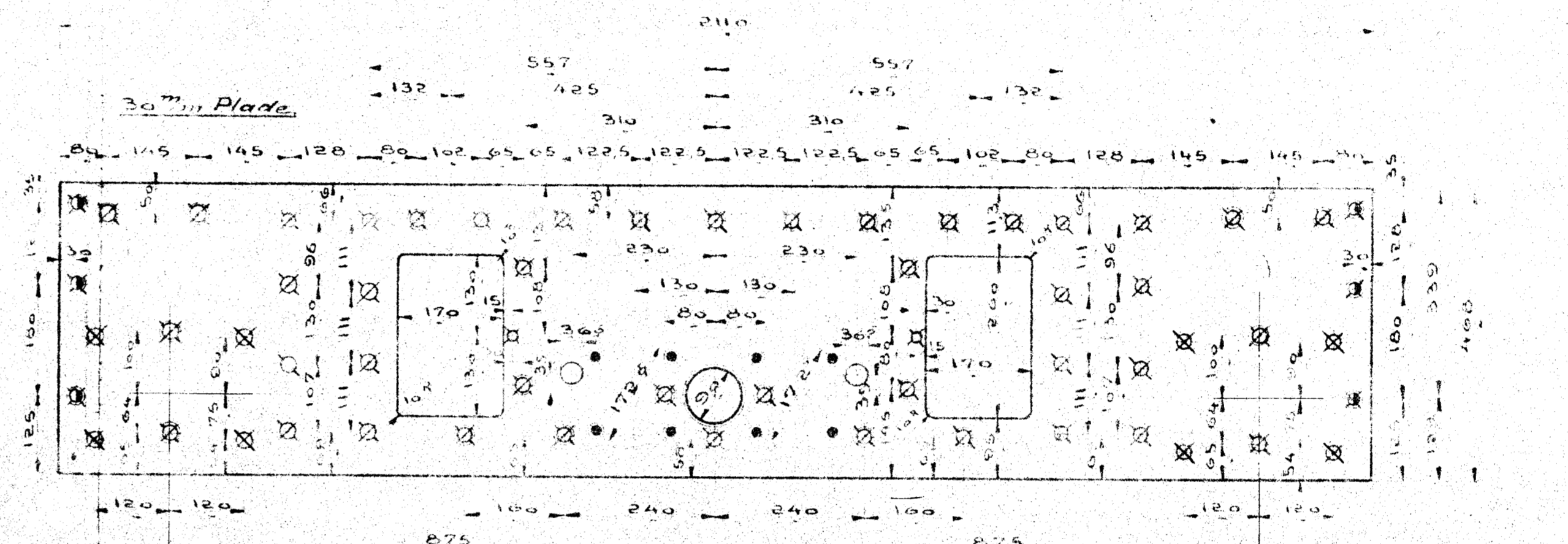


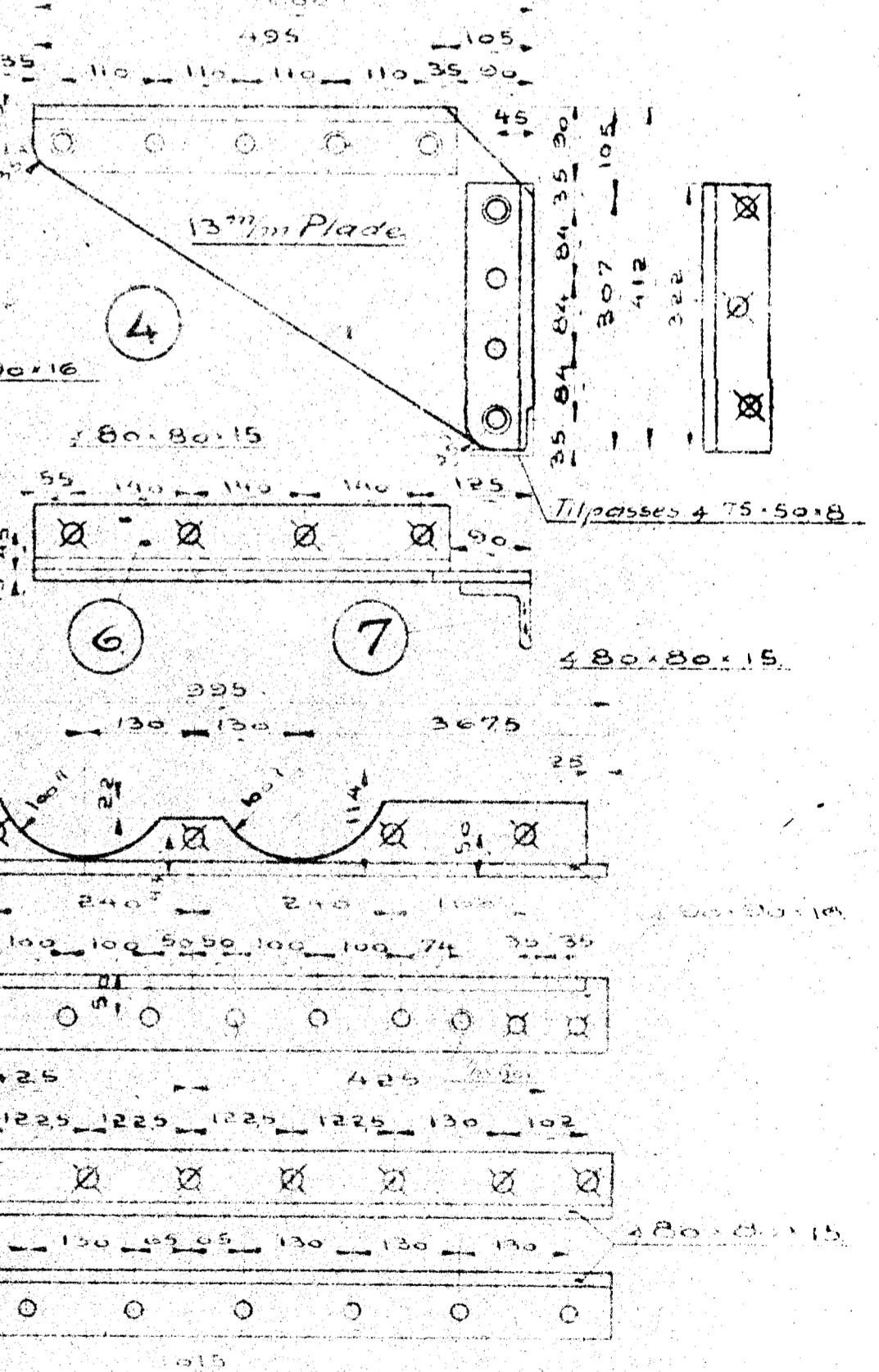
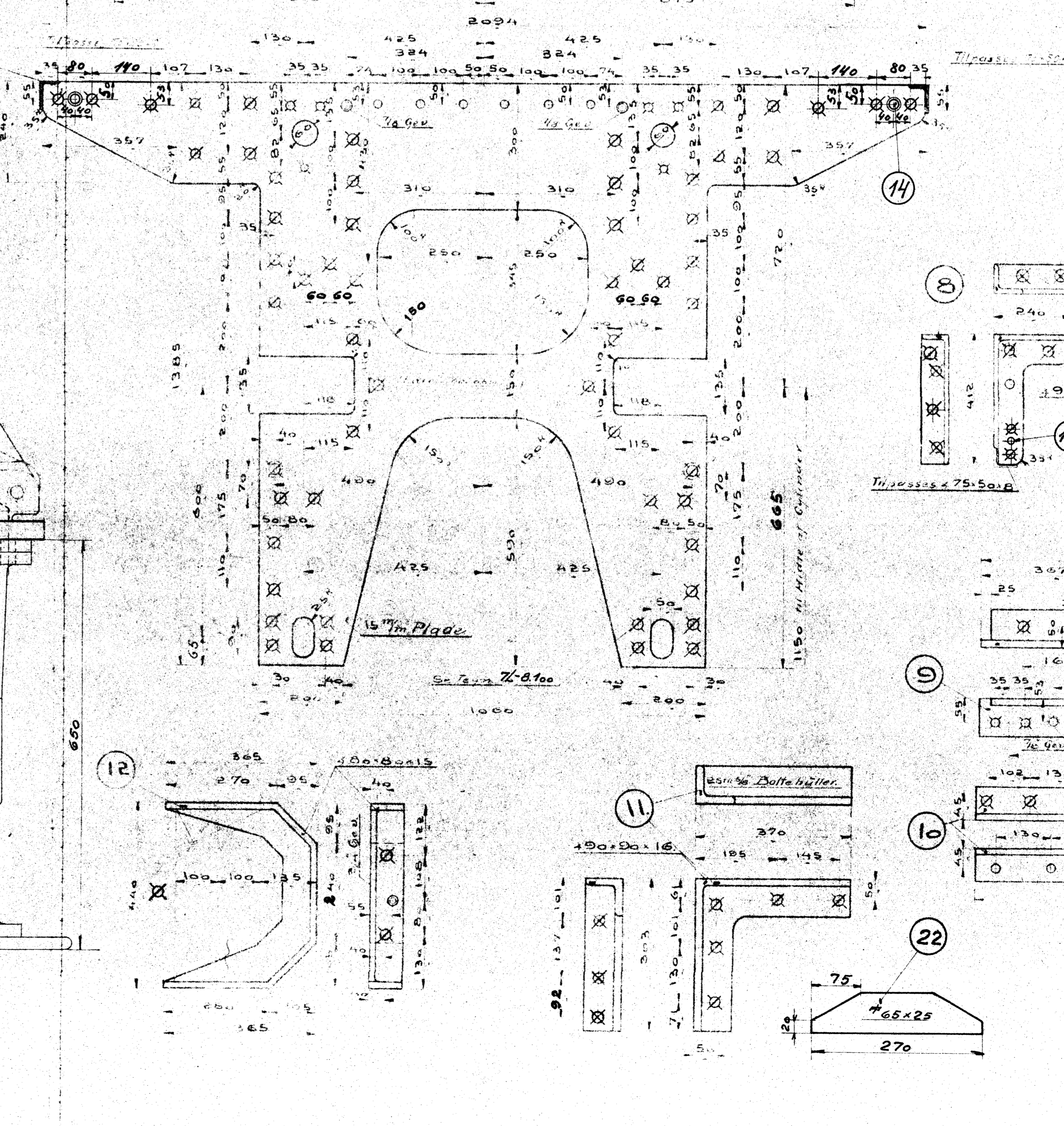
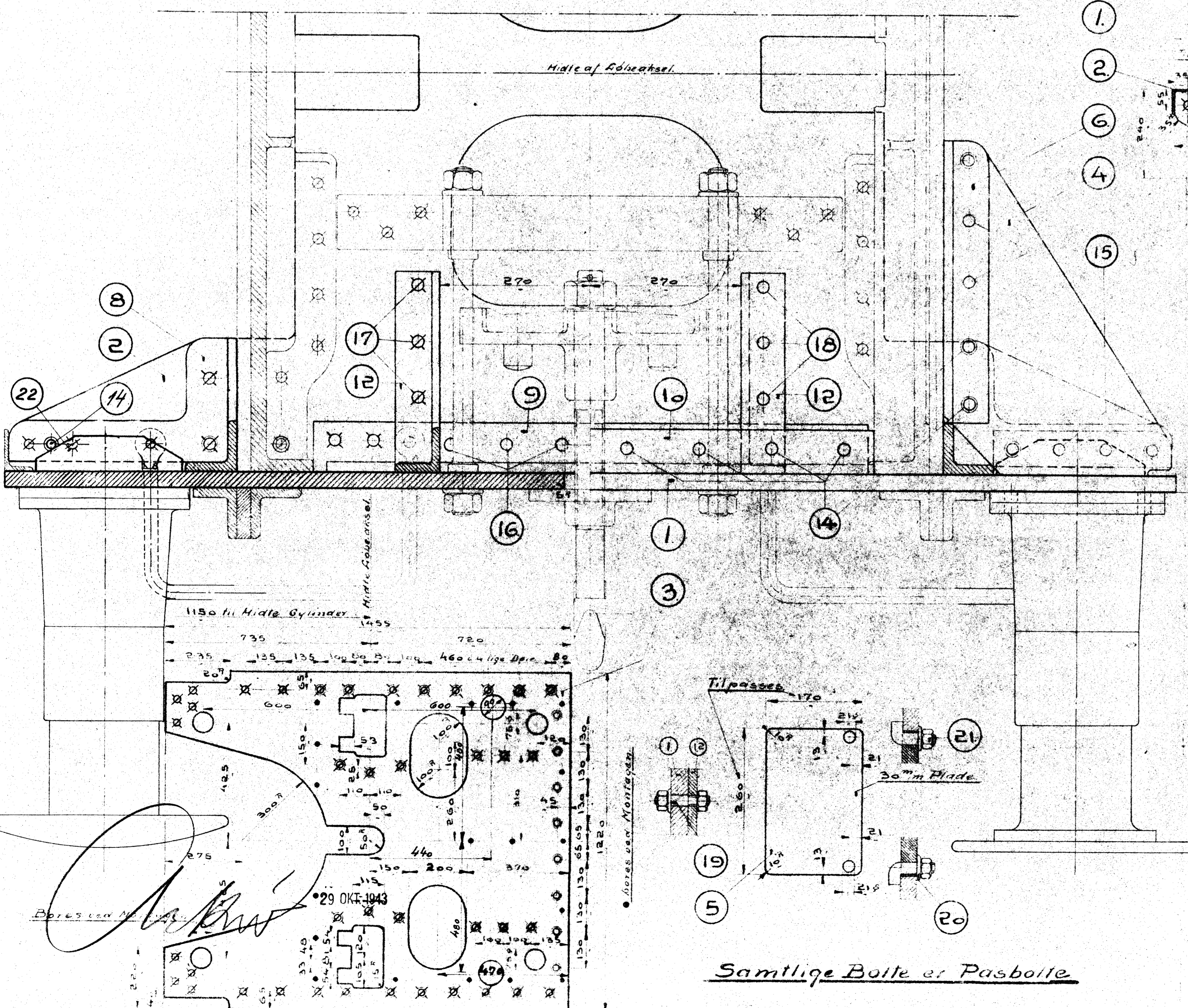
77548

1	Forreste Pufferplante	1	Fluss	220x400x30
1	Nederste Trærafslivning	2	"	210x140x15
1	Øverste do	3	"	140x120x13
2	Hjørneafslivning	4	"	600x50x13
2	Pasplade	5	"	370x270x30
2	Lige Vinkel 1" vinkel	6	"	100x80x15
2	do 1 1/2" vinkel	7	"	100x80x15
2	Bøjel Vinkel 1" vinkel	8	"	100x80x15
1	Lige Vinkel	9	"	100x80x15
1	do	10	"	100x80x15
2	Bøjel Vinkel 1 1/2" vinkel	11	"	100x80x15
2	Vinkelafslivning 1" vinkel	12	"	100x80x15
26	Bolt 7/8x70	13	Se Teg. 7L	29950
20	Nagle 3/4x48	14	Nille	Best.
8	do 3/4x58	15	"	"
6	do 3/4x62	16	"	"
6	Bolt 7/8x54	17	Se Teg. 7L	29952
6	do 7/8x52	18	"	7L 29950
2	Tap 3/4x92	19	"	7L 29965
6	Skive 2 1/2x45	20	Fluss	45x45
4	Hagebolt 3/4"	21	Se Teg. 7L	29932
2	Ribbe	22	Fluss	65x25x550



Borelabel

Bolte	Nagler
Inch	Inch
⊗ 1"	⊗ 1"
⊗ 7/8"	⊗ 7/8"
⊗ 3/4"	⊗ 3/4"
⊗ 5/8"	⊗ 5/8"
⊗ 1/2"	⊗ 1/2"
⊙ Forsøket paa Forsiden	
⊙ Forsøket paa Bagsiden	



Samtlige Bolte er Pasbolte

de danske Statsbaner  
Maskinafdelingen  
Forreste Pufferplante  
med Afslivninger  
H. 68h