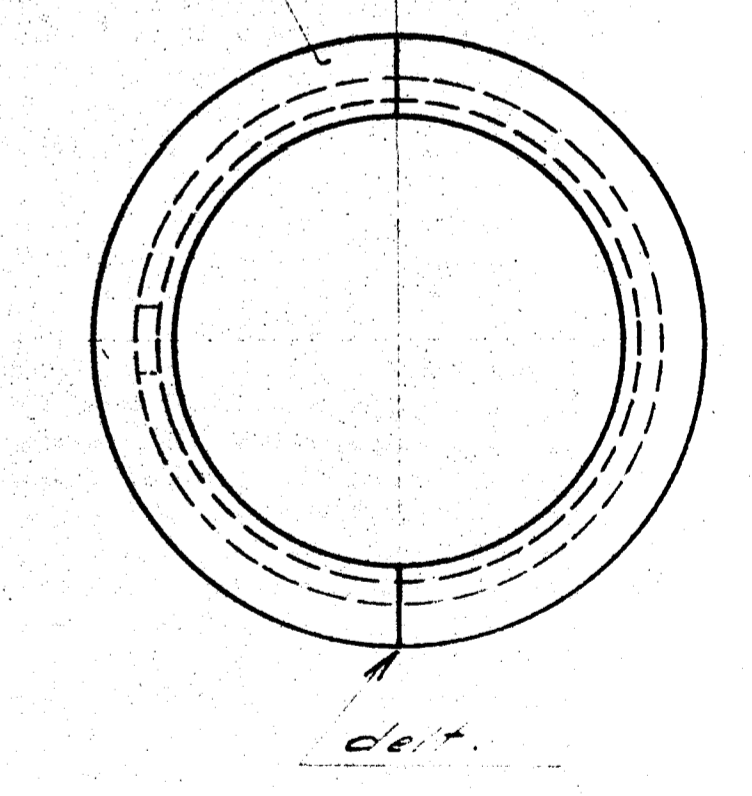
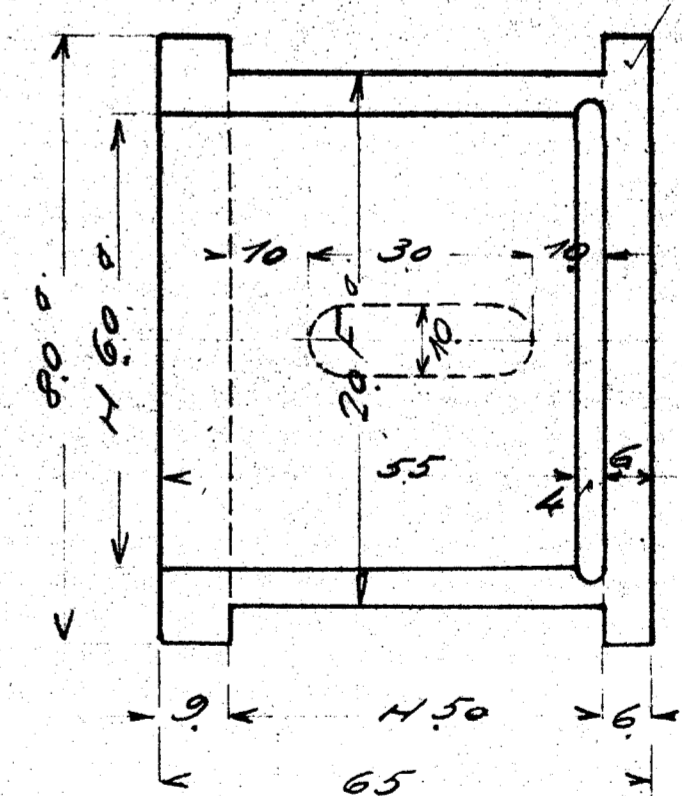
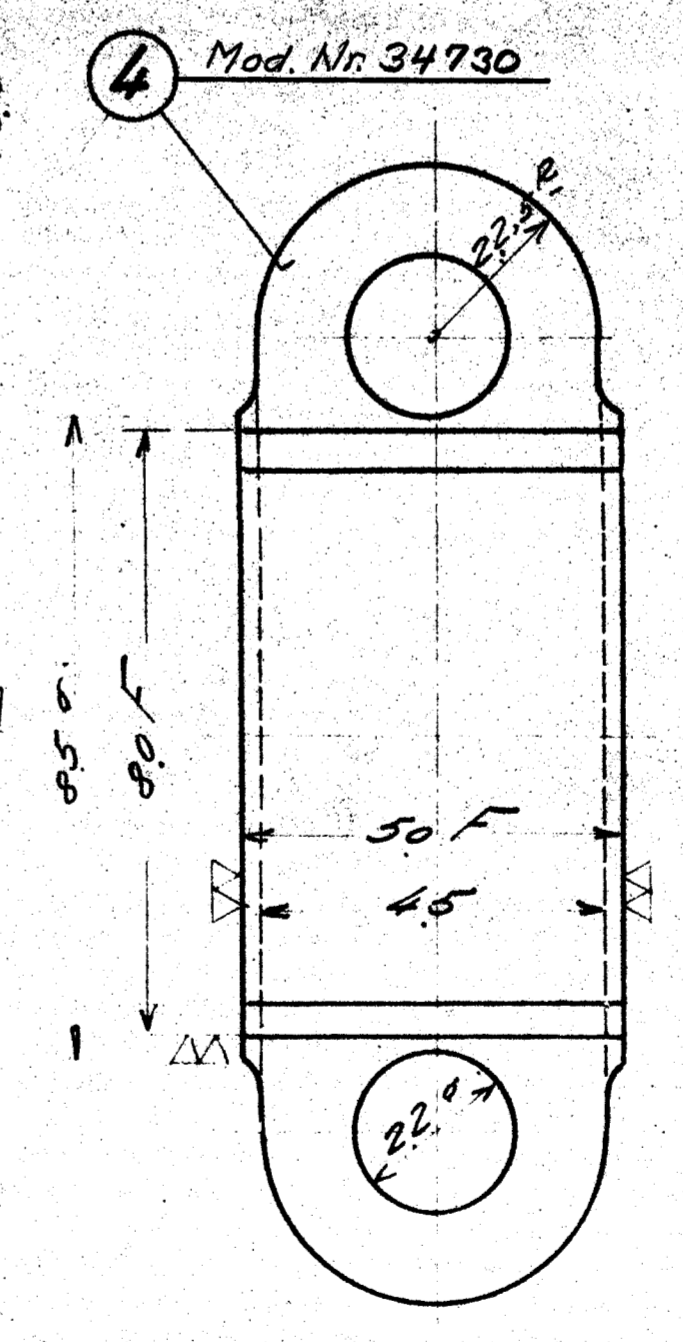
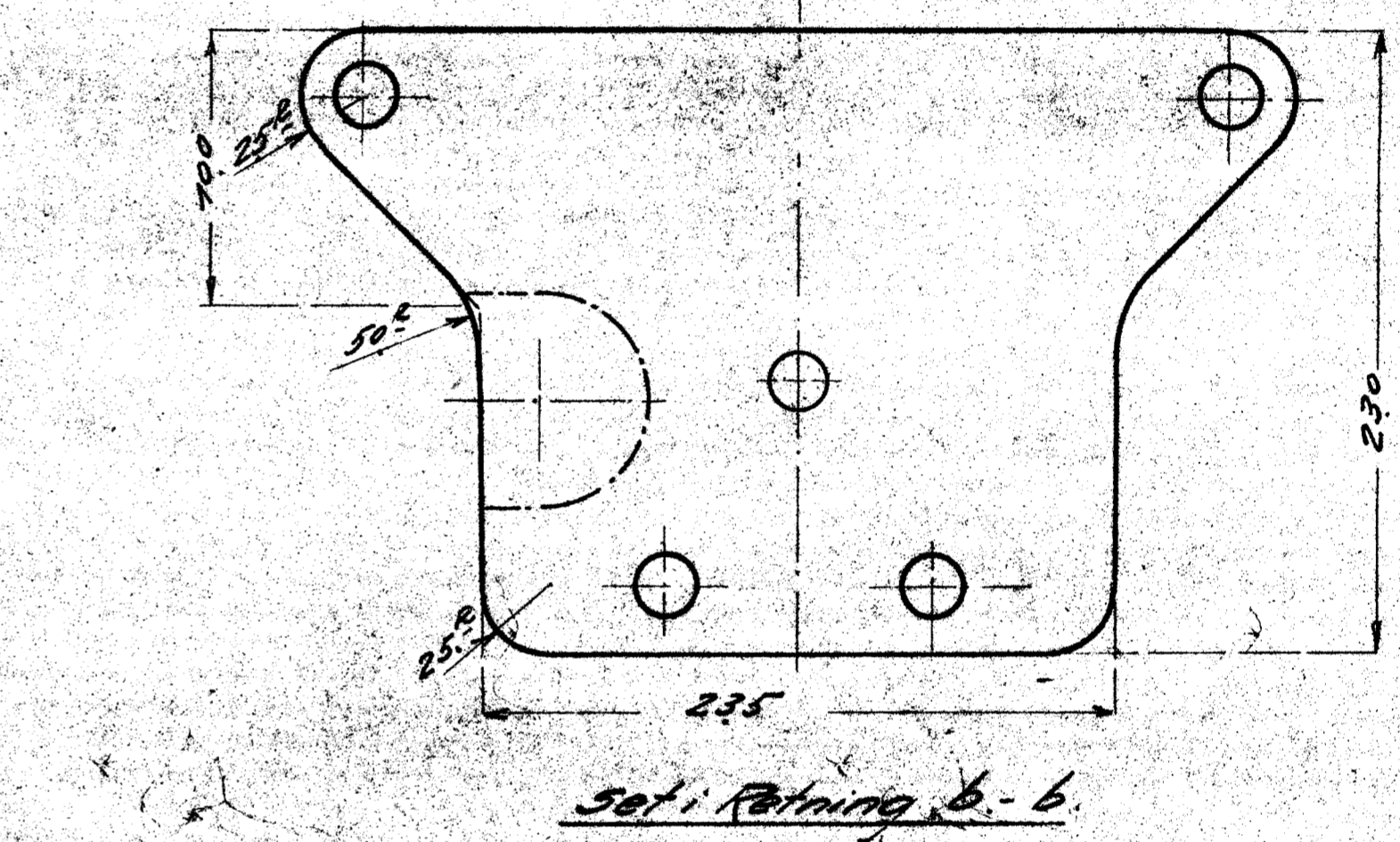
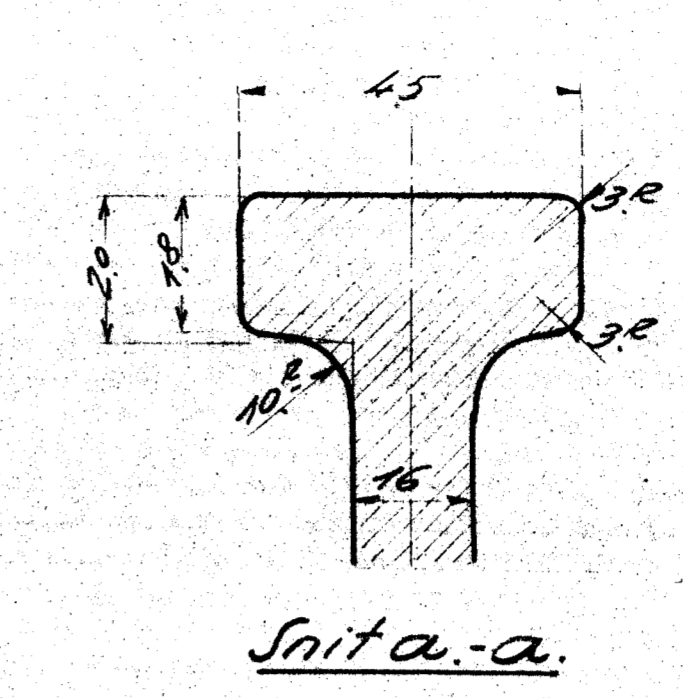
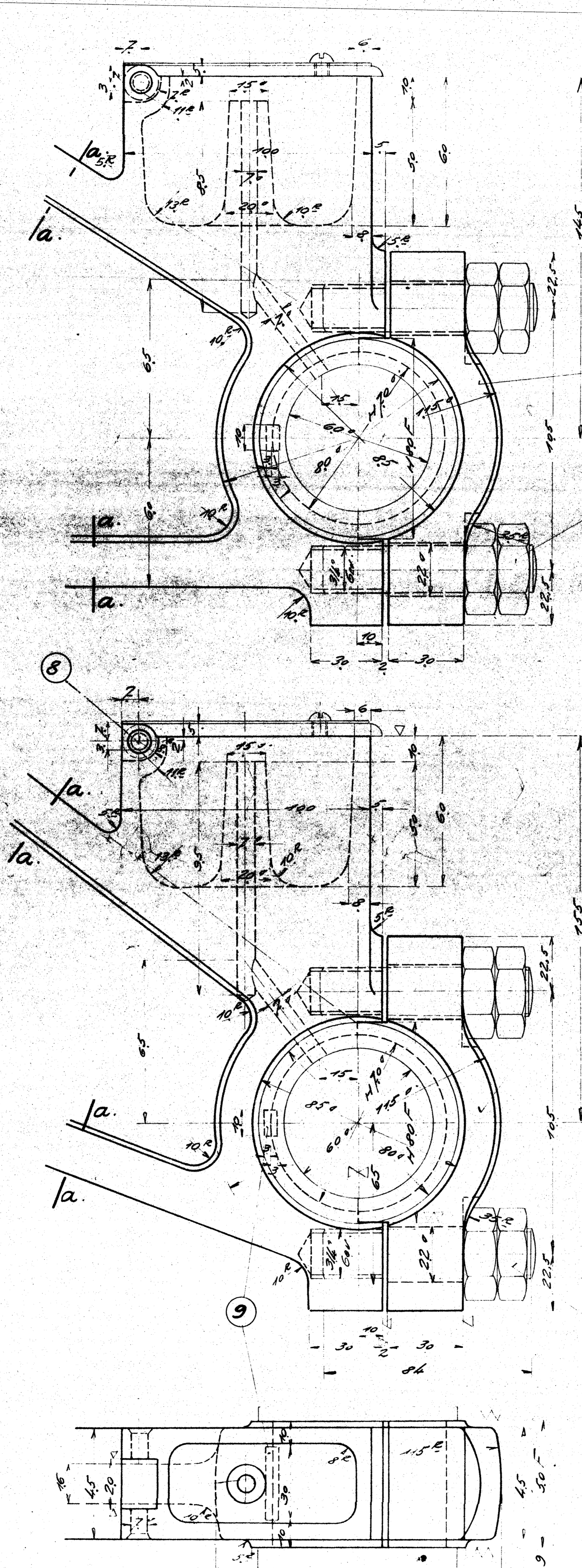


[Signature]
25 SEP. 1943



77763

| GENSTAND | ANM. | MÅL | PRIS |
|----------------------|------|--------|--------|
| 1 Leje - Højre | 1 | 21.290 | 21.290 |
| 1 do - Venstre | 2 | 21.290 | 21.290 |
| 1 do - Midterste | 3 | 21.290 | 21.290 |
| 6 Lejedalskøl | 4 | 21.290 | 21.290 |
| 6 Lejepanda 1 2/2 | 5 | 21.290 | 21.290 |
| 6 Smøredalskøl | 6 | 21.290 | 21.290 |
| 6 Feder | 7 | 21.290 | 21.290 |
| 6 Pjilt | 8 | 21.290 | 21.290 |
| 6 Koder 10-6-30 | 9 | 21.290 | 21.290 |
| 12 Skrue 1/4" x 7/8" | 10 | 21.290 | 21.290 |
| 12 Top 3/4" x 84" | 11 | 21.290 | 21.290 |
| 7 Ribolt 1/2" x 7/8" | 12 | 21.290 | 21.290 |
| 5 do 1/2" x 7/8" | 13 | 21.290 | 21.290 |
| 6 Smørevæge | 14 | 21.290 | 21.290 |

| | | | |
|---------------------------|--|----------------|--|
| a. Bølle skruet 22142 4.5 | | 1/2 Frichs | |
| Do danske Statsbaner | | Nr. 76-21.290a | |
| Maskinmesterskabet | | Dato | |
| Lejer for Kvasranter | | H. 61b. | |
| 1.2.34. Smørevæge | | a | |