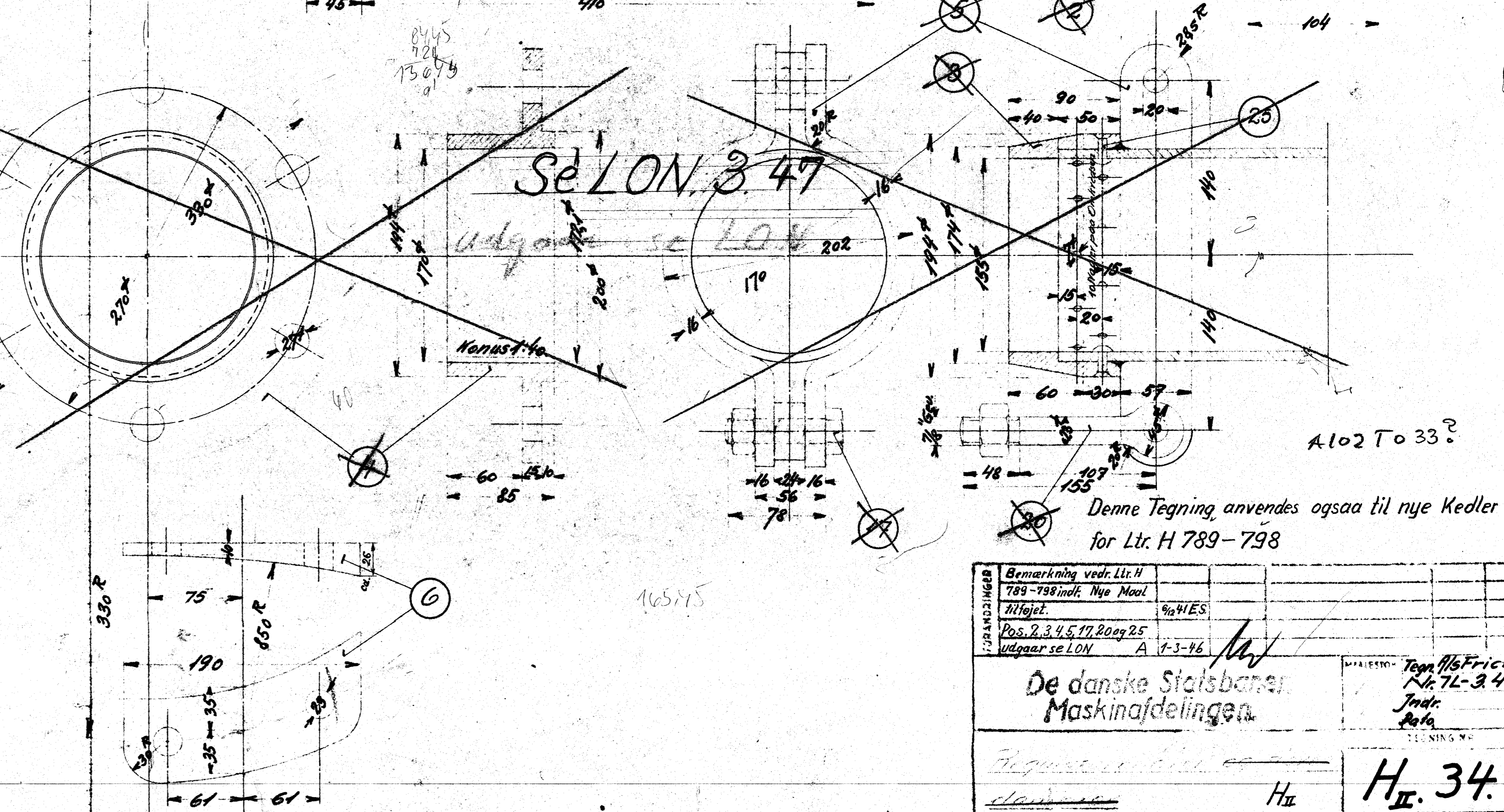
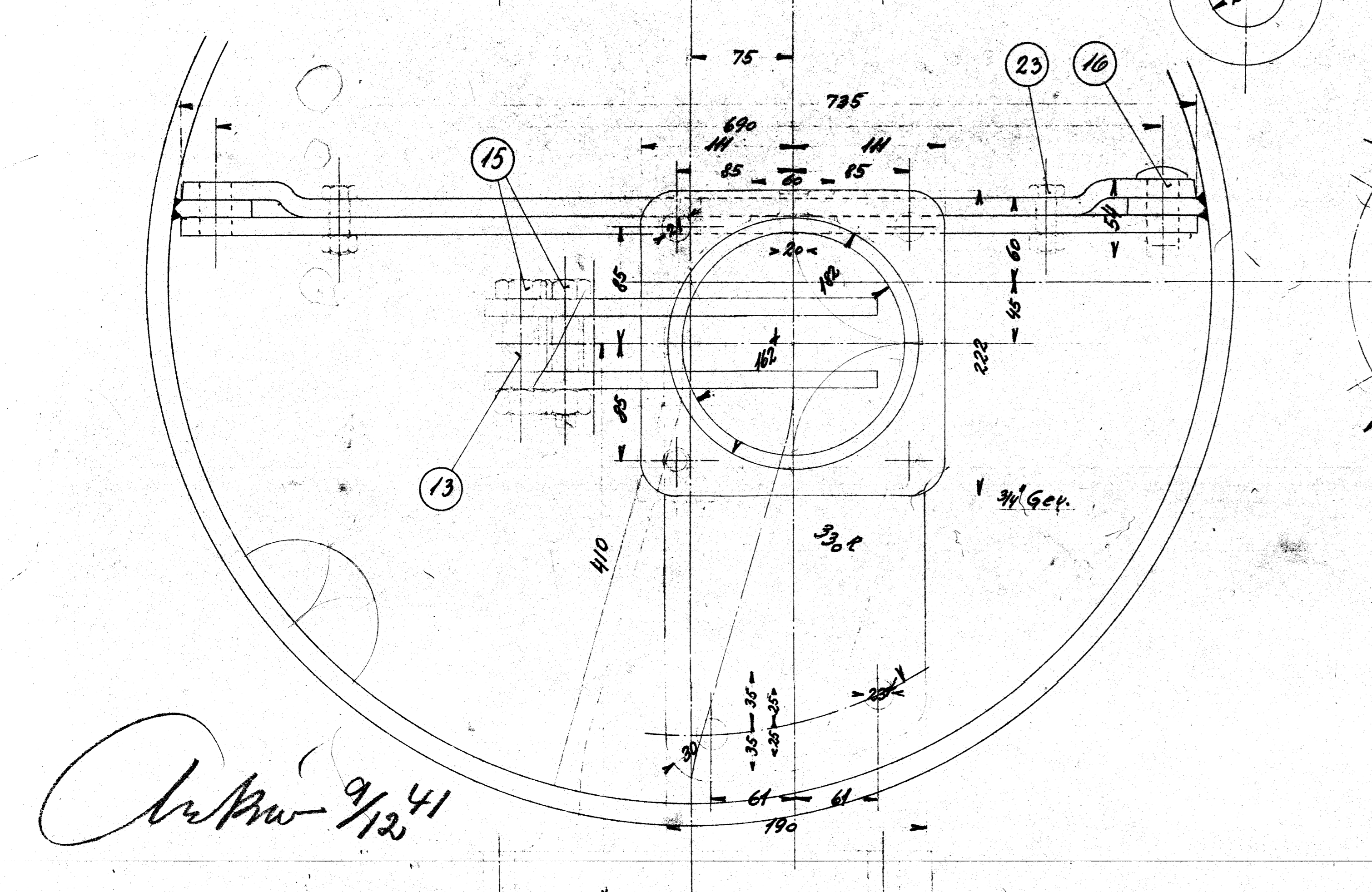
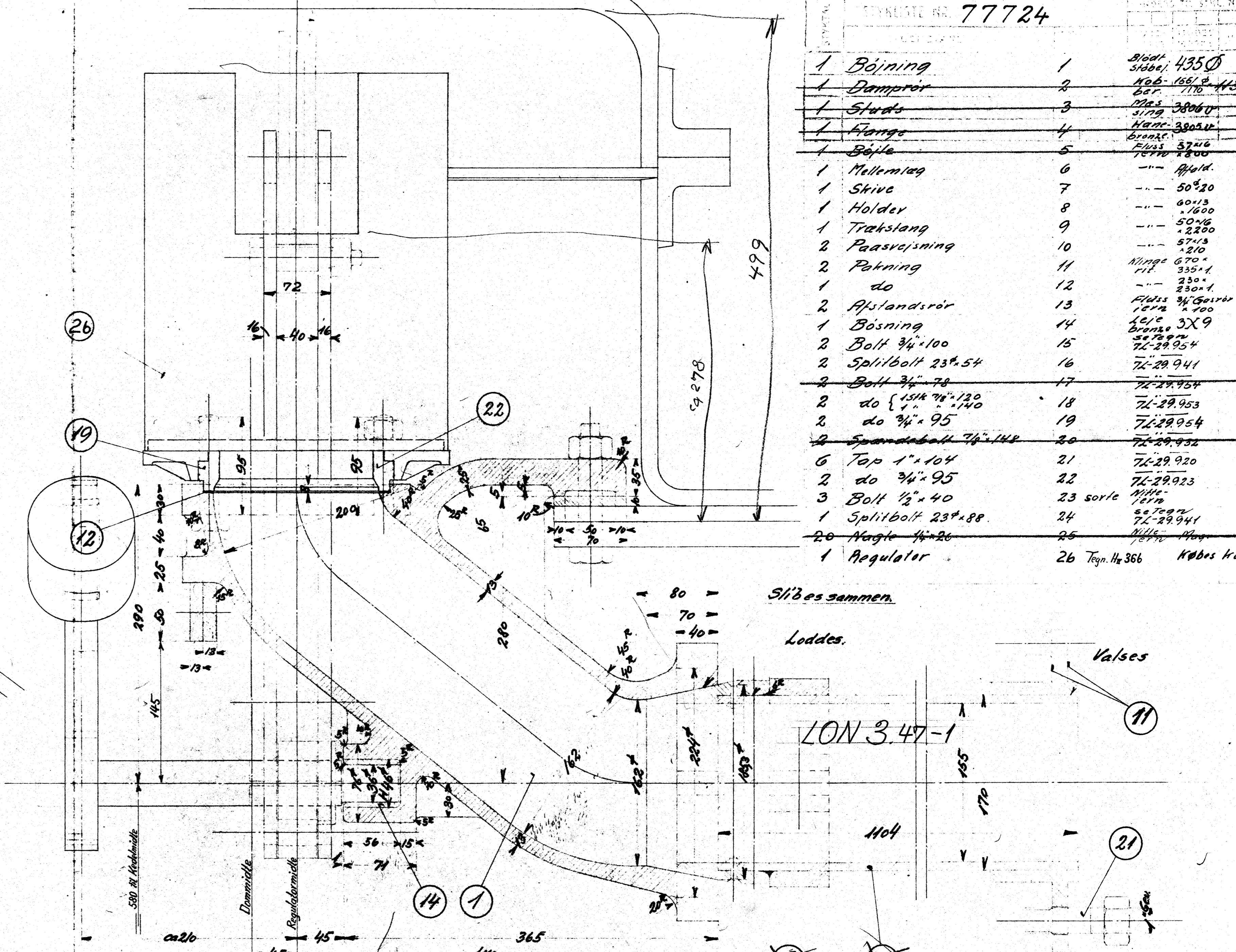
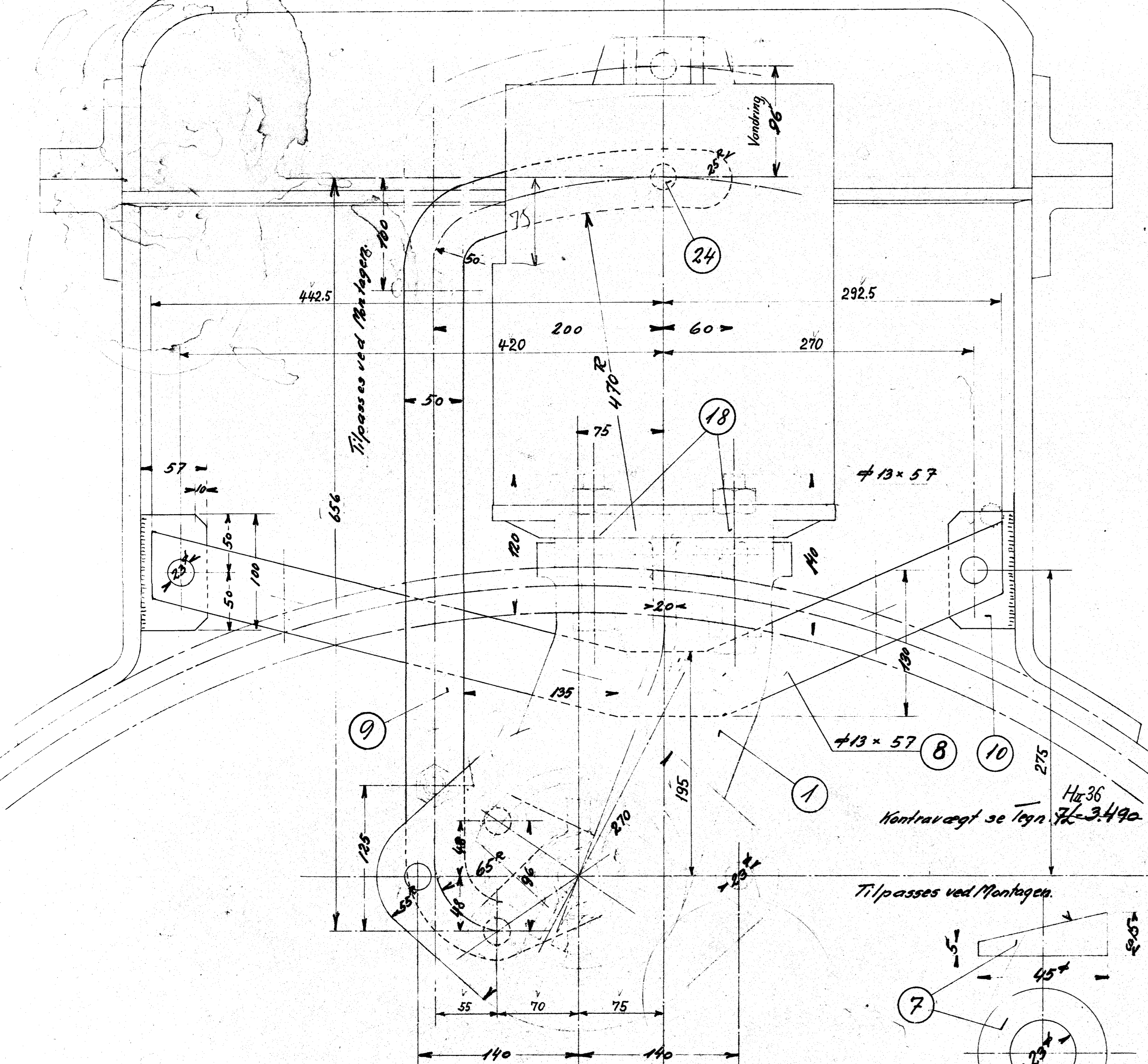


1 Bøining	1	Bolt 4350
1 Dæmper	2	Køb. 1612 1130
1 Stude	3	657 770
1 Flange	4	1179 380617
1 Bøjle	5	Køb. 380517
1 Møllelag	6	1770 2800
1 Skive	7	---
1 Holder	8	---
1 Trakstang	9	---
2 Pærvejning	10	---
2 Pakning	11	---
1 do	12	---
2 Afstandsror	13	---
1 Bøsning	14	---
2 Bolt 3/4" 100	15	---
2 Splitbolt 23x54	16	---
2 Bolt 3/4" 78	17	---
2 do 15/16" 130	18	---
2 do 3/4" 95	19	---
2 Spændebolt 7/8" 118	20	---
6 Top 1" 104	21	---
2 do 3/4" 95	22	---
3 Bolt 1/2" 40	23	---
1 Splitbolt 23x88	24	---
20 Nøgle 1/4" 26	25	---
1 Regulator	26	---



Handwritten signature and date: 9/12 41

Denne Tegning anvendes ogsaa til nye Kedler for Ltr. H 789-798

Bemærkning vedr. Ltr. H 789-798 msk. nye Model	
Målest. 1:1	94415
Pos. 2, 3, 4, 5, 17, 20 og 25 udgaa se LON A 1-3-16	
De danske Statsbaner Maskinafdelingen	
Tegning af Hr. 34	