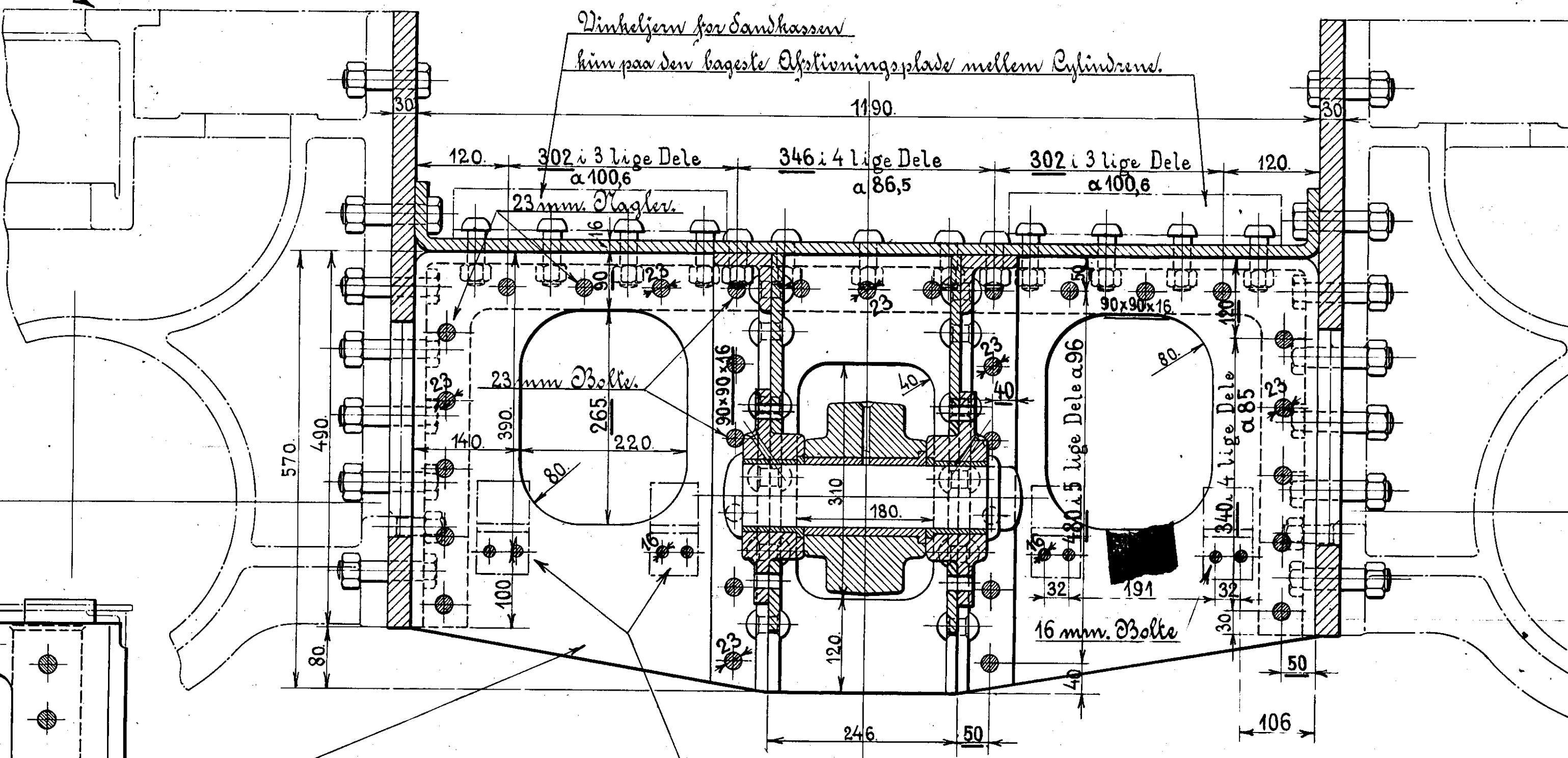
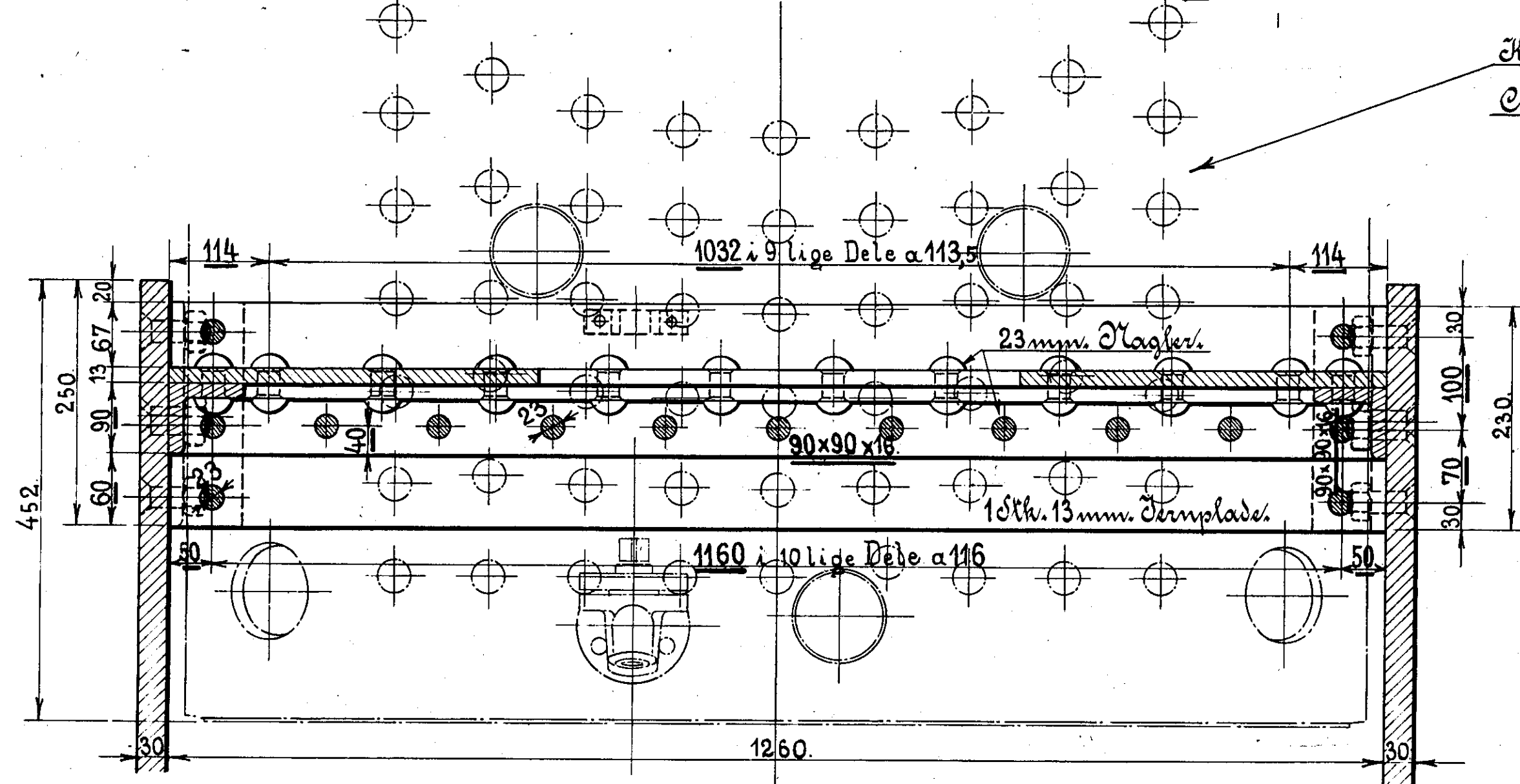
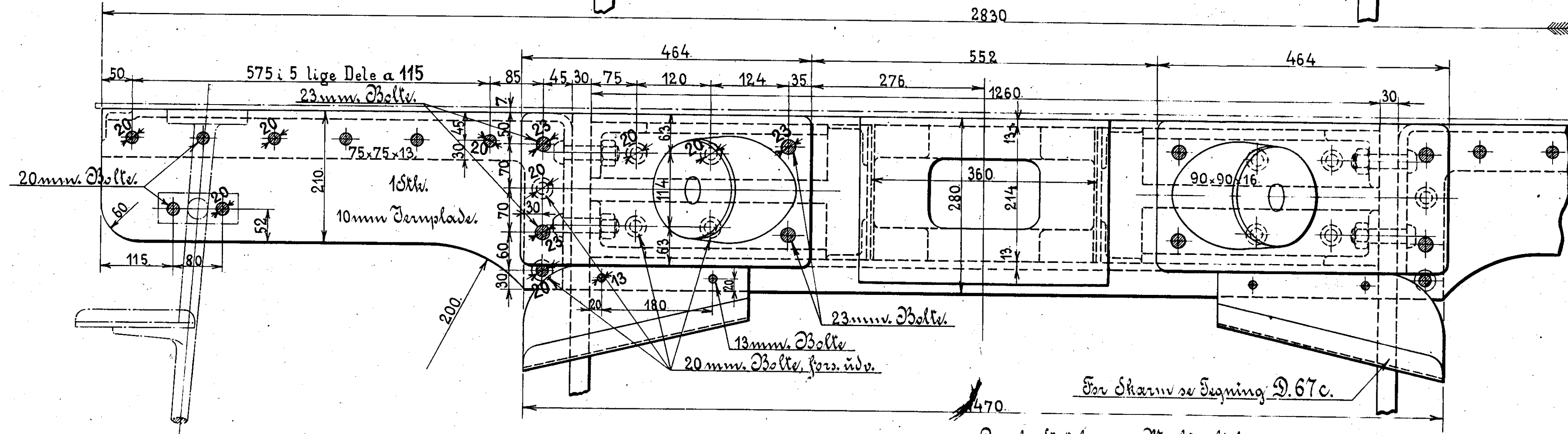
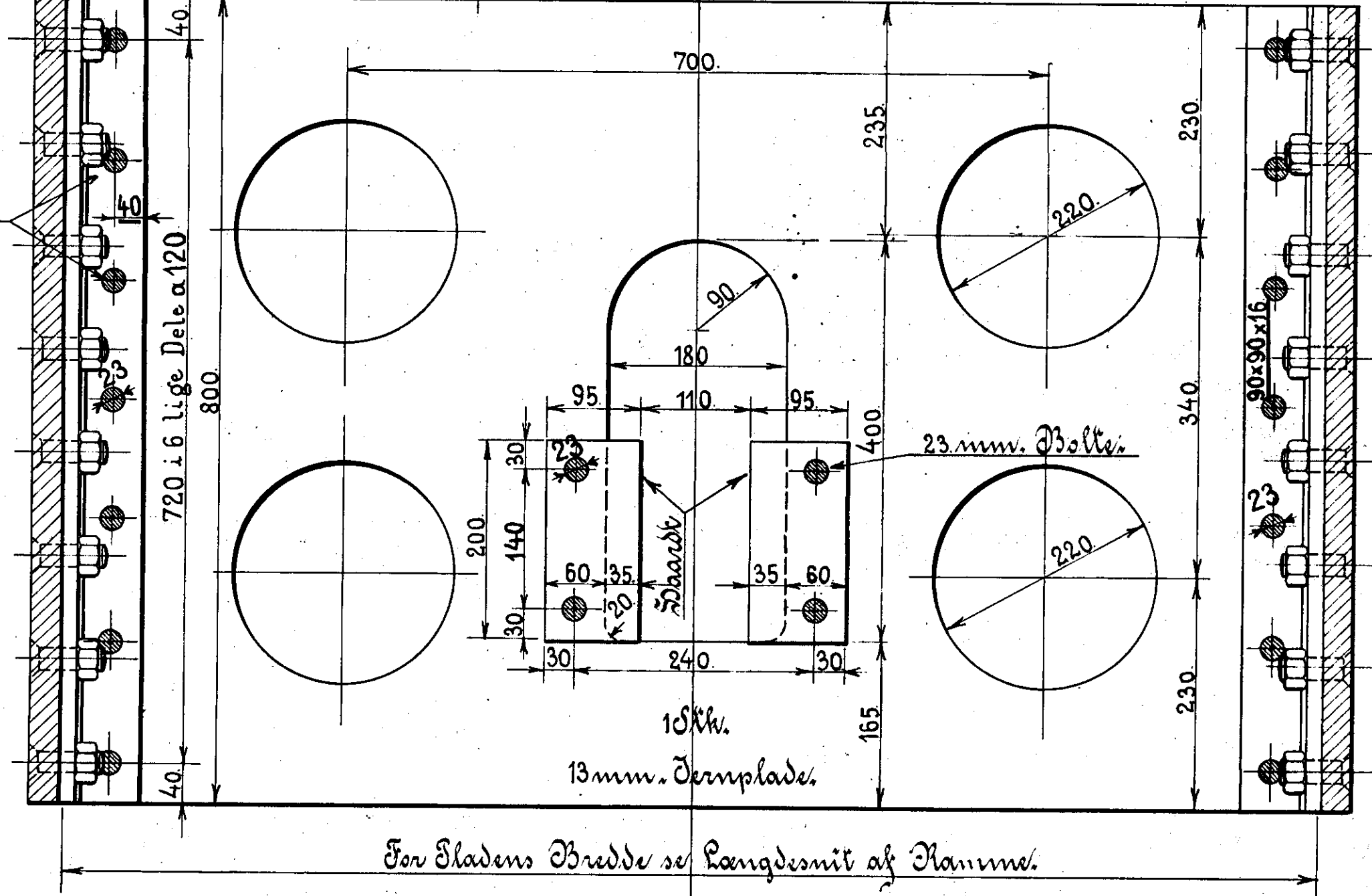
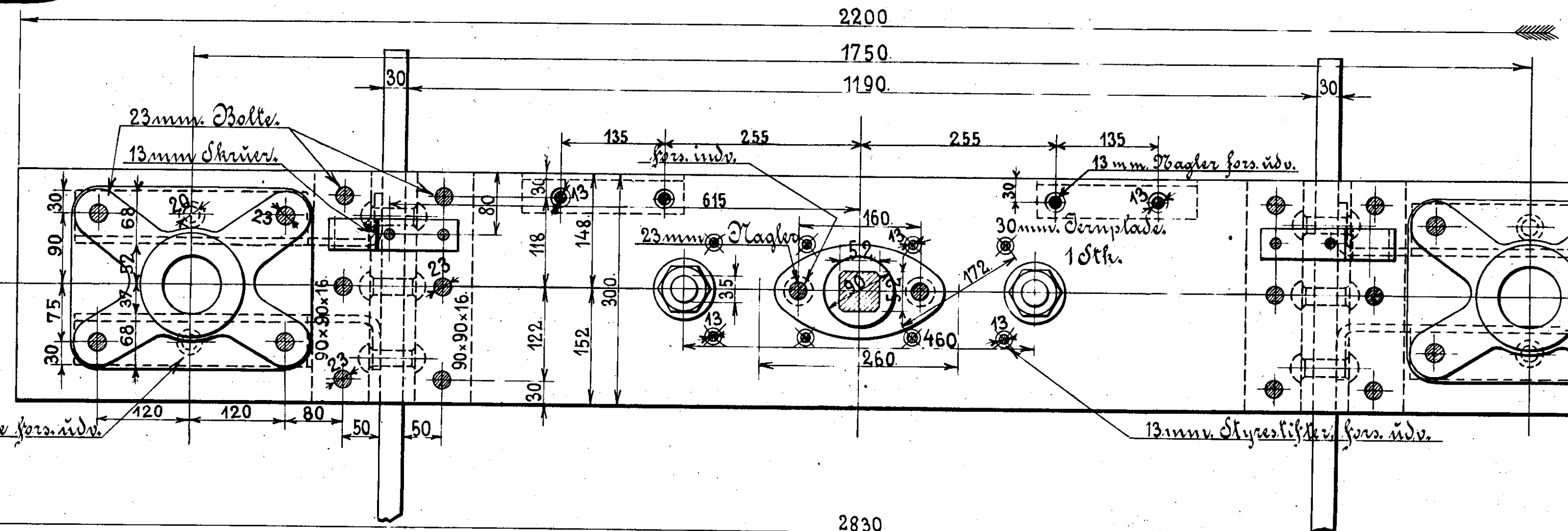
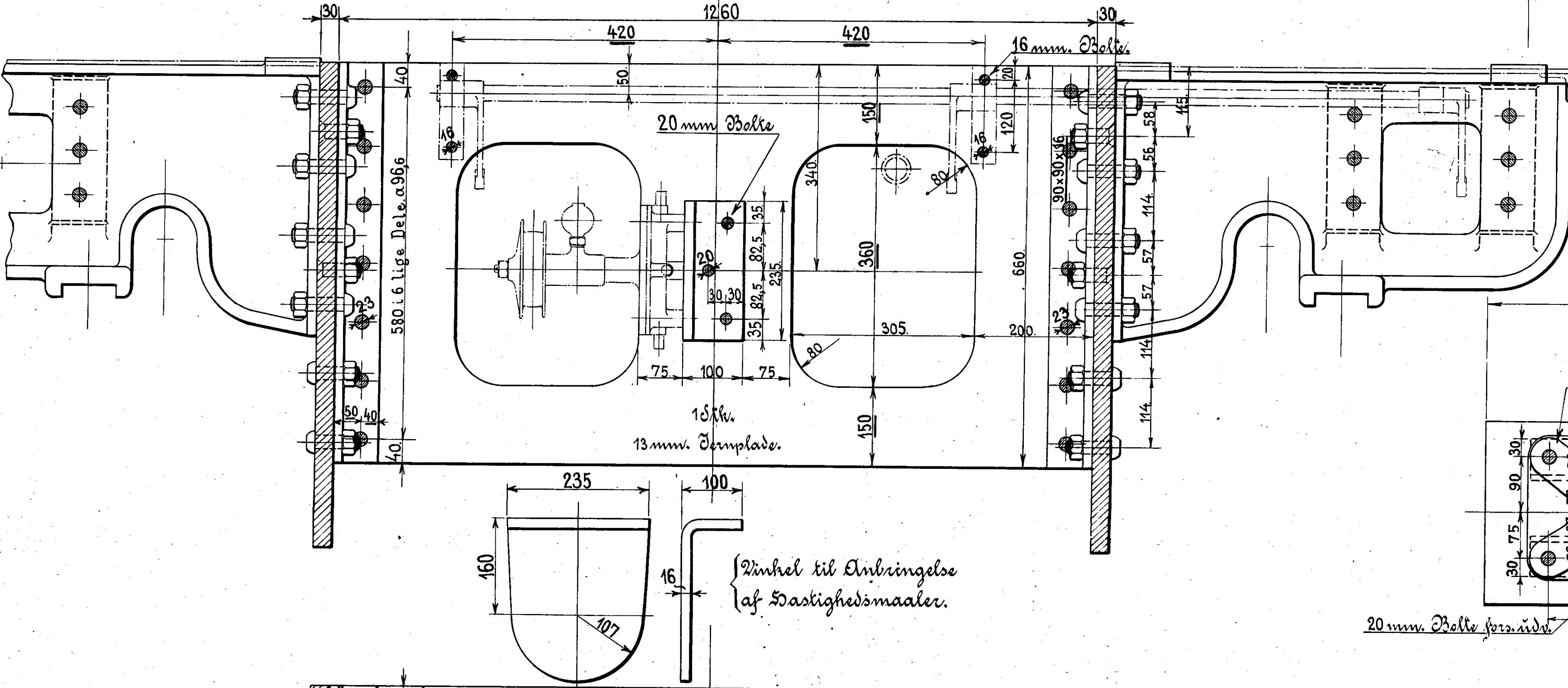


Hælden gælder kun for I, II  
Cylinderen " " " " " D.



1stk. 13mm. Tæmplate med Huller for Sandkassens Anbringelse, som tegnet  
" " " " " " " " " " "



For Sladens Bredde se Længdesnit af Kamme.

Danske Statsbaner - Maskinfabrikken

Tværsnit af Kamme  
til  
Loko: Rita D, II, III.

D. 67c  
Rev. 2/2 1909  
2/11

1:5 sand Skjærelse.