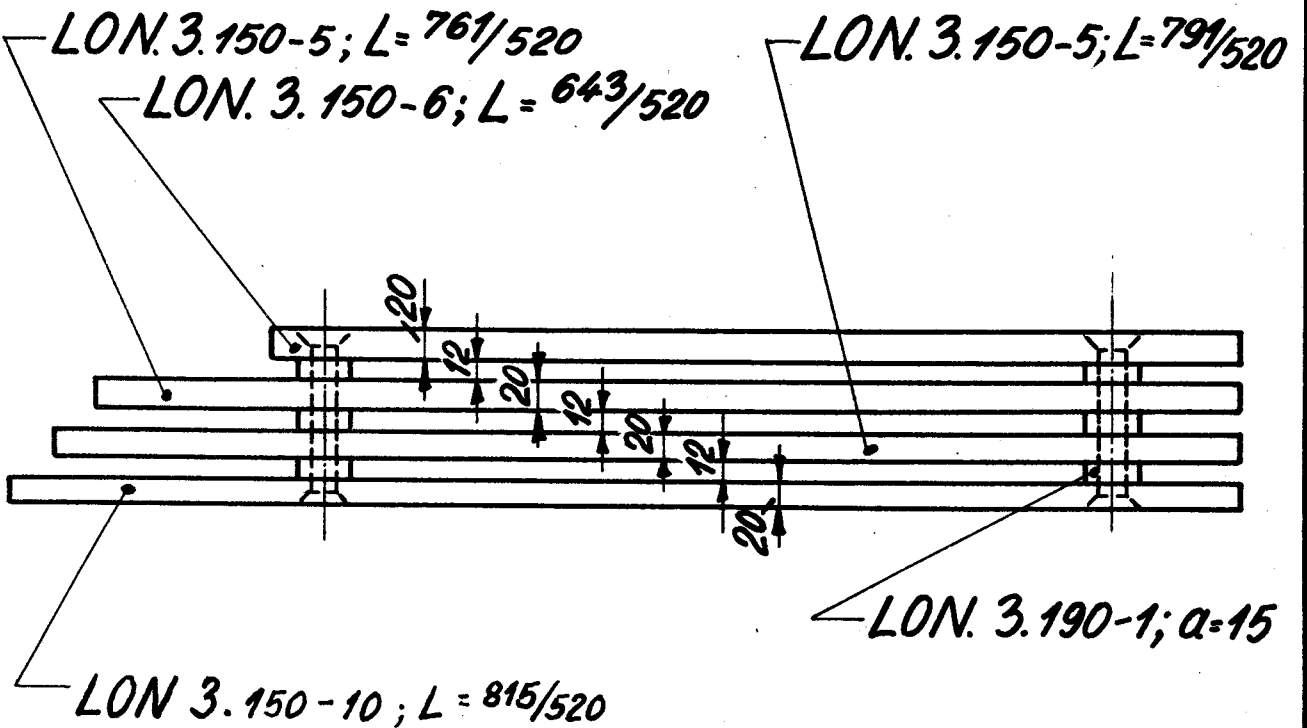
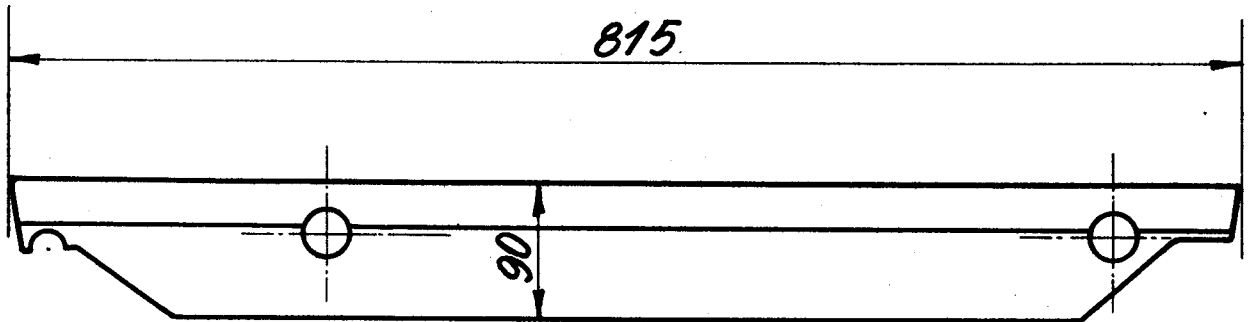


0

LON.
D.S.B.Bagsiderist for loko. litra P_I, P_{II}
til støbte ristestænger

3.200-64

1949



Bageste siderist som vist
Forreste do. modsat do.

Rekvissionsbetegnelse

Materiale

Model nr.

Mindstebeholdn.

Bagsiderist LON. 3.200-64

Forrest
del. bop

Flussjern

Kh.

Ar.

5

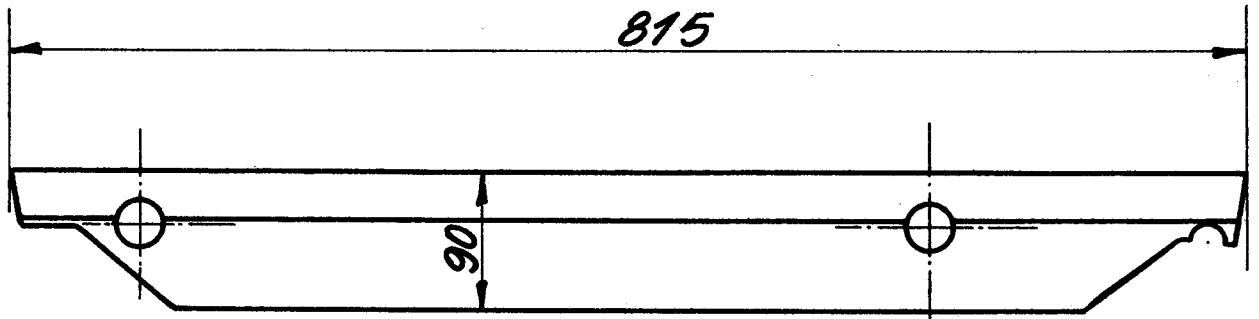
0

LON.
D.S.B.

Bagsiderist for loko litra P_I, P_{II}
til støbte ristoenger

3.200-65

1949



LON. 3.150-5; L = 791/520

LON. 3.190-1; a = 15

LON. 3.150-5; L = 761/520

LON. 3.150-6; L = 643/520



LON. 3.150-9; L = 815/520

LON. 3.190-2; a = 123.5

Bageste siderist som vist
Forreste do. modsat do.

6

Rekvissionsbetegnelse	Materiale	Model nr.	Mindstebeholdning
Bagsiderist LON. 3.200-65 <small>(formell. bog)</small>	Flussjern	.	Kh. Ar.

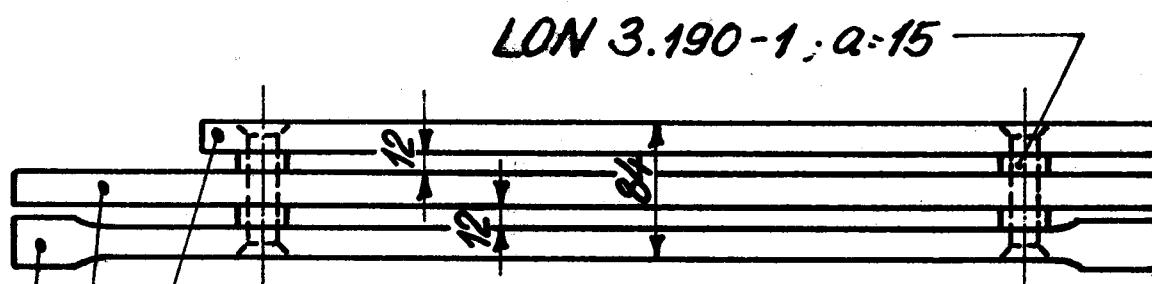
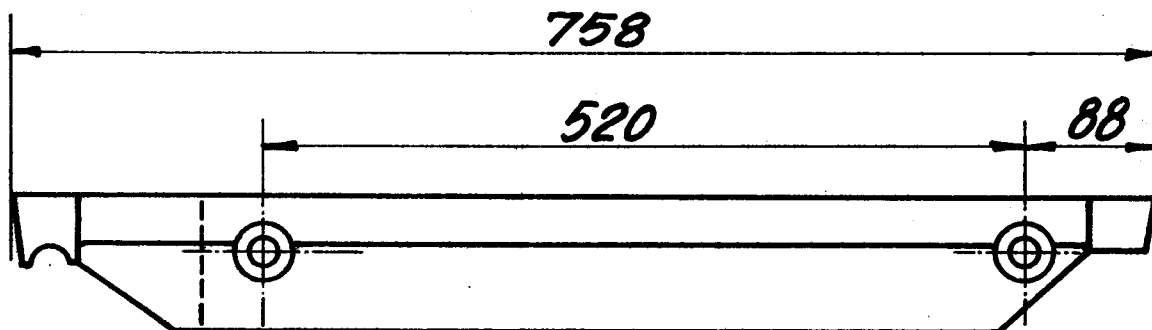
LON.
D.S.B.

Bagsiderist for loko. litra T.

3.200-67.

Kun for nittet fyrkasse

1949



LON. 3.150-6, L = 635/520

LON. 3.150-3, L = 758/520

LON. 3.150-2, L = 758/520

Venstre bagsiderist som vist.
Højre do. modsat

Rekvissionsbetegnelse	Materiale.	Model nr.	Mindesteholdn.
Bagsiderist, LON. 3.200-67 <small>{venstre ell. højre</small>	Flussjern		Kh. Ar.

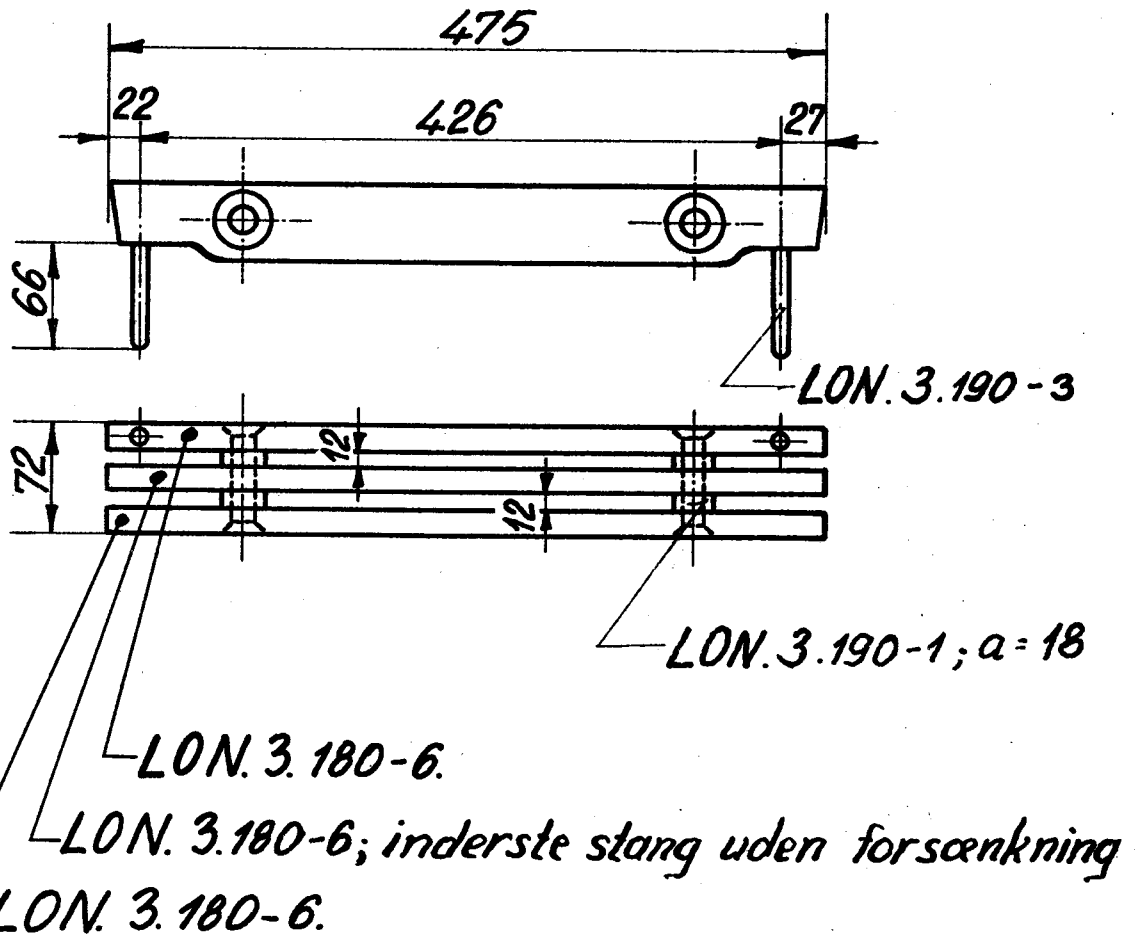
1

LON.
D.S.B.

Siderist ved vipperist
for loko. litra T.

3.200-68.

1949



Venstre siderist som vist
Højre do. modsat

Rekvissionsbetegnelse	Materiale	Model nr.	Mindstebeholdn.	
Siderist, LON. 3.200-68 <small>(venstre ell. højre)</small>	Flussjern		Kh.	Ar.

2

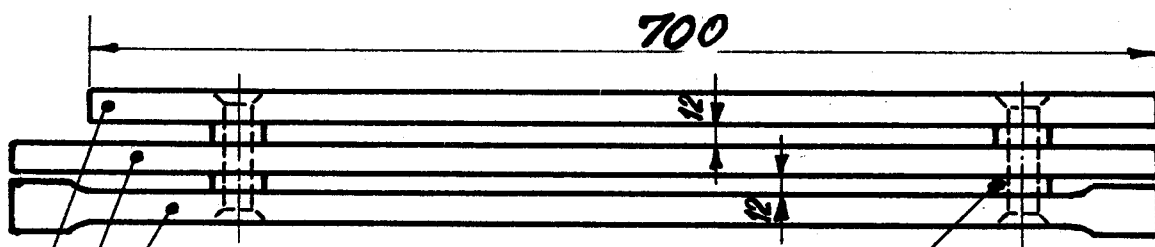
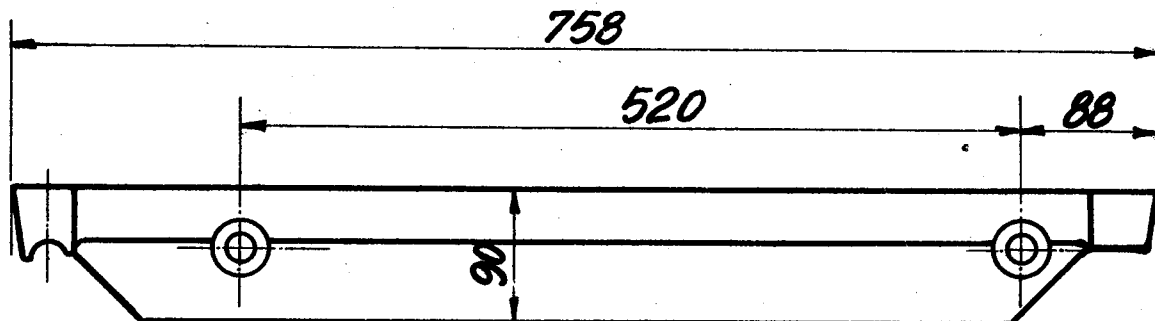
LON.
D.S.B.

Bagsiderist for loko. litra T.

3.200-69.

Kun for svejst fyrkasse

1949



- LON. 3.150-2, L=758/520.
- LON. 3.150-3, L=758/520.
- LON. 3.150-6, L=700/520.
- LON. 3.190-1, $\alpha=15$

Venstre bagsiderist som vist
Højre do modsat

Rekvissionsbetegnelse	Materiale	Model nr.	Mindstebeholdn.
Siderist, LON. 3.200-69 <small>(venstre ell. højre)</small>	Flussjern		Kh. Ar.

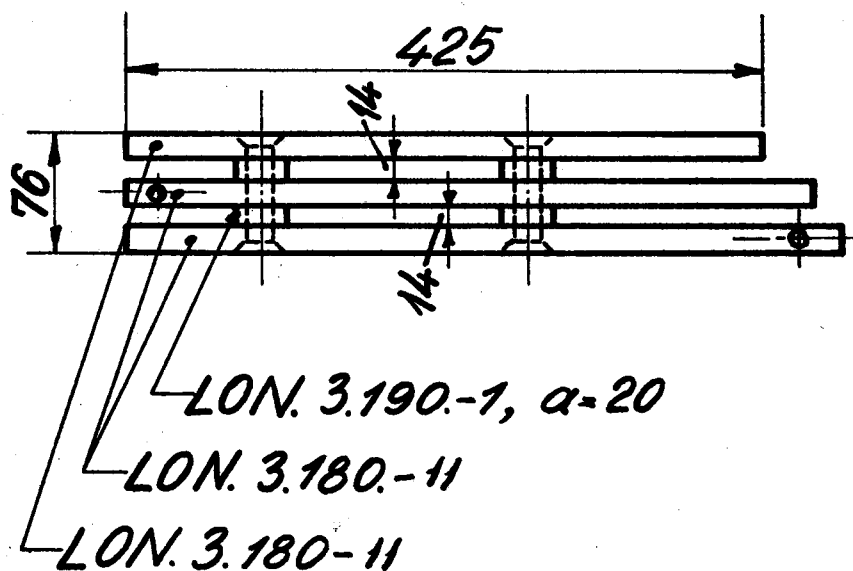
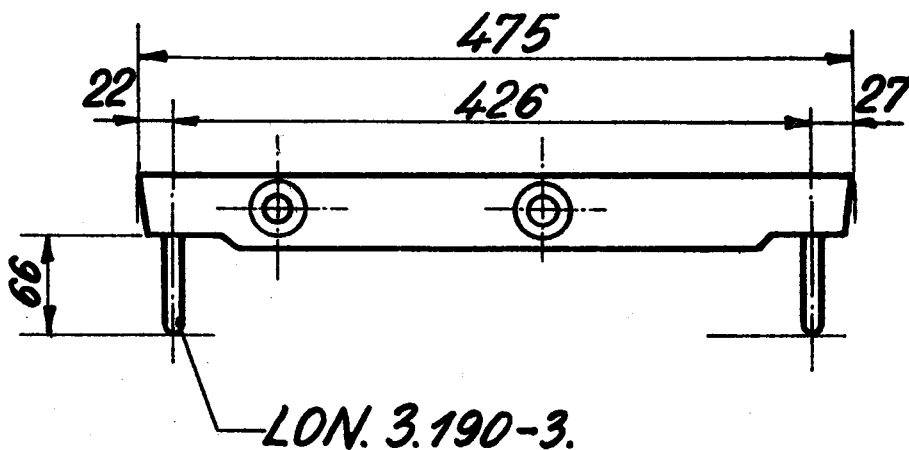
LON.
D.S.B.

Siderist ved vipperist, ydersæt,
for loko. litra T.

3.200-70.

Kun for svejst fyrkasse

1949



*Venstre siderist som vist
Højre do modsat*

Rekvissionsbetegnelse	Materiale	Model nr.	Mindstebeholdn.
Siderist, LON. 3.200-70 ^{venstre} _(ell. højre)	Flussjern		Kh Ar

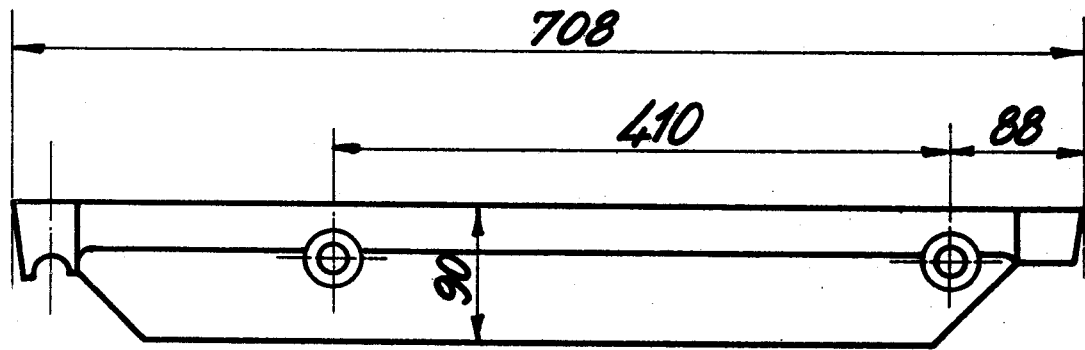
LON.
D.S.B.

Bagsiderist for loko. litra 0.

3.200-71.

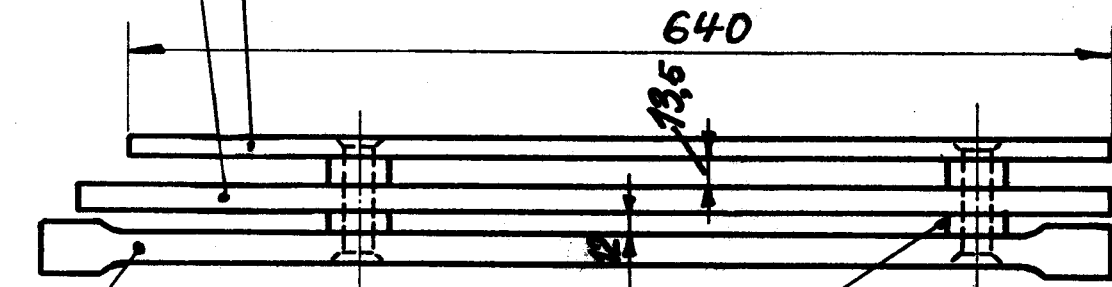
Kun for svejst fyrkasse

1949



LON. 3.150-5, L=685/410.

LON. 3.170-2, L=640/410



LON. 3.150-2, L=708/410.

LON. 3.190-1, a=15

*Venstre bagsiderist som vist
Højre do modsat*

Rekvissionsbetegnelse	Materiale	Model nr.	Mindstebeholdn.
Bagsiderist, LON. 3.200-71 <small>(Venstre eller højre)</small>	Flussjern		Kh. Ar.

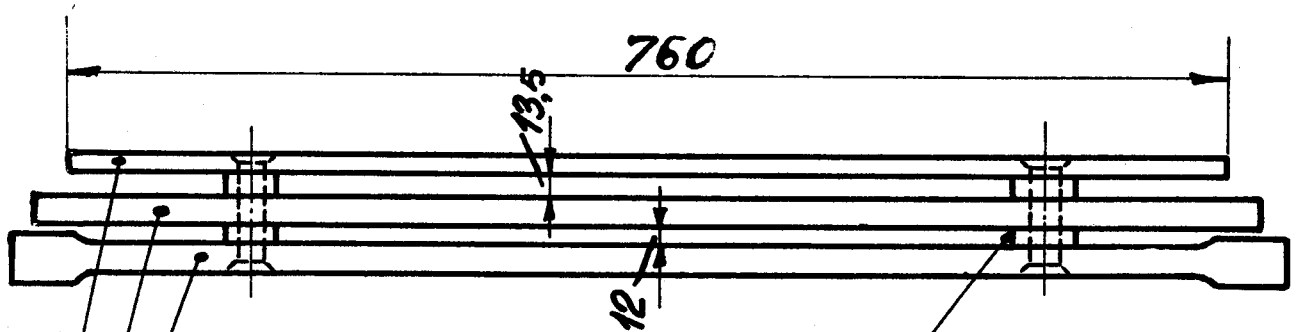
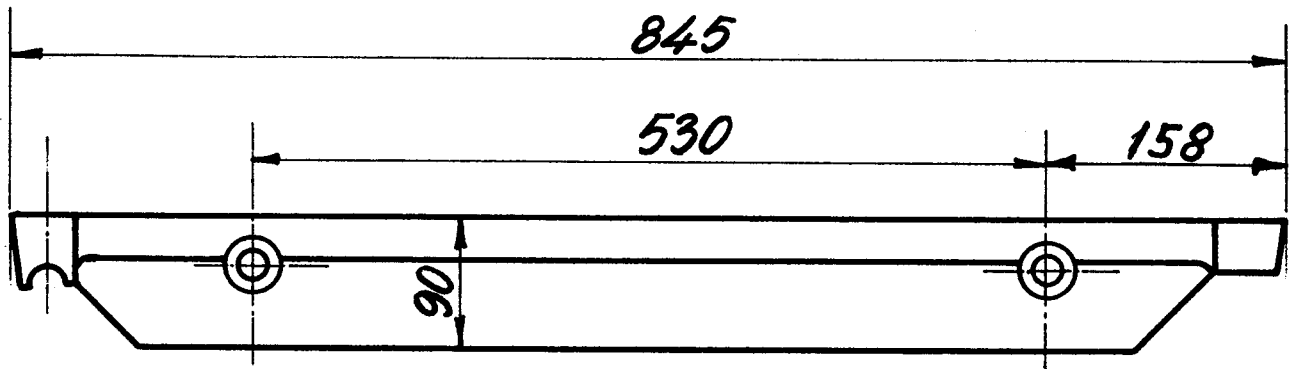
L.O.N.
D.S.B.

Siderist for loko. litra. Hs_{II}.

3.200-72.

Kun for svejst fyrkasse

1949



- LON. 3.150-2, L = 845/530.
- LON. 3.150-5, L = 808/530
- LON. 3.170-1; L = 760/530
- LON. 3.190-1, $\alpha = 15$

Rekvissionsbetegnelse	Materiale	Model nr.	Mindstebeholdn.
Siderist, LON. 3.200-72	Flussjern		Kh. Ar.

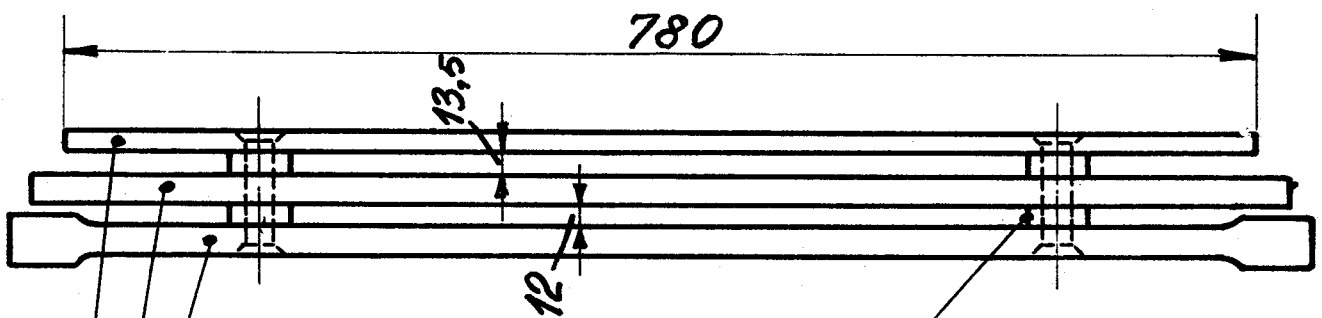
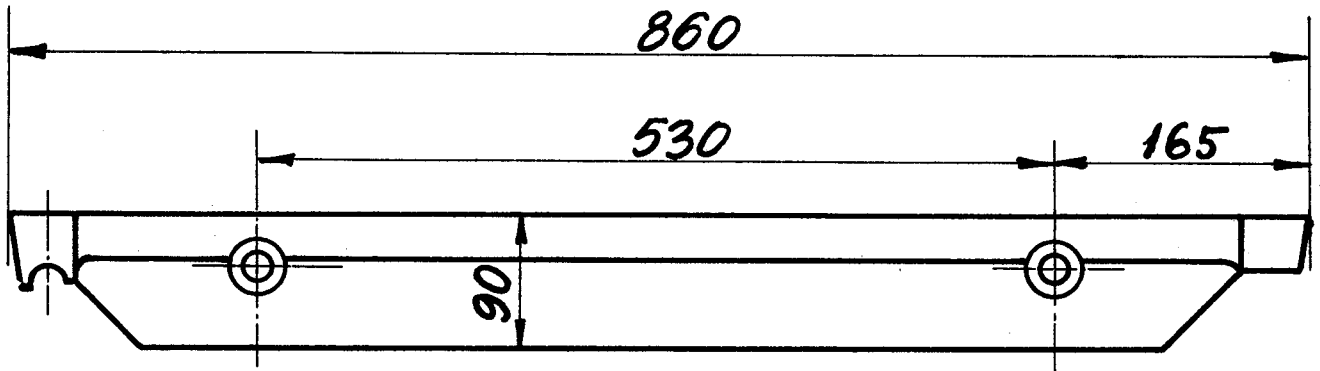
LON.
D.S.B.

Siderist for loko. litra Hsr.

3.200-73.

Kun for svejst fyrkasse

1949



LON. 3.150-2, L=860/530.

LON. 3.150-3, L=828/530

LON. 3.170-1; L=780/530

LON. 3.190-1, a-15

Rekvissionsbetegnelse	Materiale	Model nr.	Mindstebeholdn.
Siderist, LON. 3.200-73	Flussjern		Kh. Ar

0

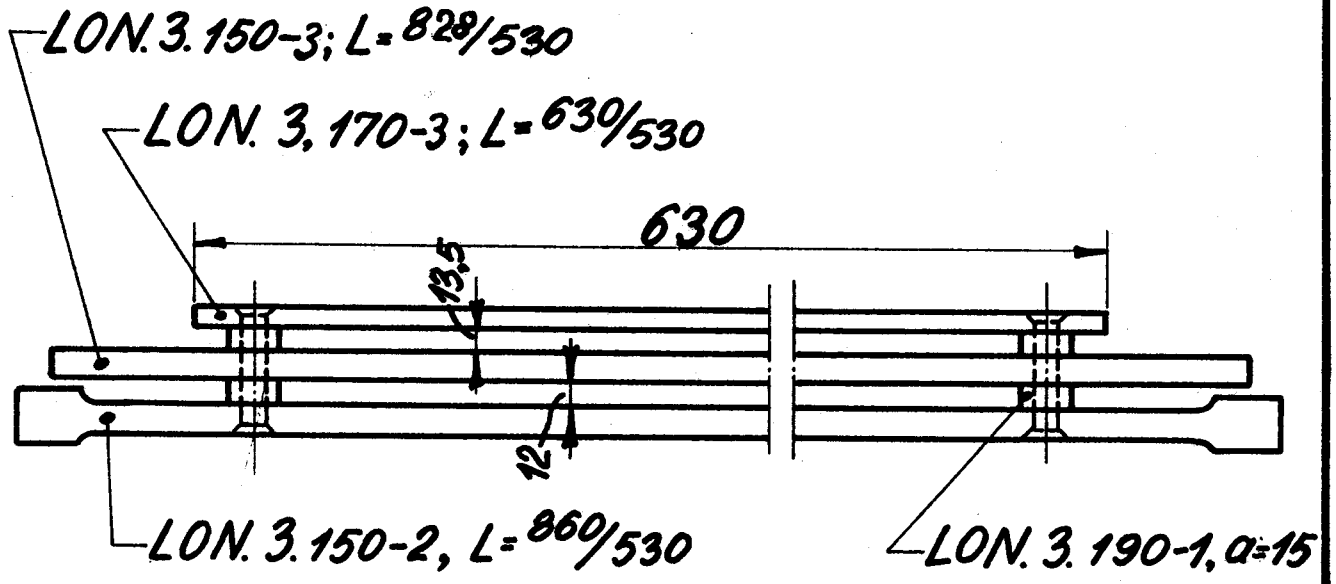
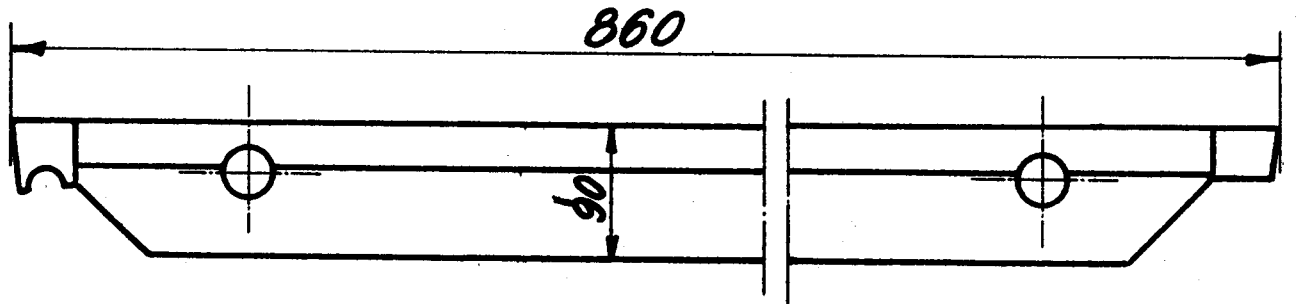
LON.
D.S.B.

Siderist for loko.
litra Hsr.

3.200-74.

Kun for nittet fyrkasse

1949



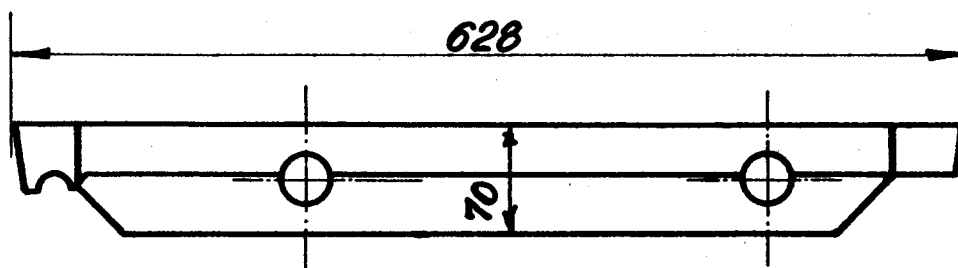
Rekvissionsbetegnelse	Materiale	Model nr.	Mindstebeholdn.
Siderist, LON. 3.200-74.	Flussjern		Kh. Ar.

LON.
D.S.B.

Bagsiderist for loko. litra Af.
Nr. 119-122, Nr. 123-126.

3.200-75.

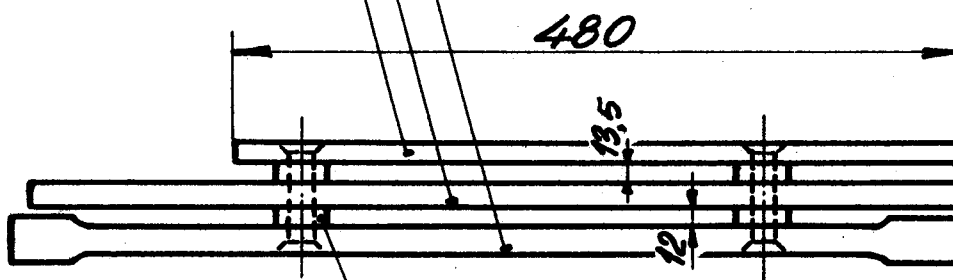
Kun for nittet fyrkasse



LON. 3.170-2, L = 480/305

LON. 3.160-3, L = 613/305

LON. 3.160-2, L = 628/305



LON. 3.190-1, a = 15

Venstre bagsiderist som vist.

Højre do. modsat.

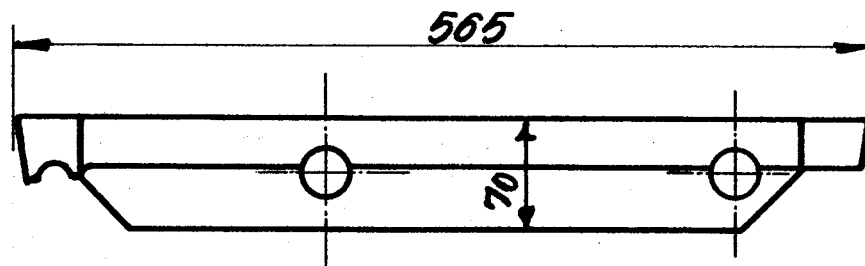
Rekviseptionsbetegnelse	Materiale	Model nr.	Mindstebeholdn.
Bagsiderist, LON. 3.200-75.	Flussjern		Kh. Ar.

LON.
D.S.B.

Bagsiderist for loko. litra AF.
Nr. 123-126.

3.200-77

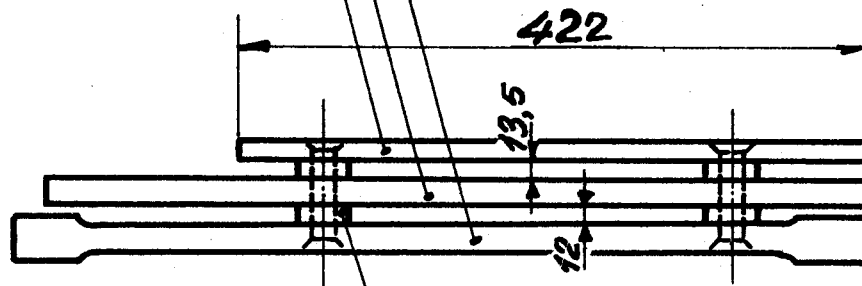
Kun for nittet fyrkasse



LON. 3.170-2, L=422/270

LON. 3.160-3, L=545/270

LON. 3.160-2, L=565/270



LON. 3.190-1, $\alpha=15$

*Højre bagsiderist som vist.
Venstre do. modsat*

Rekvissionsbetegnelse

Materiale

Model nr.

Mindstebeholdn

Bagsiderist, LON. 3.200-77.

Flussjern

Kh.

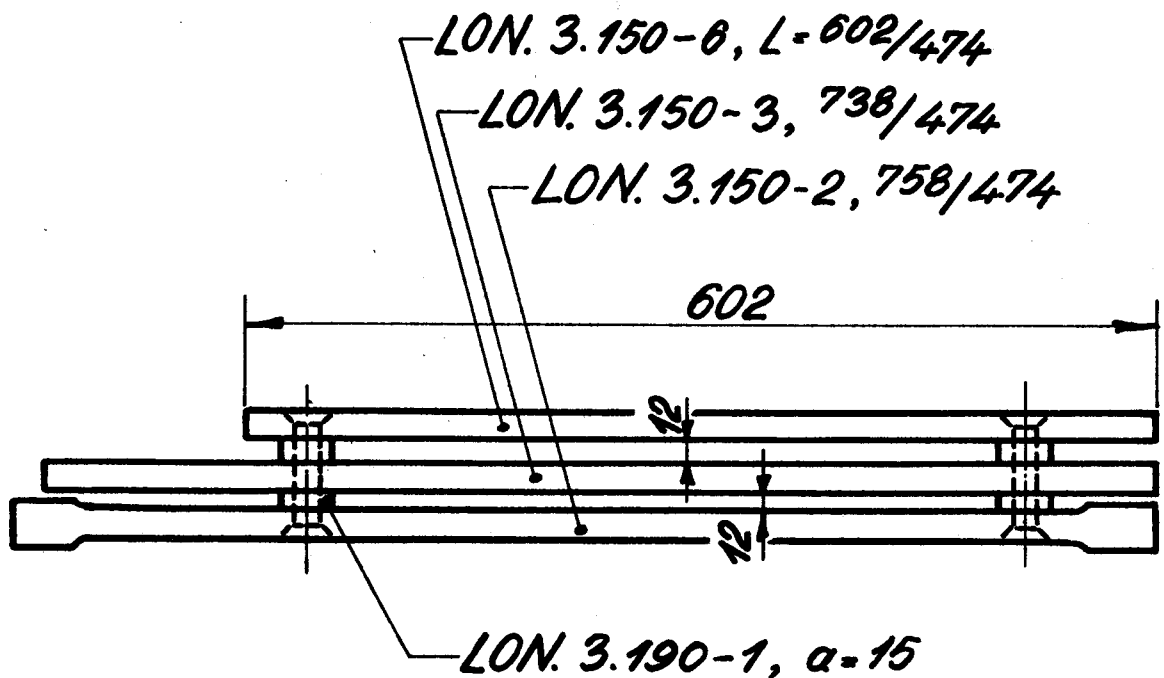
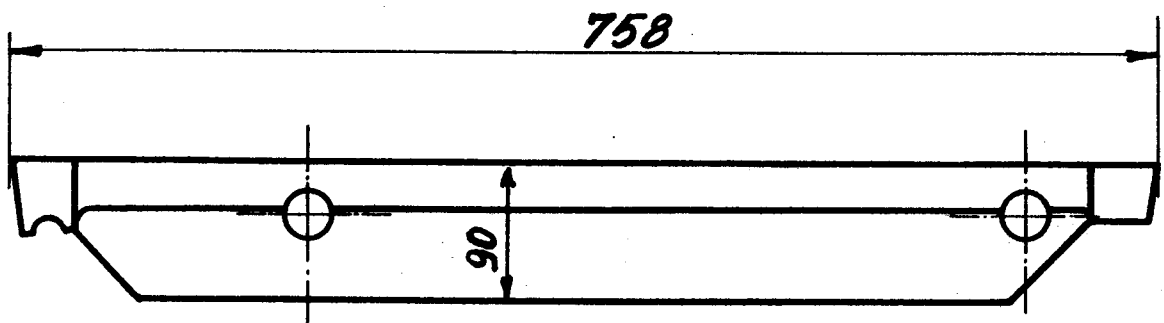
Ar.

LON.
D.S.B

Bagsiderist for loko. litra DF.

3.200-78.

Kun for nittet fyrkasse



*Højre bagsiderist som vist.
Venstre do modsat.*

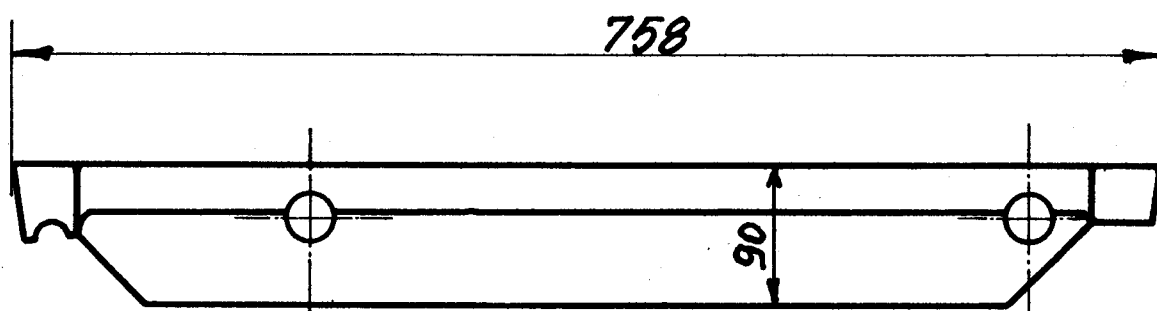
Rekvissionsbetegnelse	Materiale	Model nr.	Mindestebeløb
Bagsiderist, LON. 3.200-78	Flussjern		Kh. Ar.

LON.
D.S.B.

Bagsiderist for loko. litra DF

3.200-79.

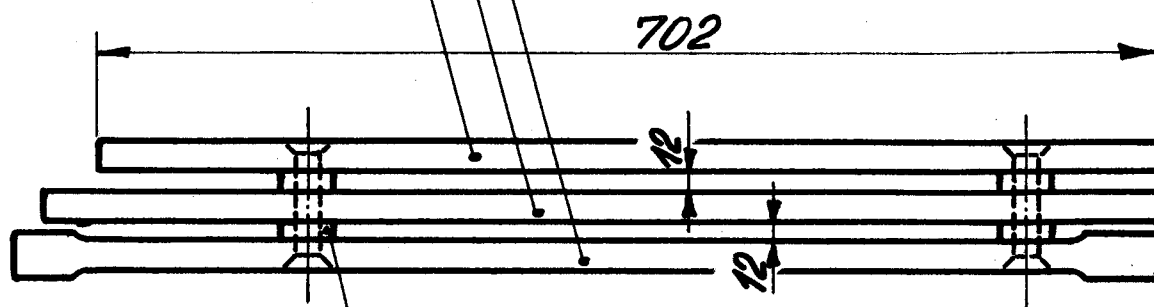
Kun for svejst fyrkasse



LON. 3.150-6, L=702/474

LON. 3.150-3, L=738/474

LON. 3.150-2, L=758/474



LON. 3.190-1, $\alpha=15$

*Højre bagsiderist som vist.
Venstre do modsat.*

Rekvissionsbetegnelse	Materiale	Model nr.	Mindstebehold.
Bagsiderist, LON. 3.200-79	Flussjern		Kh. Ar.