

LON
D.S.B.

Injektor Nr. 10 1/2.

4.043.

LON 4.043 - 1

LON 4.551.

LON 4.043 - 23

LON 4.043 - 22

LON 4.061 - 7

LON 4.061 - 9

LON 4.043-27

LON 4.061 - 8

LON 4.043 - 25

LON 4.043 - 24

LON. 4.043 -17

LON 4.043-26

LON 4.043 - 8

LON 4.043 - 16

LON 4.043 - 9

LON 4.043 - 10

LON 4.043 - 21

LON 4.043 - 20

LON 4.043 - 19

LON 4.043 - 18

LON 4.043 - 11

LON 4.043 - 15

LON 4.043 - 14

LON 4.043 - 12

Rekviseptionsbetegnelse

Materiale

Model.Nr.

Mindstebeholdn.

Injektor

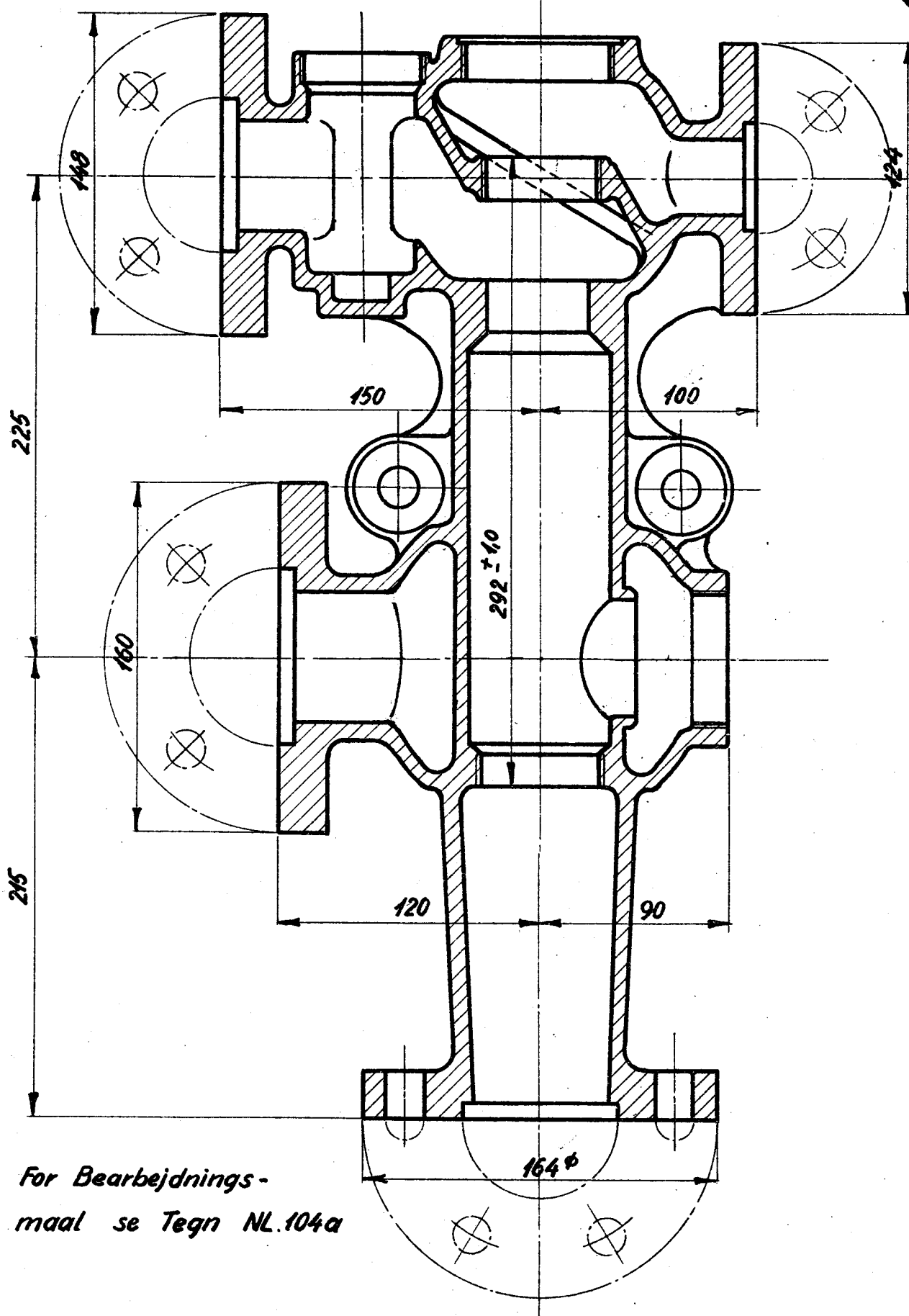
LON. 4.043.

Kh. 2

Ar. 0

4.043-1

1946.



For Bearbejdnings-
maal se Tegn NL.104a

<i>Rekvisitionsbetegnelse</i>	<i>Materiale</i>	<i>Model.Nr.</i>	<i>Mindstebeholdn</i>	
<i>Hus, LON. 4.043-1</i>	<i>Hanebrønse</i>	<i>3451</i>	<i>Kh. 0.</i>	<i>Ar. 4.</i>

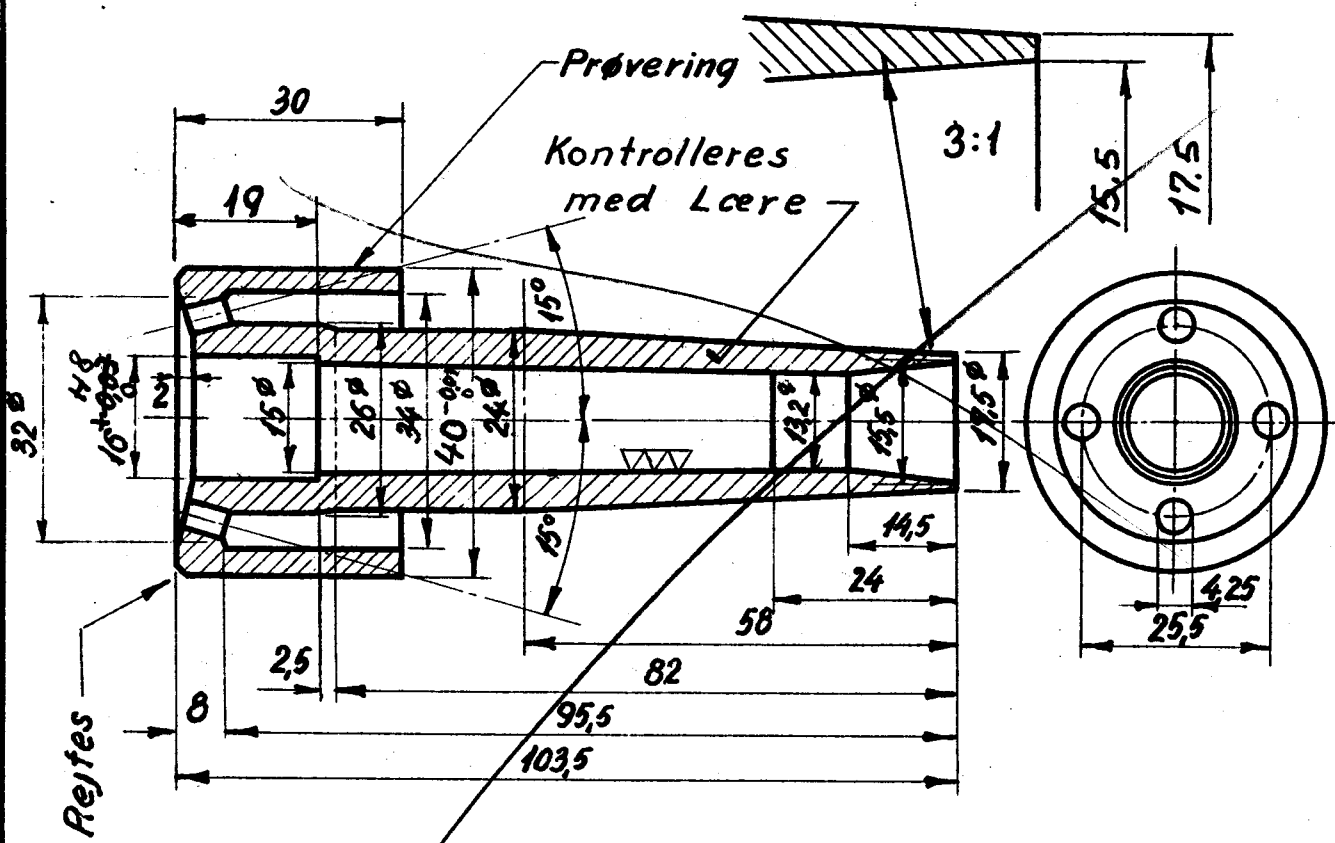
0.
1.
2.
3.

LON
D.S.B.

Dampdyse.

4.043-2.

1946



▽ overalt

Udgå
1673/5+

Ved Rekv. fra Lager se LON. 4.043-26

Rekv. betegnelse	Materiale	Model Nr.	Mindstebeholdn
1/ Dampdyse, LON. 4.043-2	Hanebrønde.	3473	Kh. 0 Ar. 0

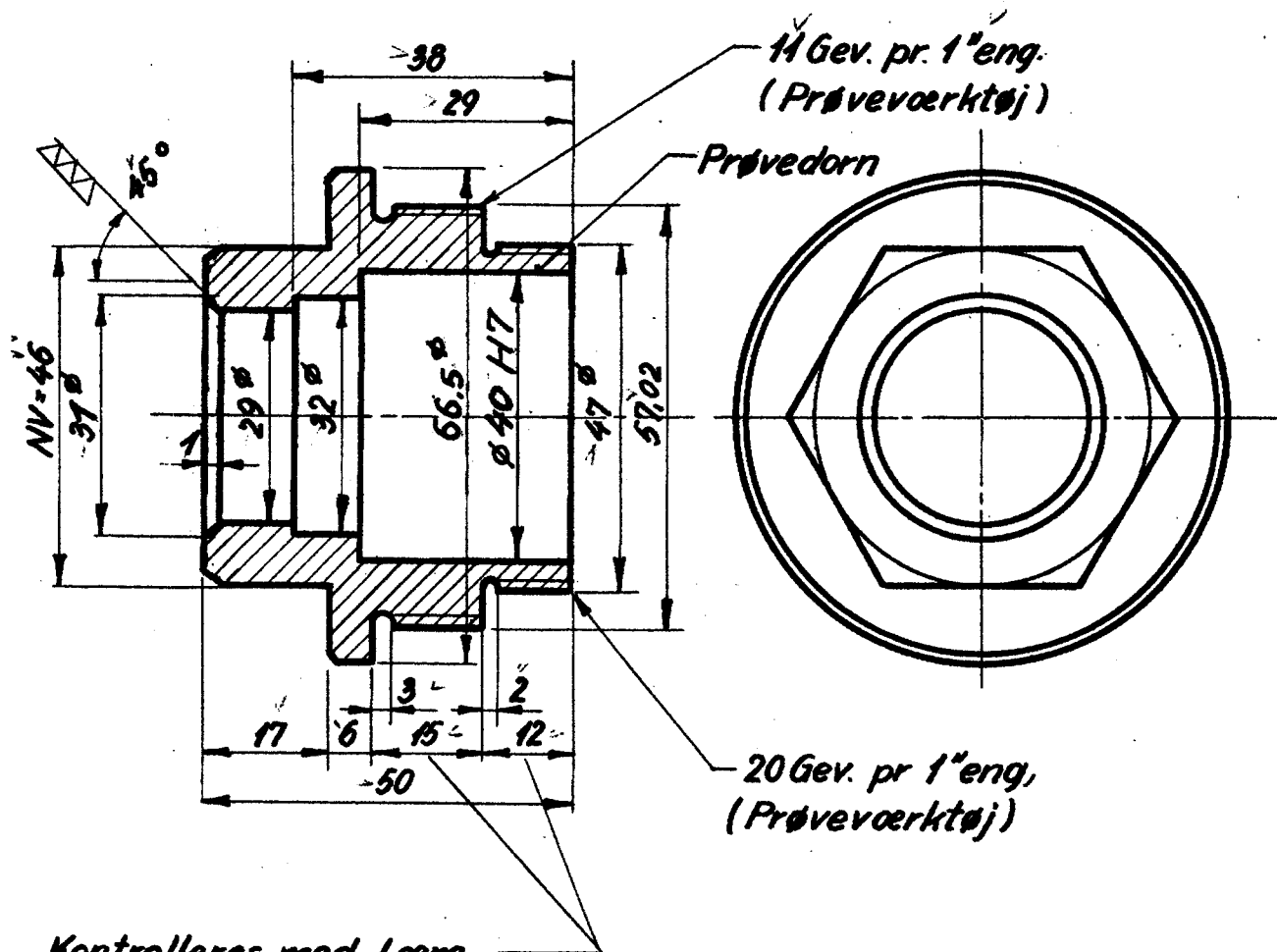
0.
1
2
3

LON
D.S.B.

Dyseholder.

Al
4.043-3.

1946.



▽ overalt.

Til injektor LON. 4.041 rekv. fra lager efter LON. 4.041-26
do. LON. 4.043 do. do. do. LON. 4.043-26

Førstel. ændr. af henvisn til LON.
4.043-26 indf. A. d. 18.12.62 Jørgen

Rekvissionsbetegnelse	Materiale.	Model. Nr.	Mindesteholdn.
Dyseholder. LON. 4.043-3	Hanebrønse.	3475	

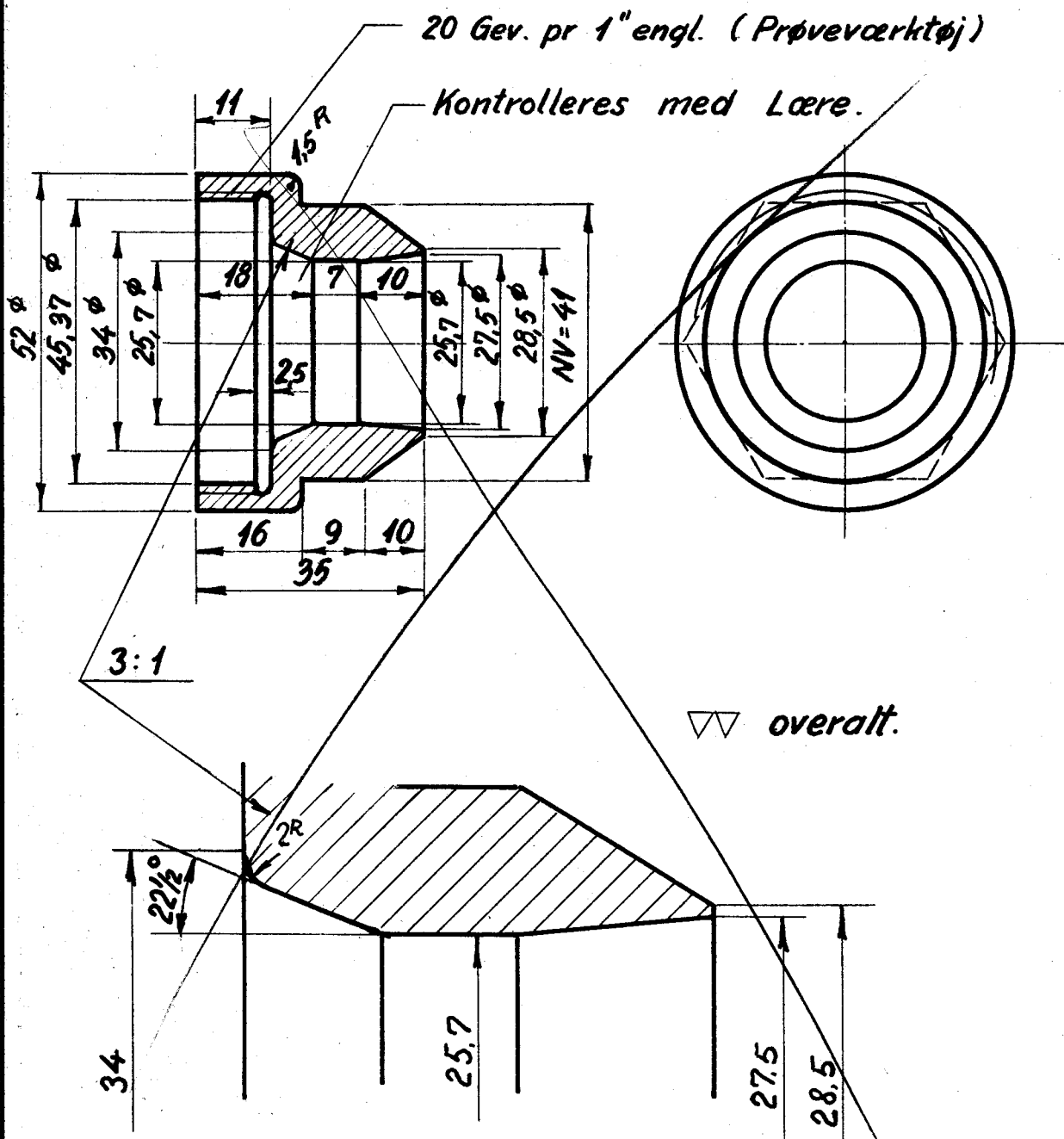
0.
1.
2.
3.

LON.
D.S.B.

Ringdyse.

4.043-4.

1946.
1953

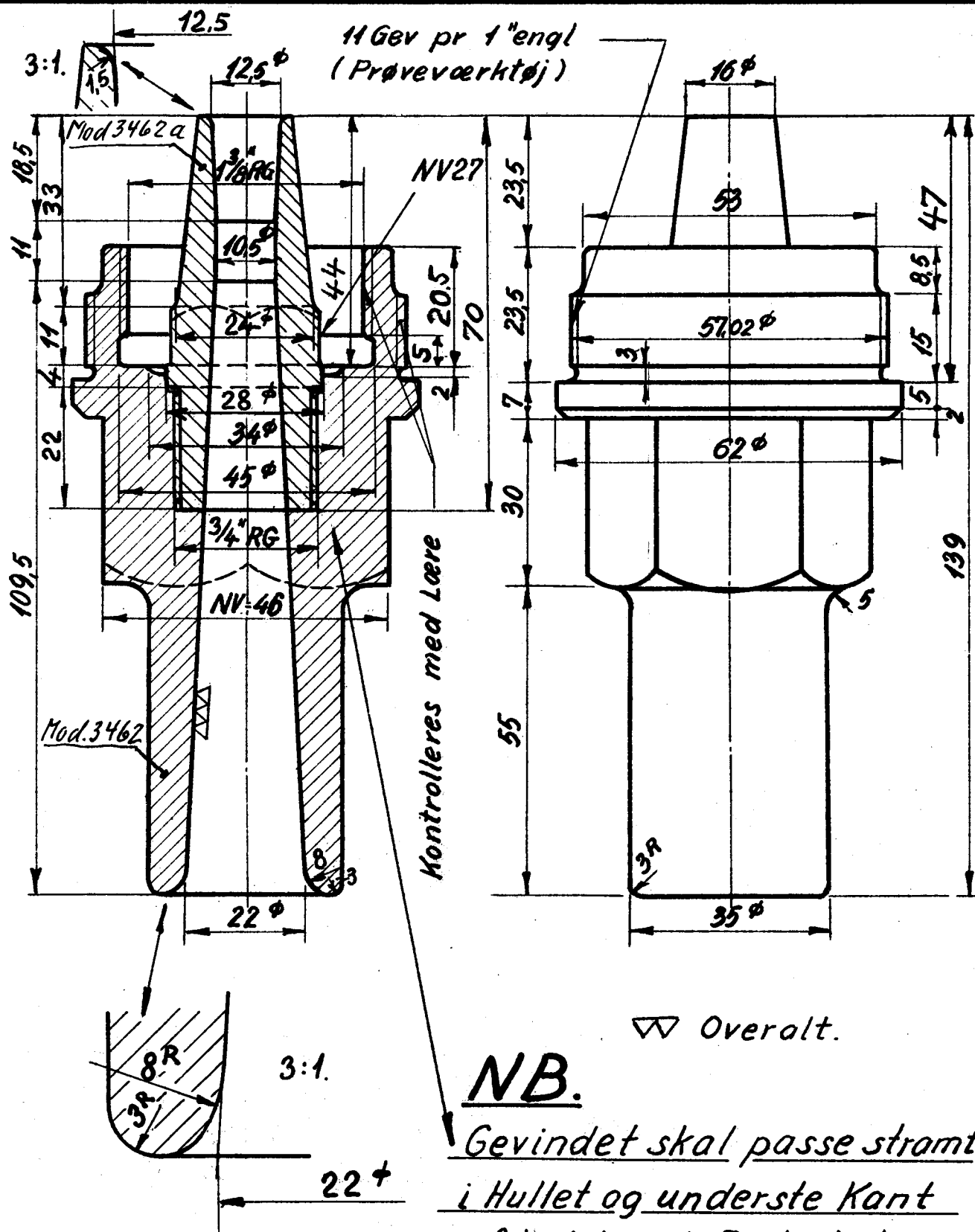


Ved Rekv. fra Lager se LON 4.043-26.

Udgave
(M 7673/57)

Rekviseptionsbetegnelse	Materialer	Model.Nr.	Mindstebeholdn
Ringdyse. LON. 4.043-4	Hanebrønze	3474	Kh. 0. Ar. 0.

1946.



▽▽ Overall.

NB.

Gevindet skal passe stramt
i Hullet og underste Kant
af indskruet Part skal
træde i Bunden.

Ved Rekv. fra Lager se LON. 4.043-27

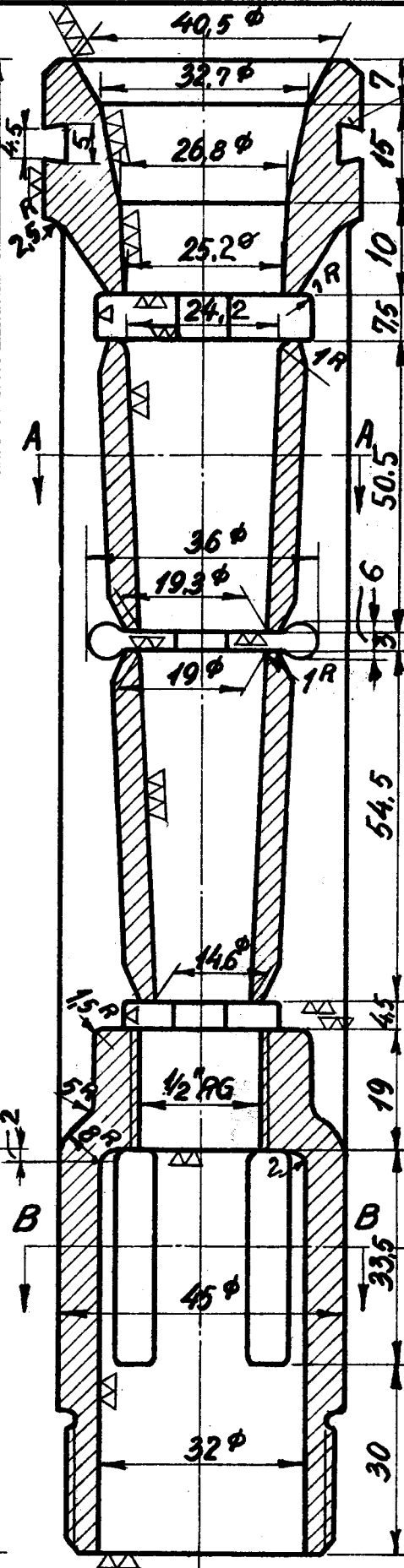
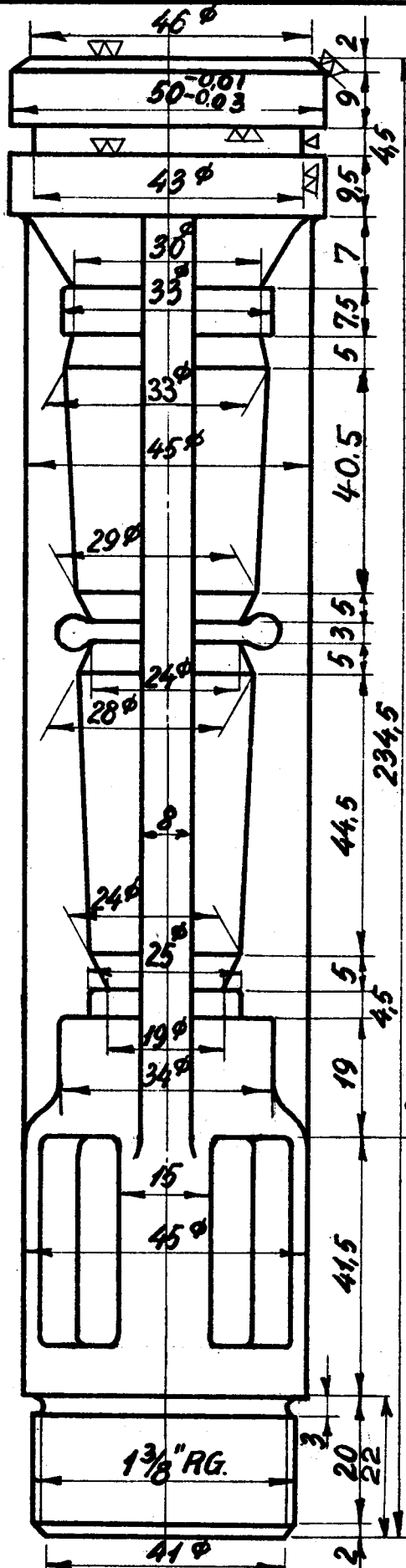
<i>Rekvisitionsbetegnelse</i>	<i>Materiale.</i>	<i>Model. Nr.</i>	<i>Mindestbeholdn.</i>	
<i>Forpart. LON. 4.043-5</i>	<i>Hanebrønze</i>	<i>3462</i>	<i>Kh. 0</i>	<i>Ar. 0</i>

0.
1.
2.

LON
D.S.B.

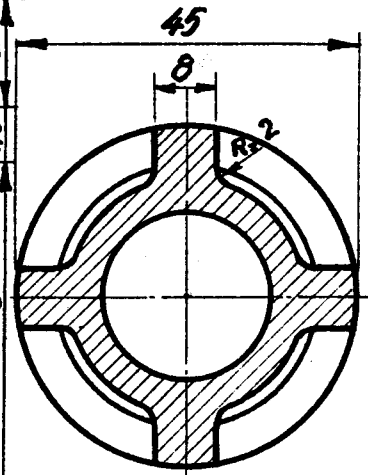
Straalerør.

4.043-6.



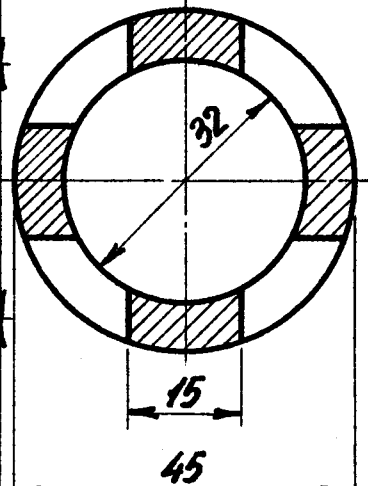
Prøvering

Snit A-A.



Prøveværktøj

Snit B-B.



Ved Rekv. fra La-
ger se LON. 4.043-27.

Rekvissionsbetegnelse	Materiale	Model. Nr.	Mindstebeholdn.
Straalerør. LON. 4.043-6.	Hanebronz	3461	Kh. 0 Ar 0

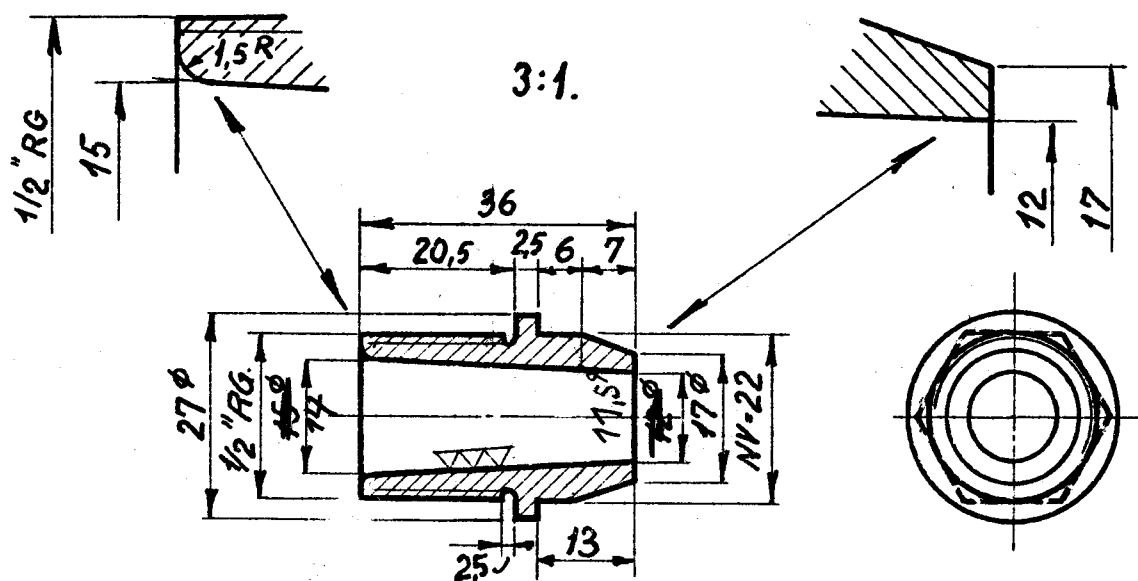
0
1
2

LON
D. S. B.

Mundstykke for Straalerør

4.043-7

M7113/53



▽ overalt

Ved Rekv. fra Lager se LON. 4.043-27.

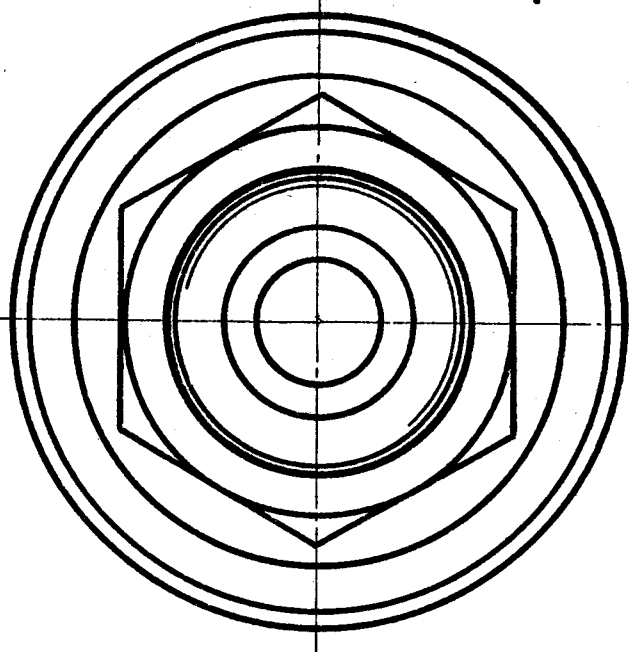
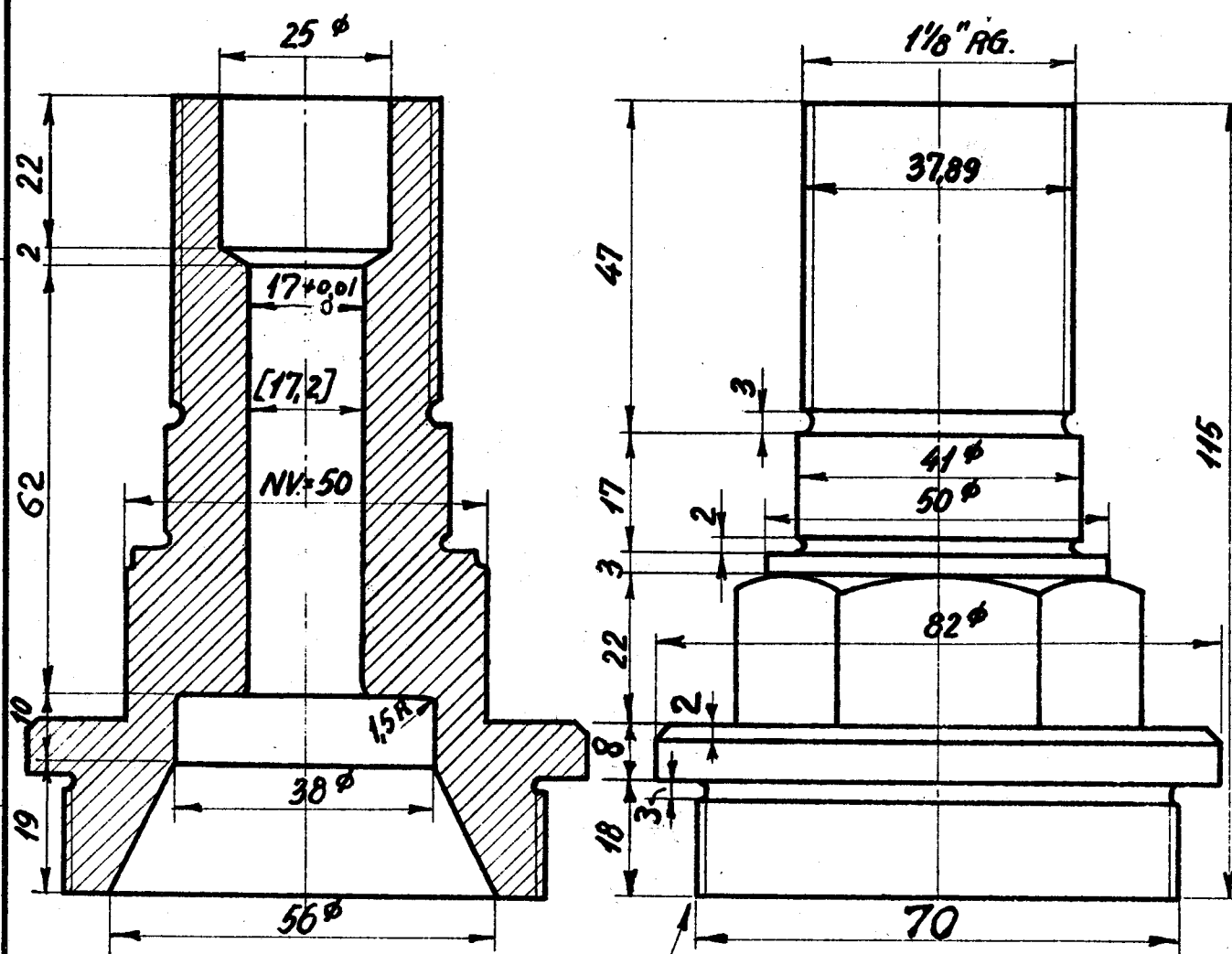
Rekv. betegnelse	Materiale	Model Nr.	Mindstebeholdn
Mundstykke, LON. 4.043-7	Hanebrønse.	3465.	Kh. 0. Ar. 0.

LON
D.S.B.

Styr for Pinol

4.043-8

1946



Maal i [] betegner den
største Dimension, hvortil
der maa slides.

Rekviseptionsbetegnelse.		Materiale	Model Nr.	Mindstebeholdn.	
Styr f. Pinol	LON. 4043-8	Hanebronz	3466.	Mh. 0.	Ar 0.

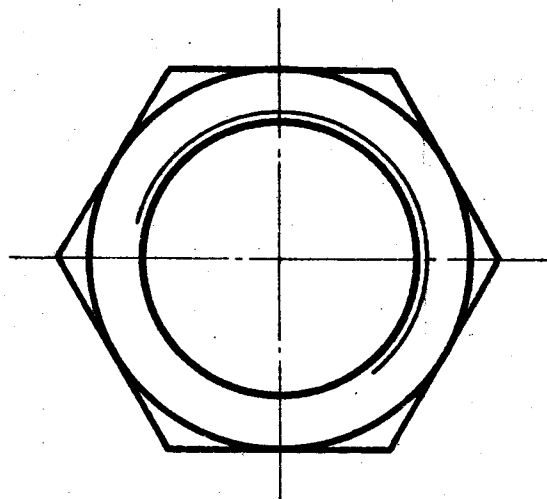
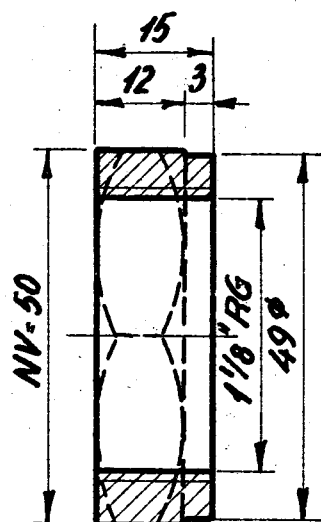
0

LON
D.S.B.

Møtrik.

4.043-9

1946



▽ overalt

Rekvisitionsbetegnelse	Materiale	Model Nr.	Mindstebeholdn.
Møtrik, LON. 4043 - 9	Hanebrønze		Kh. 0. Ar. 0.

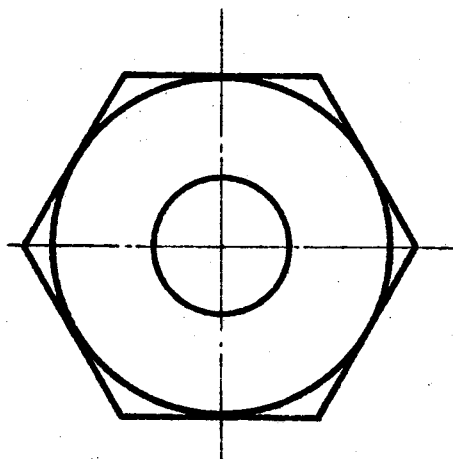
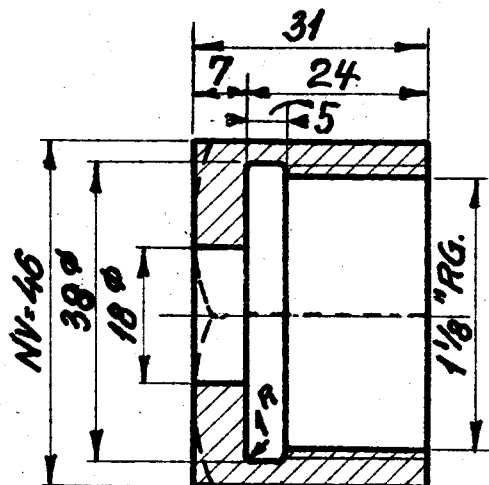
0

LON
D.S.B.

Omløber.

4.043-10

1946.



▽ overalt

Rekviseptionsbetegnelse	Materiale	Model Nr.	Mindstebeholdn.	
Omløber, LON. 4.043 - 10	Hanebrønze	3467.	Kh. 0.	Ar. 0.

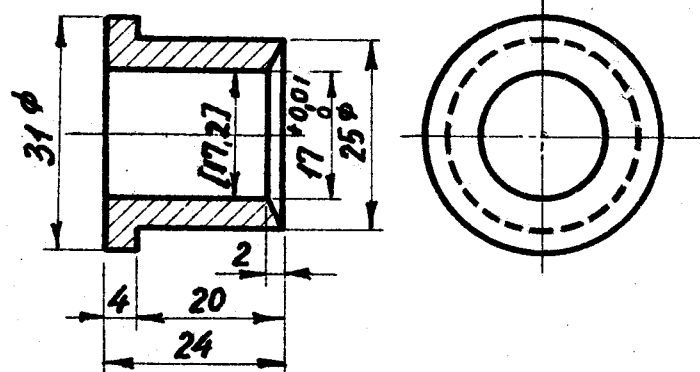
0

LON
D.S.B.

Pakbøsning.

4.043-11

1946



Målet i [] betegner
den største Dimension.
hvortil der maa slides.

▽ overalt

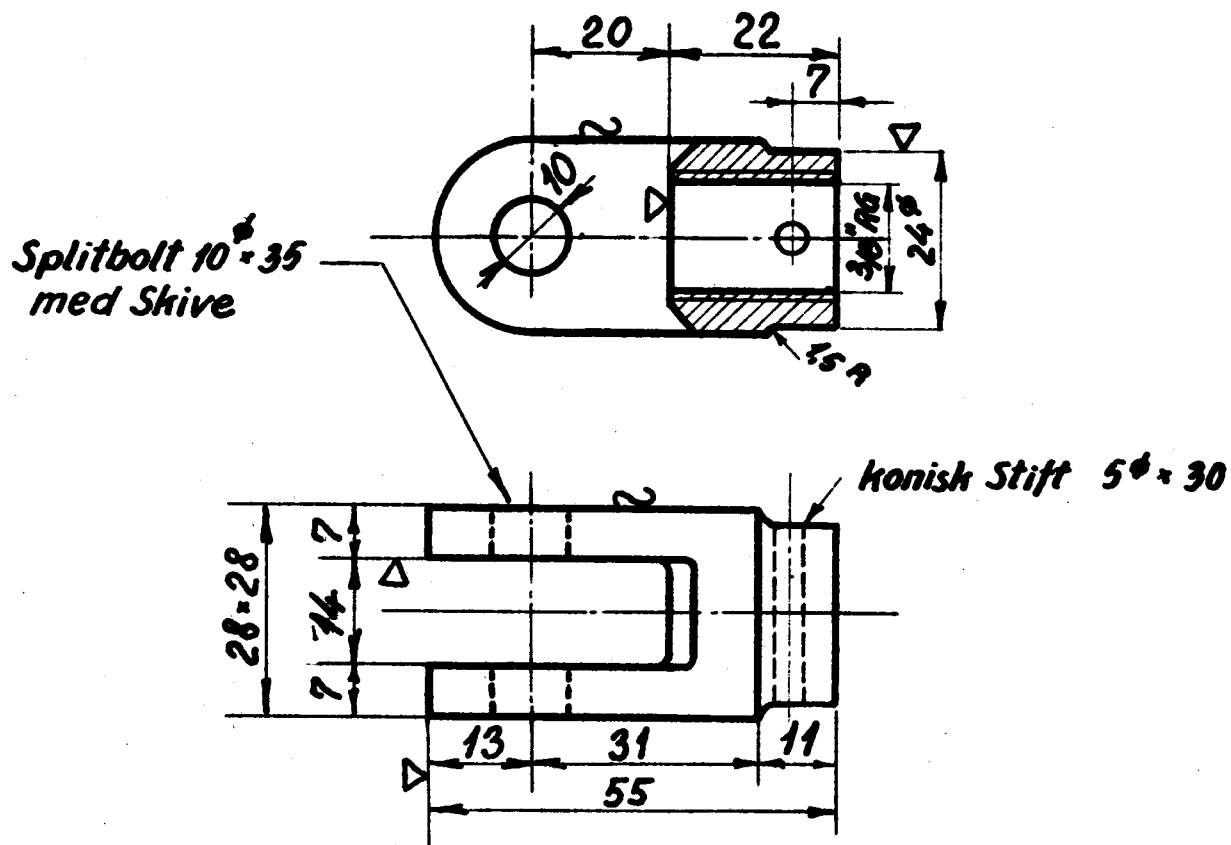
Rekvisitionsbetegnelse	Materiale	Model Nr.	Mindstebeholdn.
Pakbøsning, LON. 4.043-11	Messing		Kh. 0, Ar 0.

LON
D.S.B.

Gaffelstykke for Pinol.

4.043-12

1946



Rekviseptionsbetegnelse	Materiale	Model Nr.	Mindstebeholdn.
Gaffelstykke, LON. 4.043-12	Stangjern		Kh. 0. Ar. 0.

0
1.
2

LON
D.S.B.

Pinol.

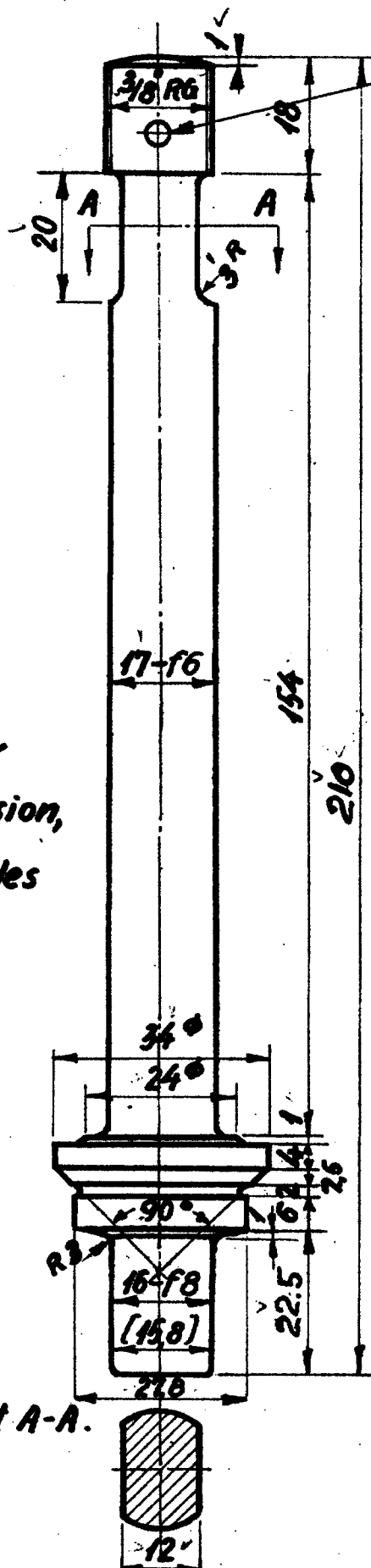
A

4.043-13

1946

▽ overalt

Maalene i [] betegner
den mindste Dimension,
hvortil der maa slides



Hul for
konisk Stift 5 mm.

Til injektor LON. 4.041 rekr. fra lager efter LON. 4.041-26
do. LON. 4.043 do. do. LON. 4.043-26

Rekviseptionsbetegnelse

Materiale.

Model Nr.

Mindstebeholdn.

Pinol

LON, 4.043-13

Rustfr. Staal

Henvi. til LON 4.043-26 indf.
A d. 18.12.62, Damber

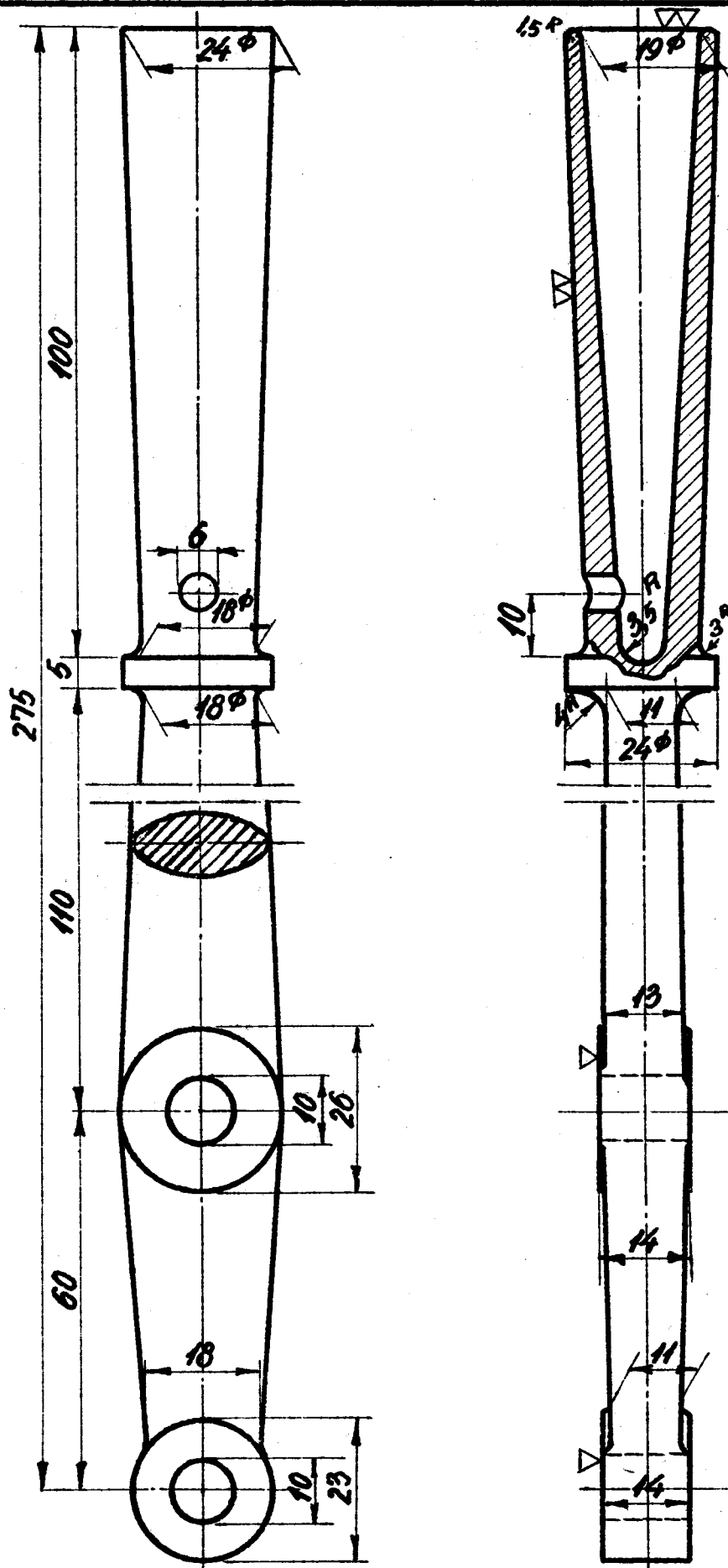
0

LON
D.S.B.

Haandtag

4.043-14

1946.



Rekvisitionbetegnelse	Materiale	Model.Nr.	Mindstebeholdn.	
Haandtag, LON. 4.043 - 14.	Hammerb. Stbj.	3469	Kh 20	Ar 10

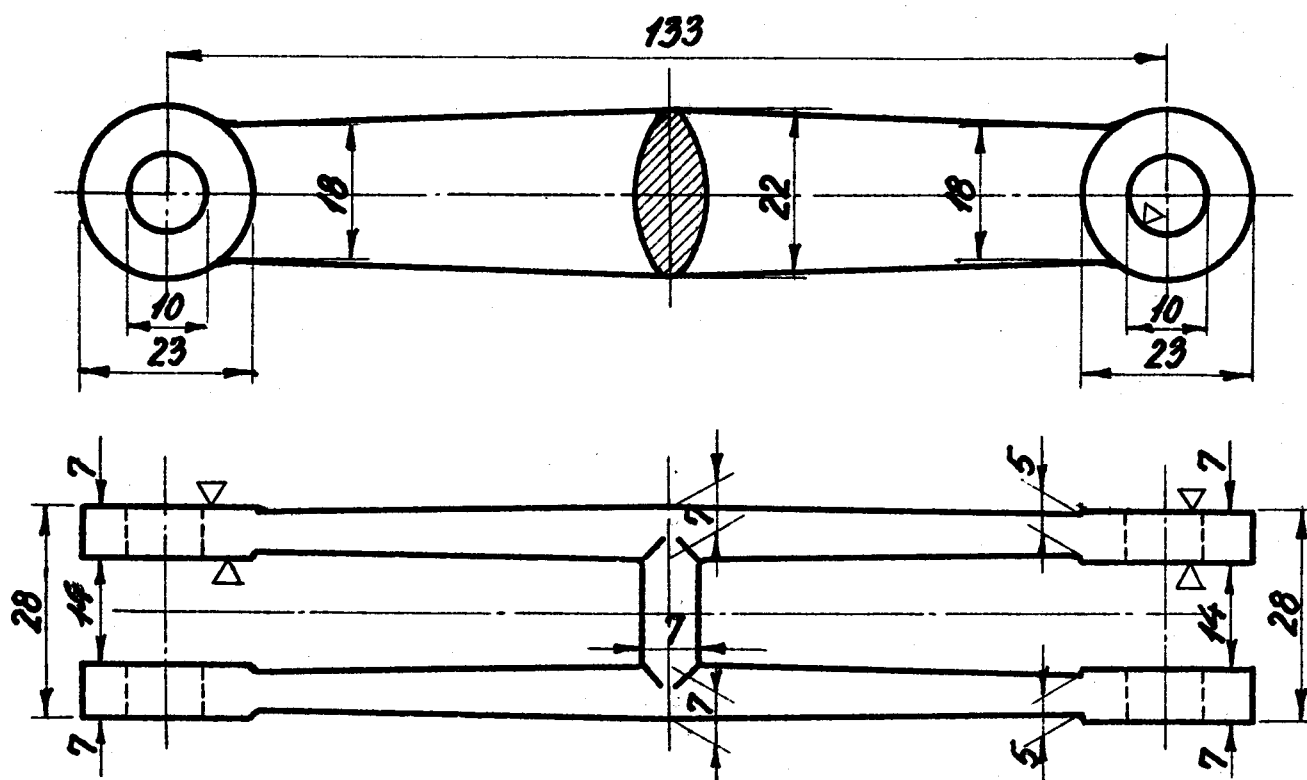
0

LON
D.S.B.

Forbindelsesled.

4.043-15

1946.



Rekviseptionsbetegnelse	Materiale	Model. Nr.	Mindstebeholdn.
Forbindelsesled. LON. 4.043-15	Hammerb. Stbj.	3470.	Kh. 5. Ar 10.

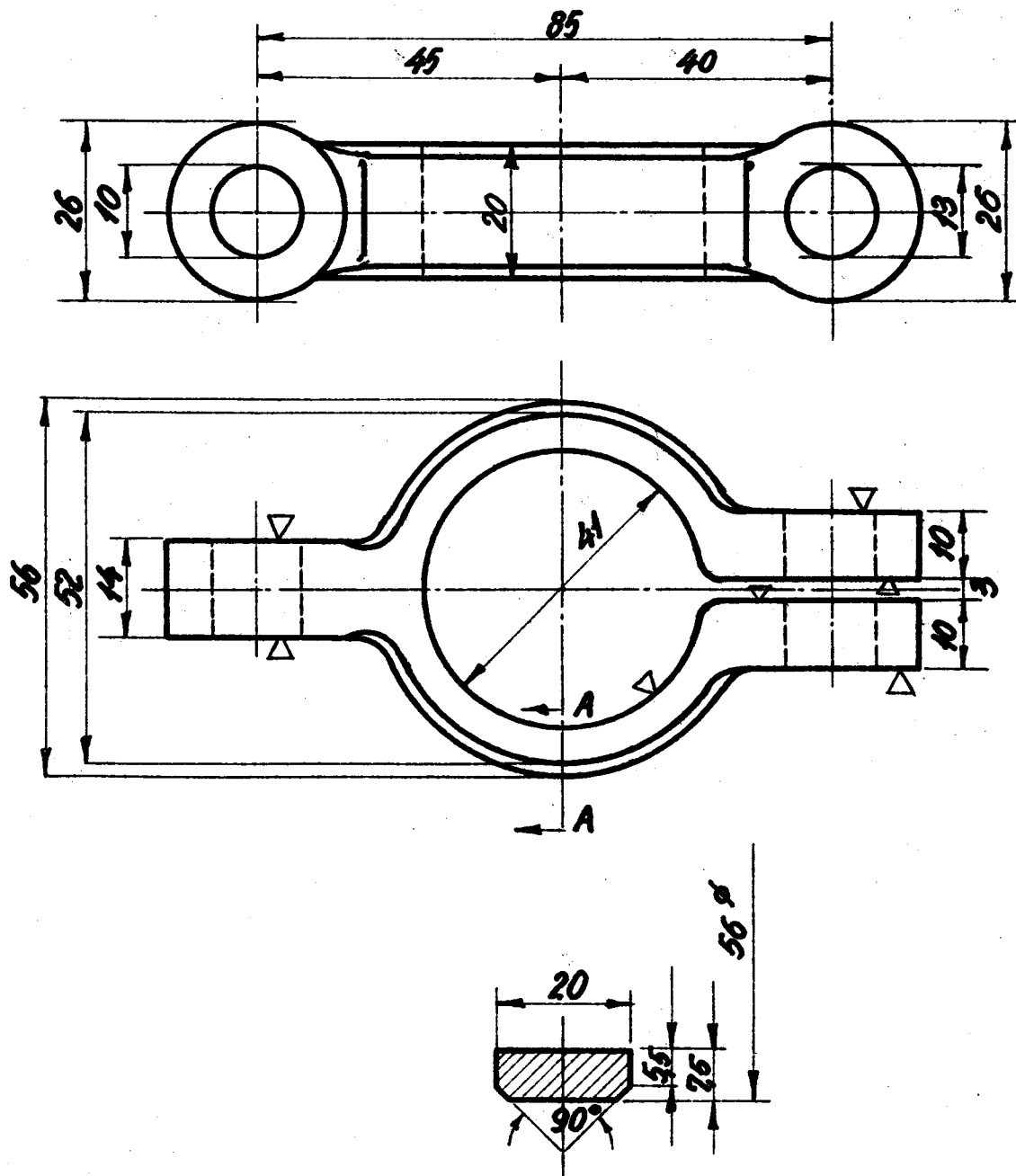
0

LON
D. S. B.

Spøndejern.

4.043-16

1946.



Snit A-A

Rekviseptionsbetegnelse	Materiale	Model. Nr.	Mindstebeholdn.
Spøndejern. LON. 4.043-16	Hammerb. Stbj.	3471	Kh. 5. Ar. 10.

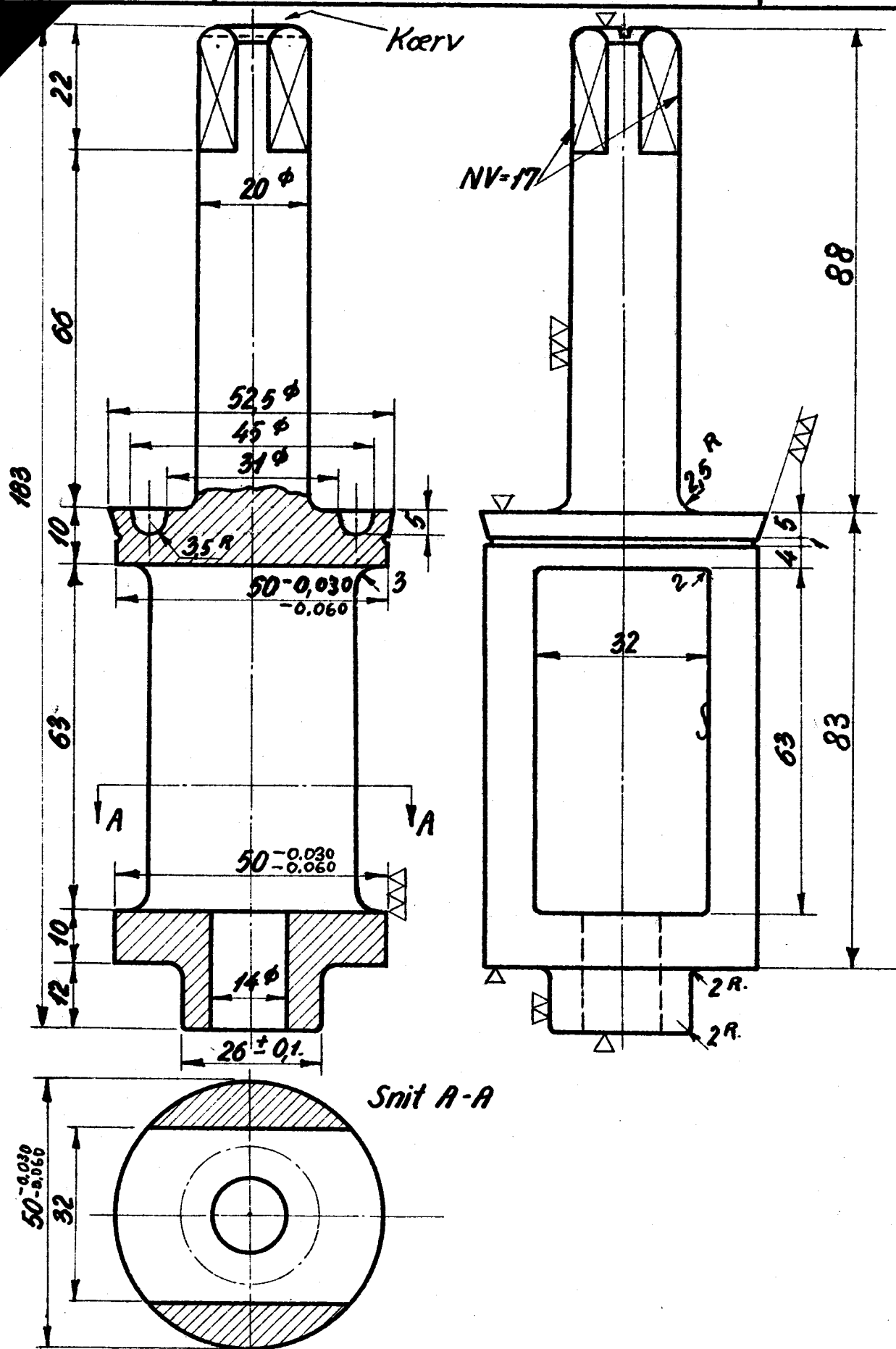
0

LON.
D.S.B.

Hanetold.

4.043-17

1946



Rekviseptionsbetegnelse.

Materiale.

Model Nr.

Mindstebeholdn.

Hanetold LON. 4043 - 17

Hanebrønde

3457

Kh. 5.

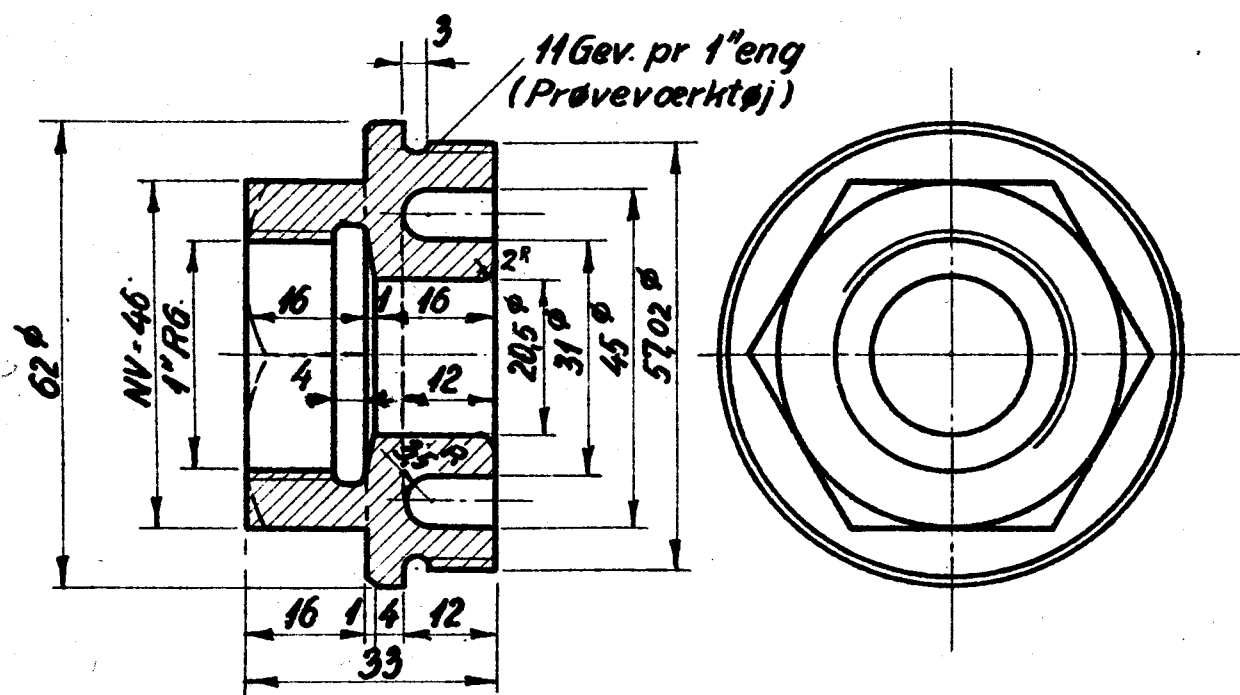
Ar. 0.

LON.
D.S.B.

Forskruning.

4.043-18

1946.



▽ overalt.

Rekvissionsbetegnelse	Materiale	Model Nr.	Mindstebeholdn.
Forskruning 4.043 - 18	Hanebrønze	3459	Kh. 5. Ar. 0.

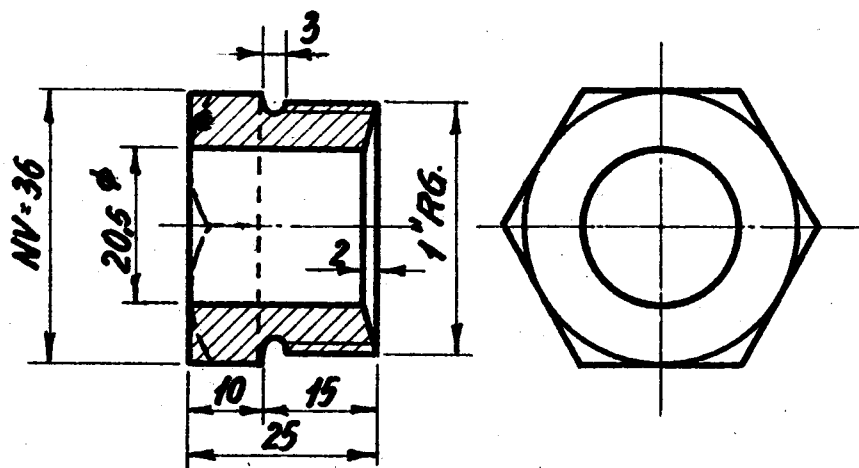
Q

LON.
D. S. B.

Pakmøtrik.

4.043-19

1946.



▽ overalt.

Rekviseptionsbetegnelse.

Materiale.

Model. Nr.

Mindstebeholdn.

Pakmøtrik LON 4.043 - 19.

Messing

Kh. 5

Ar. 0.

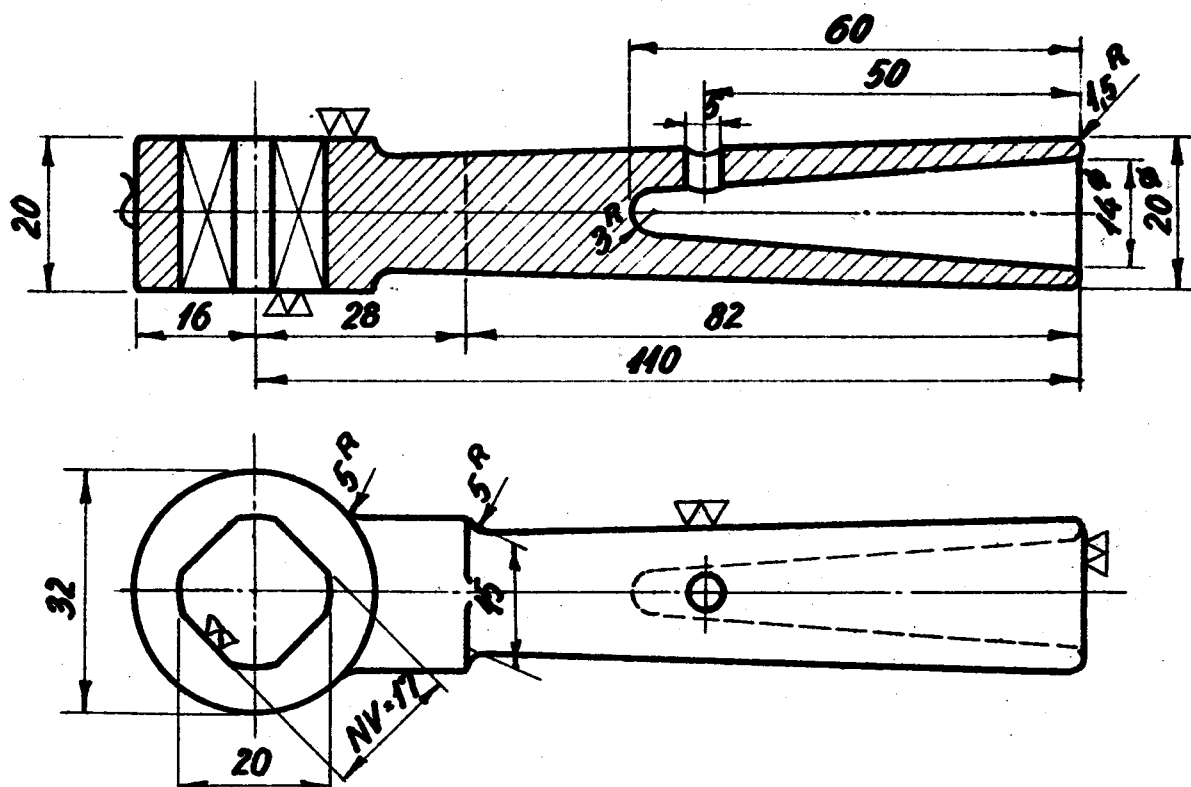
Q

LON.
D.S.B.

Haandtag til Vandhane.

4.043-20

1946.



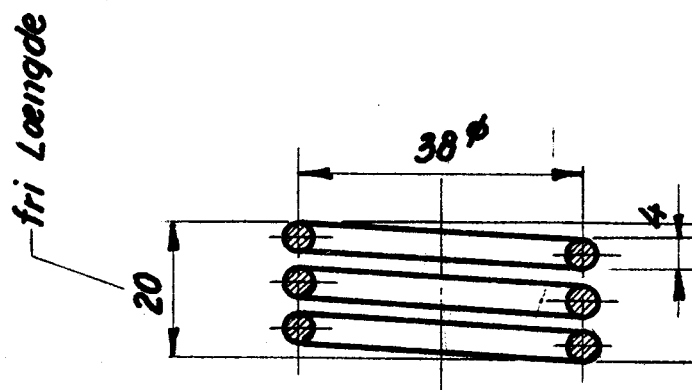
Rekviseptionsbetegnelse	Materiale.	Model Nr.	Mindstebeholdn.
Haandtag. LON. 4.043 - 20	Hanebronz	3458	Kh. 5. Ar. 0.

LON
D.S.B.

Fjeder.

4.043-21

1946.



Antal frie Vindinger = 3.

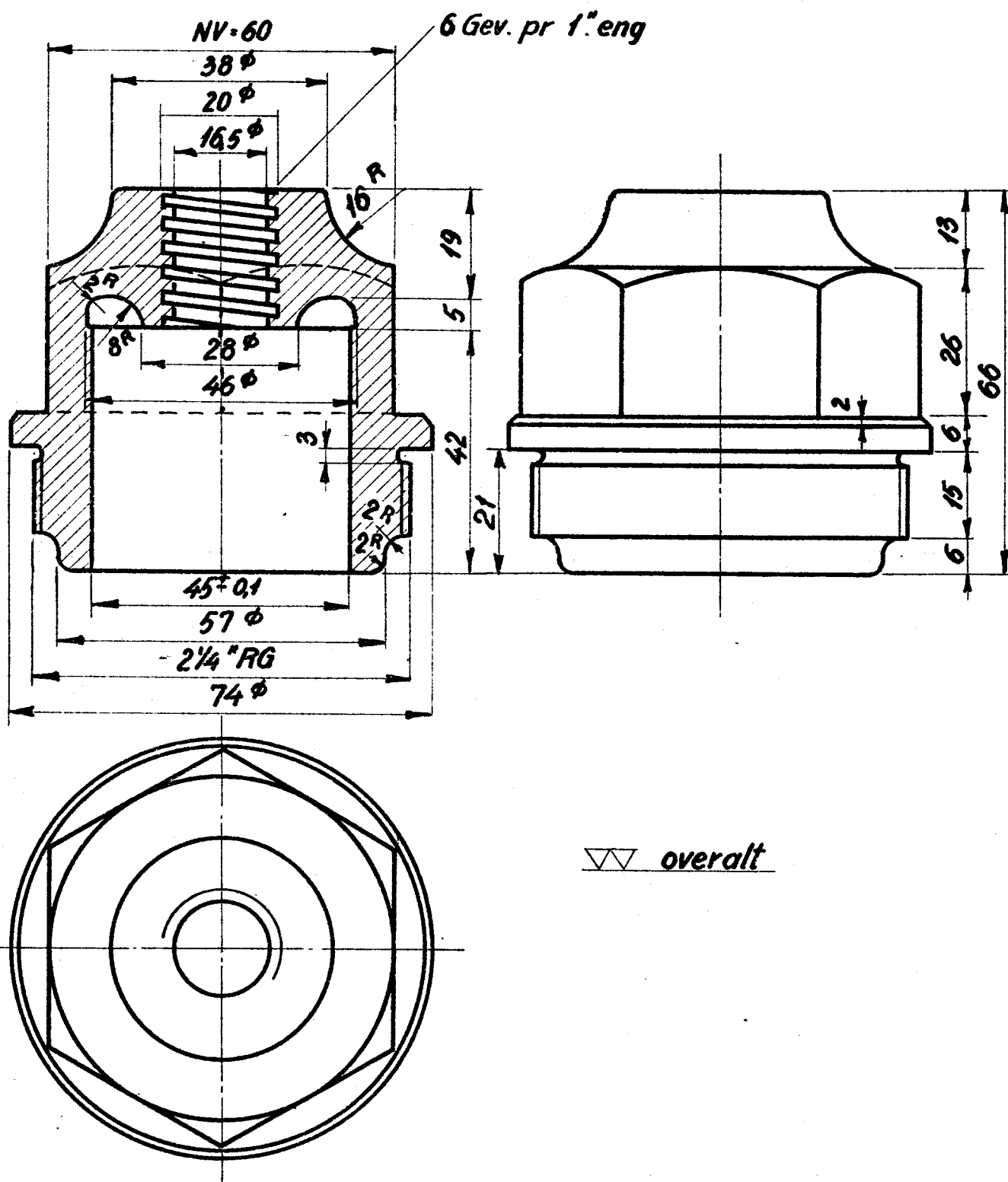
Rekviseptionsbetegnelse	Materiale	Model Nr.	Mindstebeholdn
Fjeder. LON 4. 043 - 21	Fosforbr.		Kh 5. Ar. 0.

0

Spindelstyr.

4.043-22.

1946



<i>Rekvisationsbetegnelse</i>	<i>Materiale</i>	<i>Model Nr.</i>	<i>Mindstebeholdn.</i>	
<i>Spindelstyr, LON. 4.043 - 22</i>	<i>Hanebrønze.</i>	<i>3456</i>	<i>Kh. 5.</i>	<i>Ar. 5.</i>

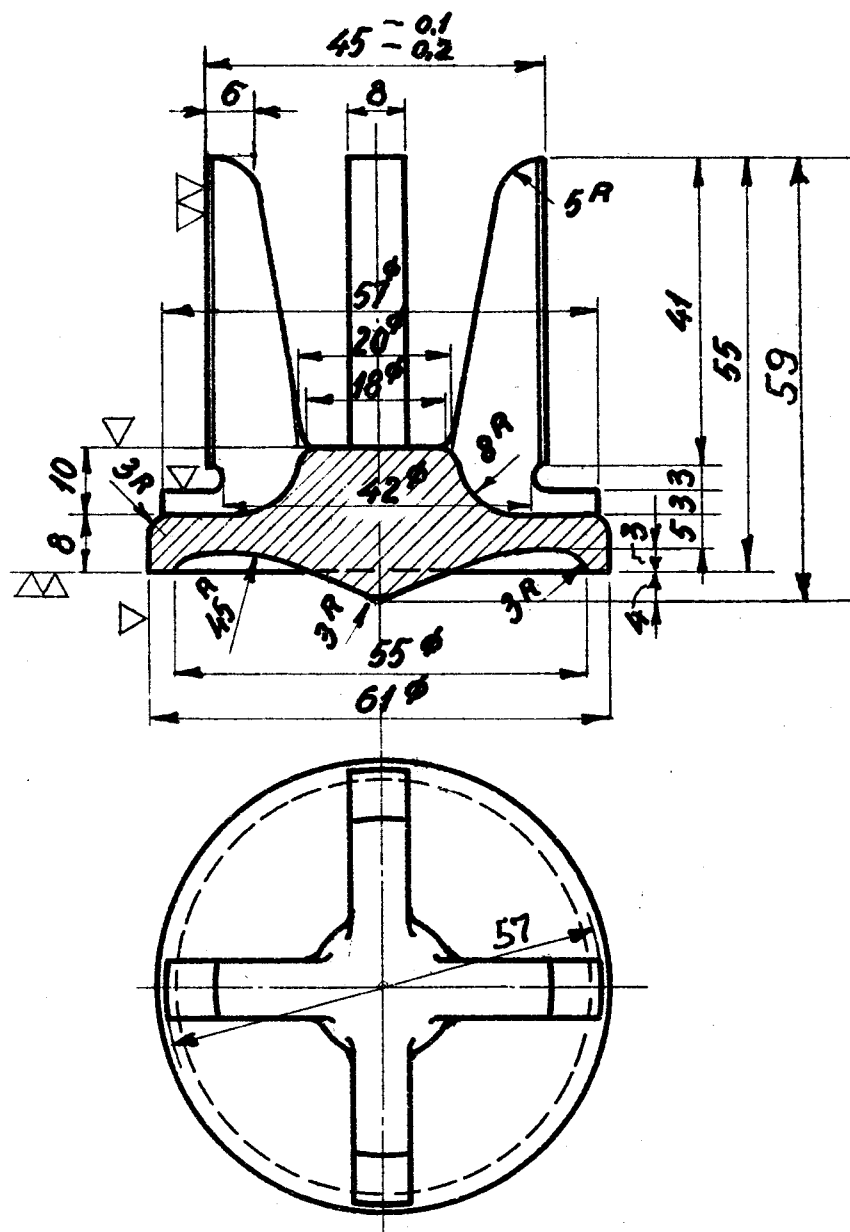
0

LON.
D.S.B.

Ventilkegle.

4.043-23.

1946



Rekvisitionsbetegnelse	Materiale	Model Nr.	Mindstebeholdn.	
Ventilkegle, LON. 4.043 - 23	Hanebrønze.	3455	Kh. 10	Ar. 10

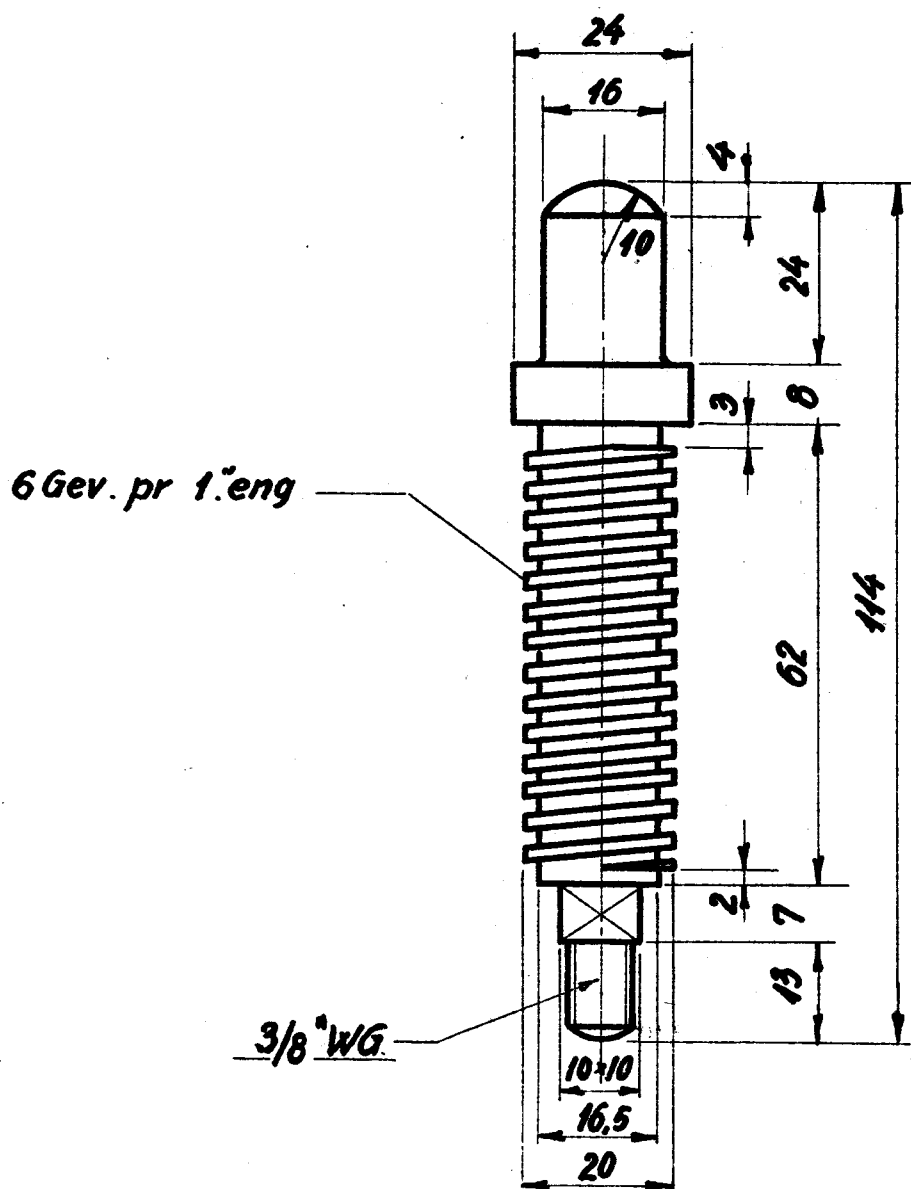
0

LON.
D.S.B.

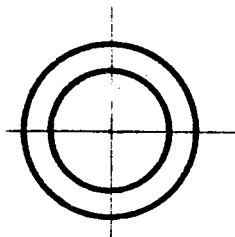
Spindel.

4.043-24.

1946



▽▽ overalt



Rekvisitionsbetegnelse		Materiale	Model Nr	Mindstebeholdn.	
Spindel	LON. 4.043 - 24	Messing		Kh 10.	Ar 0

0

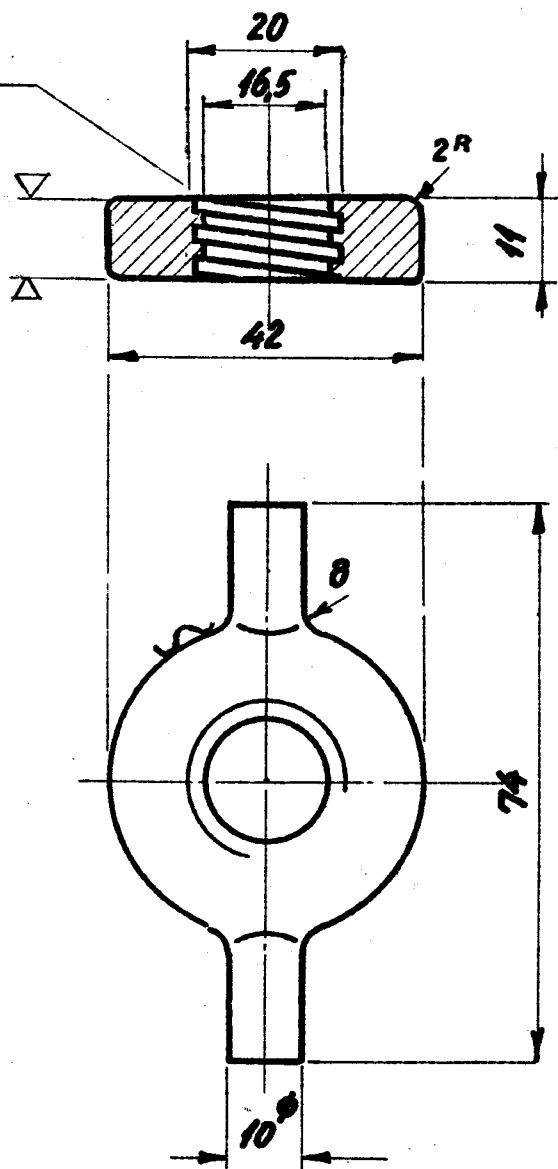
LON
D.S.B.

Kontramøtrik.

4.043-25

1946

6 Gev pr 1" eng.



Rekvisitionsbetegnelse

Materiale

Model Nr.

Mindstebeholdn

Kontramøtrik, LON. 4.043-25

Hanebronz

1440 yb

Kh. 10

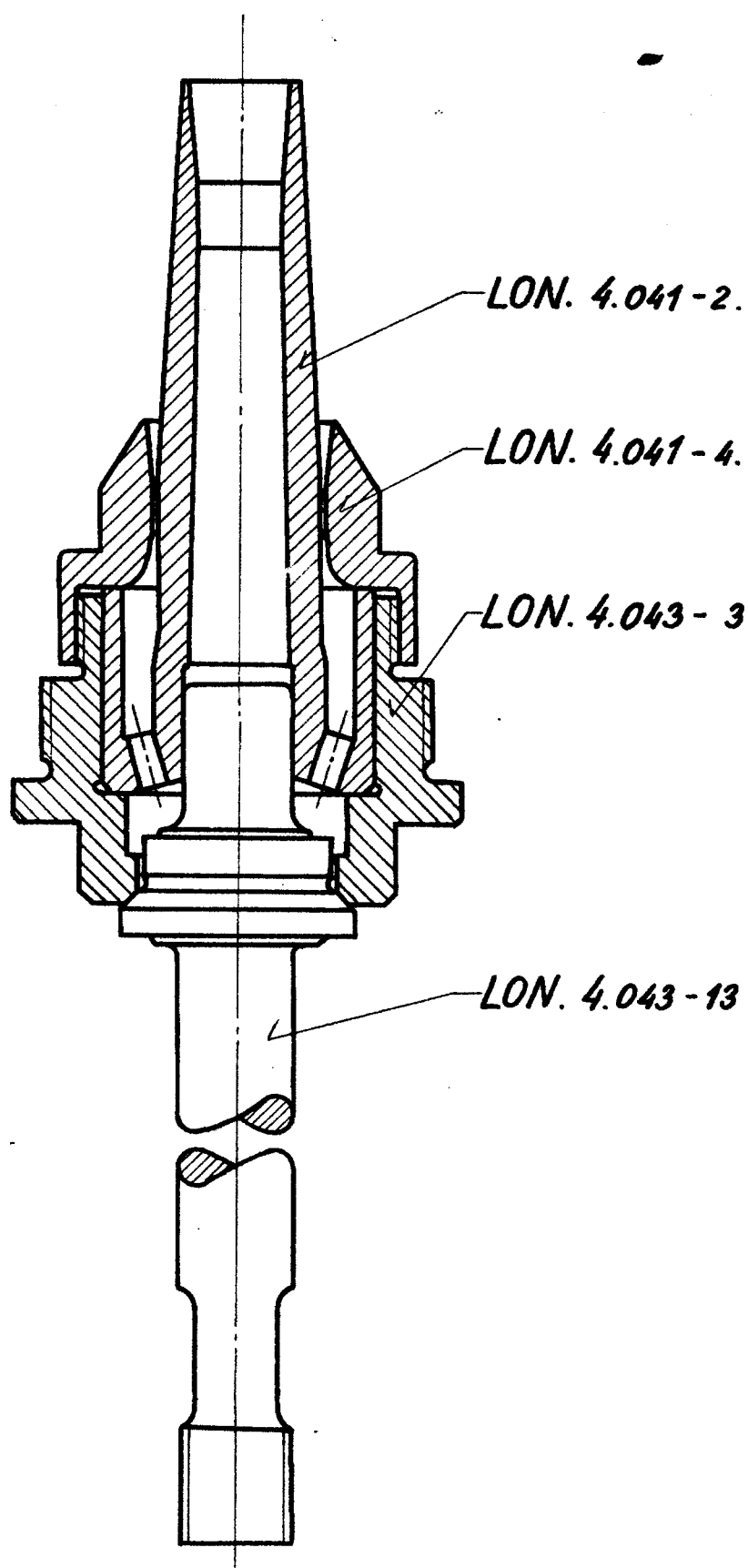
Ar. 0

01.

LON
D.S.B.Samlet Dampdyse
med Pinol.

4.043-26

1947



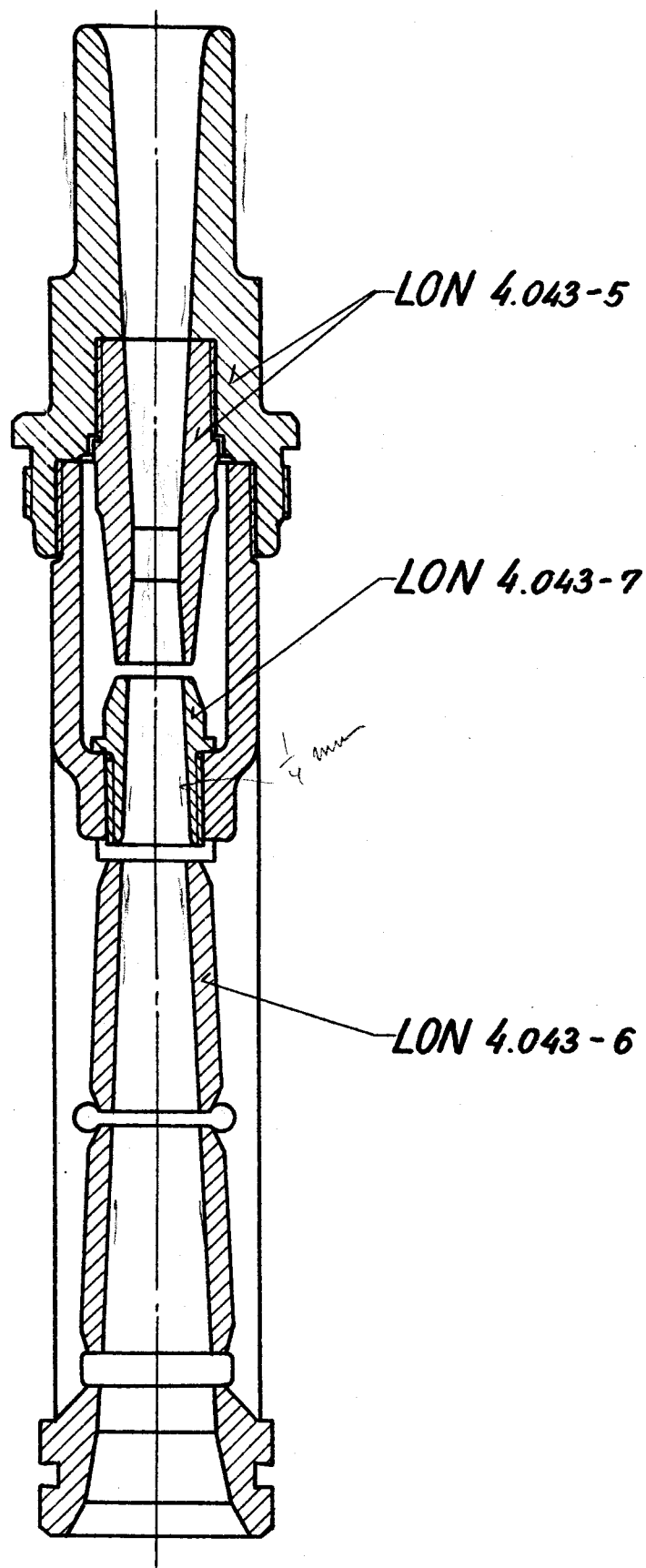
Rekvissionsbetegnelse	Materiale	Model Nr.	Mindstebehold.
Dampdyse LON 4.043-26.			Kh. 10 Ar. 25

0

LON.
D.S.B.Straalerør m. Mundstykke
og Forpart.

4.043-27.

1947



Rekviseptionsbetegnelse

Materiale

Model Nr.

Mindstebehold.

Straalerør LON 4.043-27

Kh: 10 Ar: 12