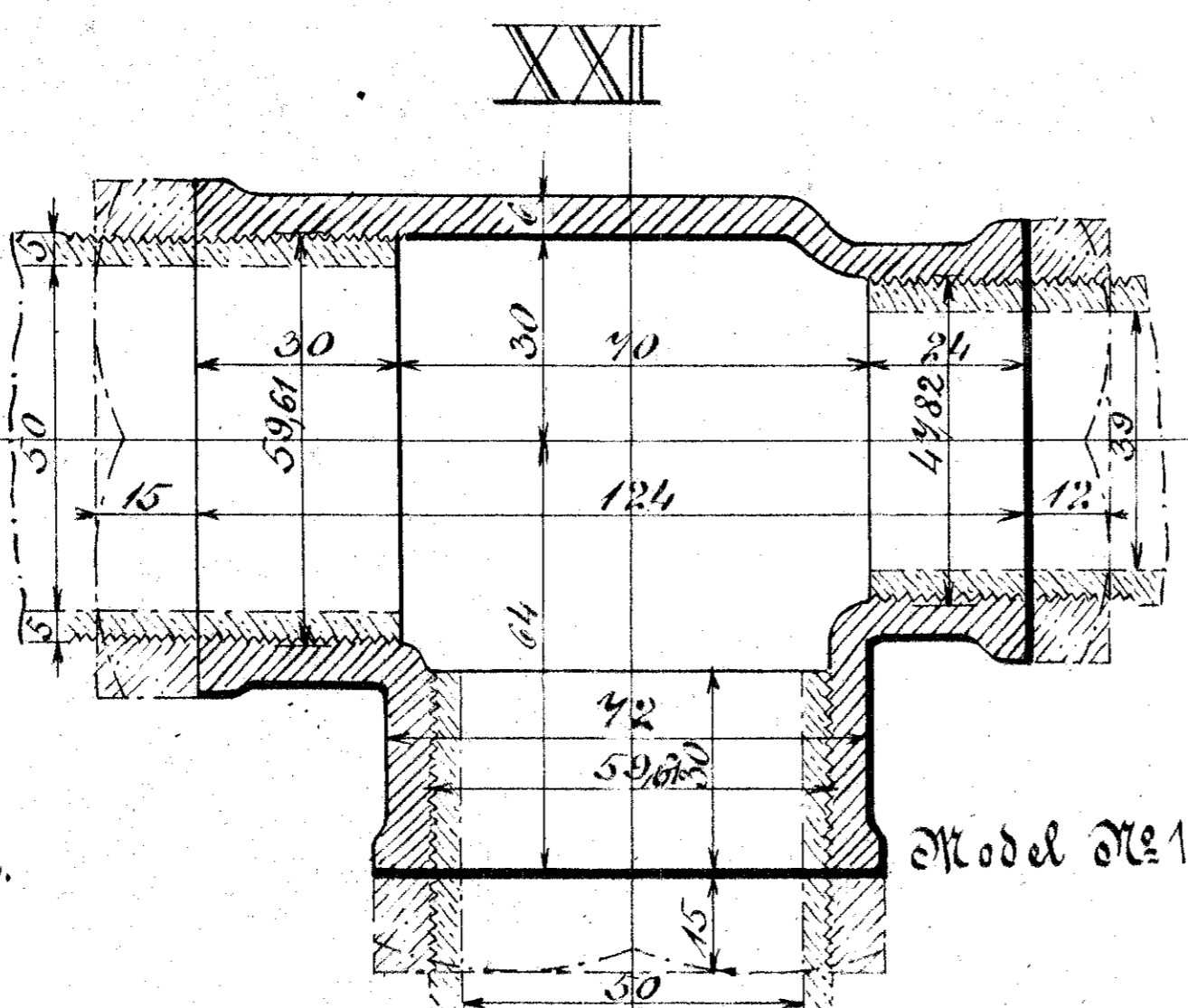
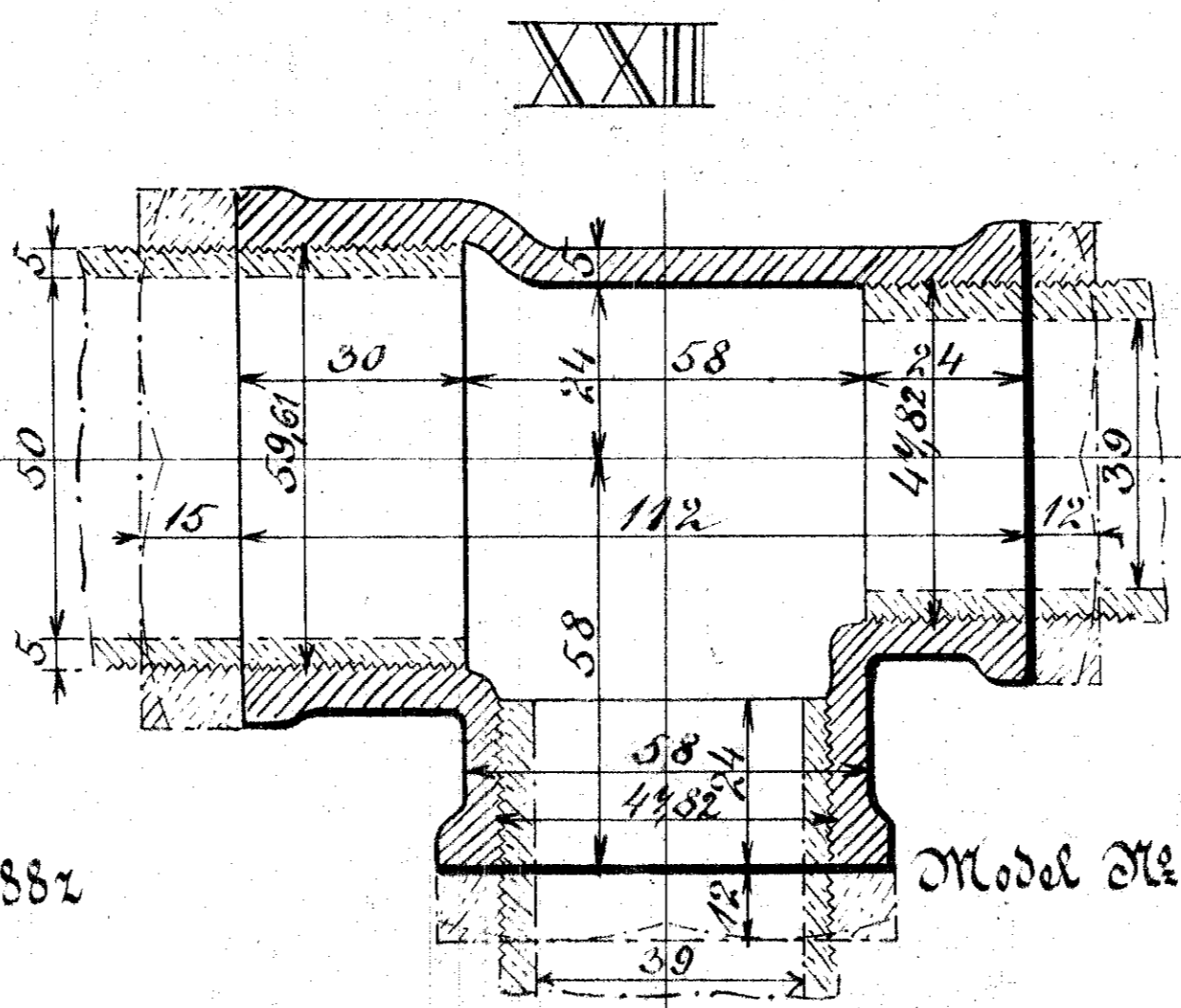


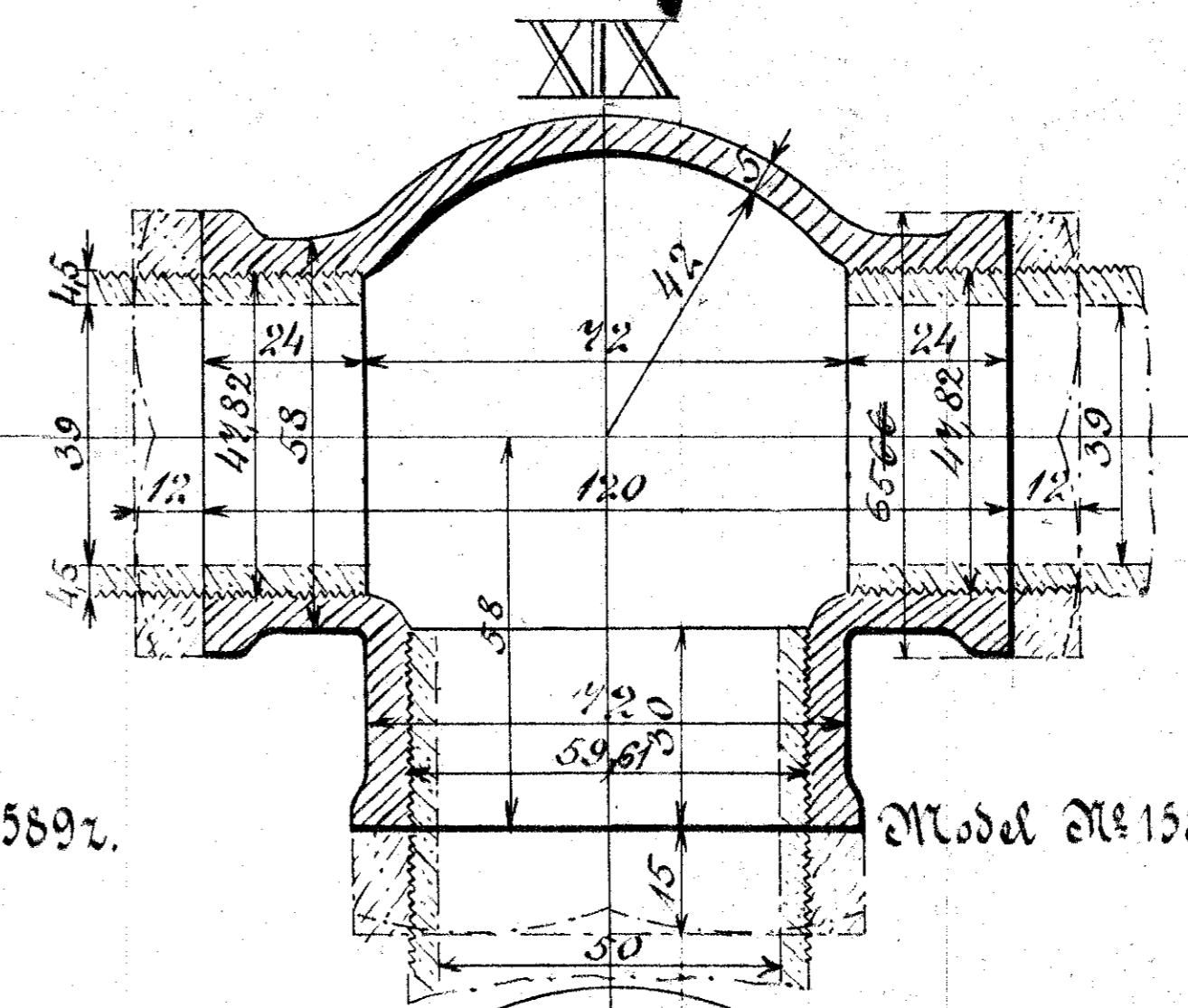
Model No. 1585z.



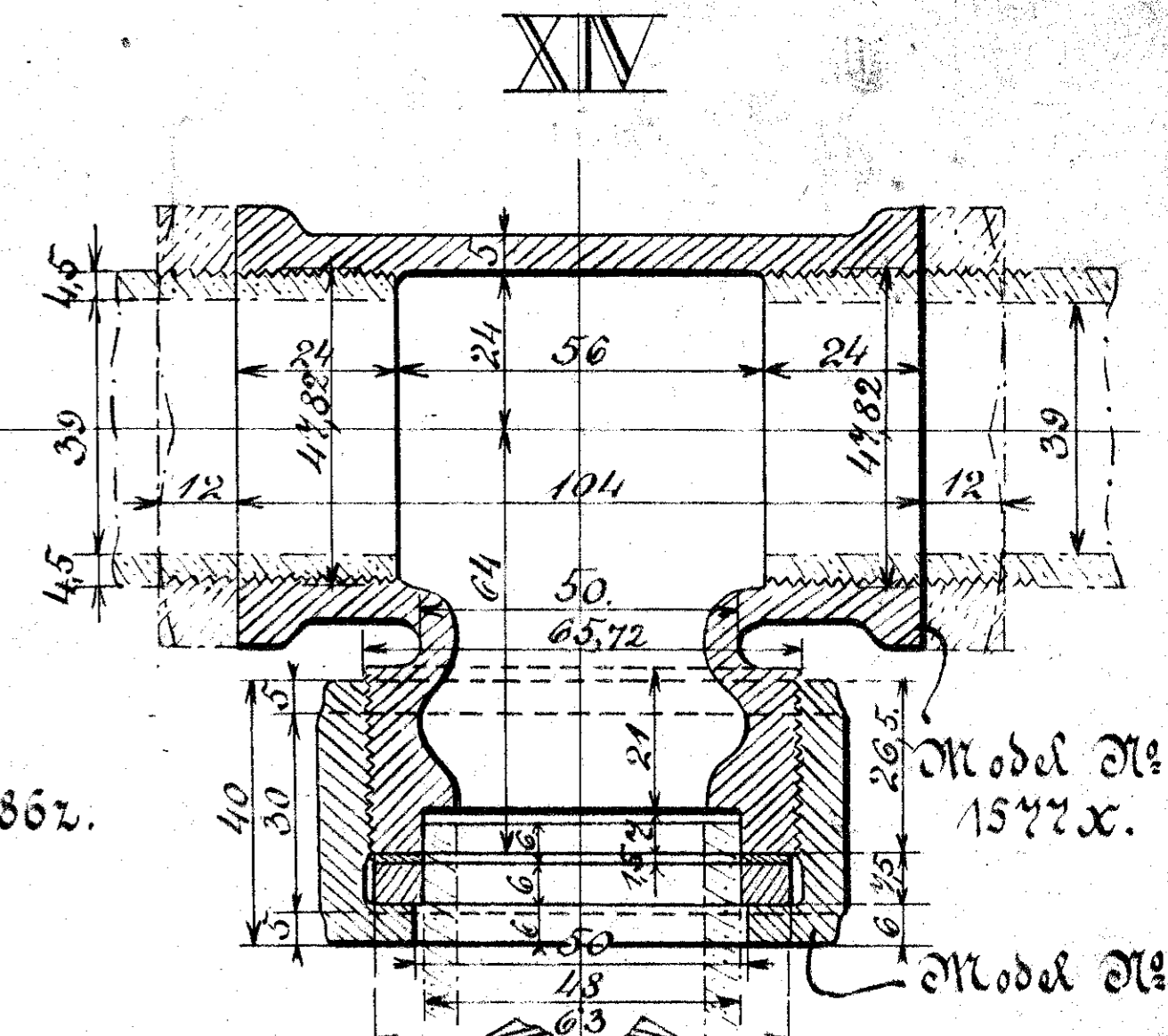
Model No. 1588z.



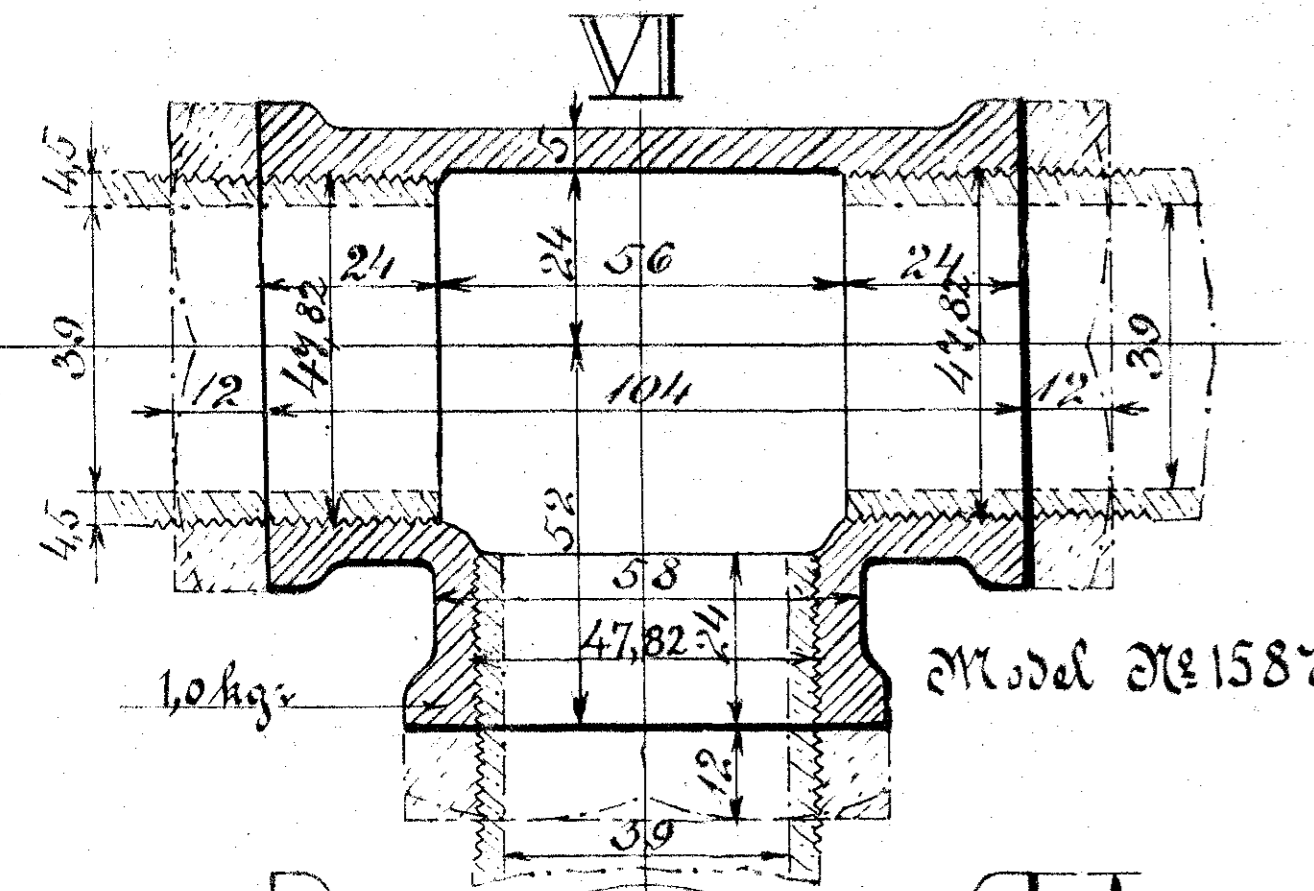
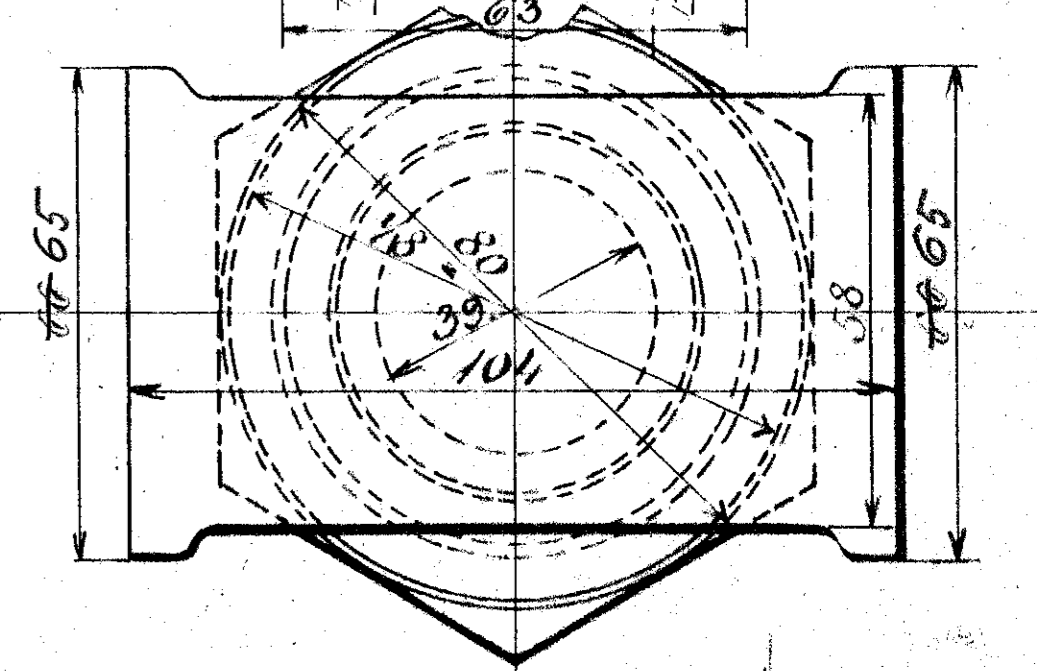
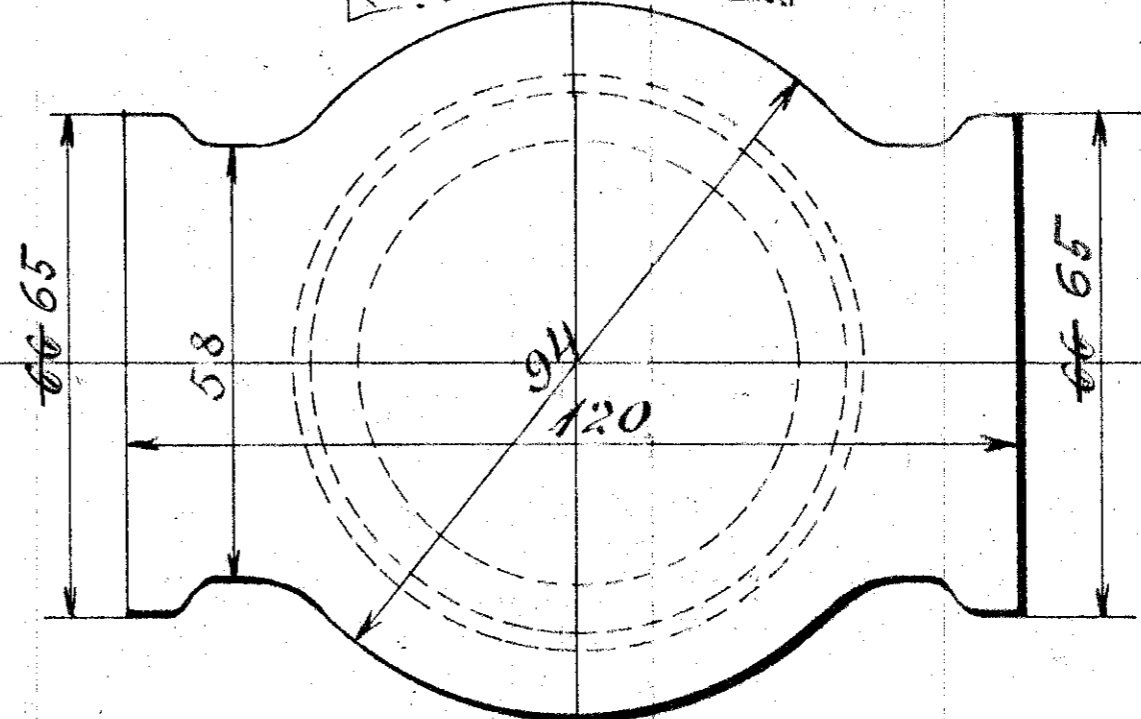
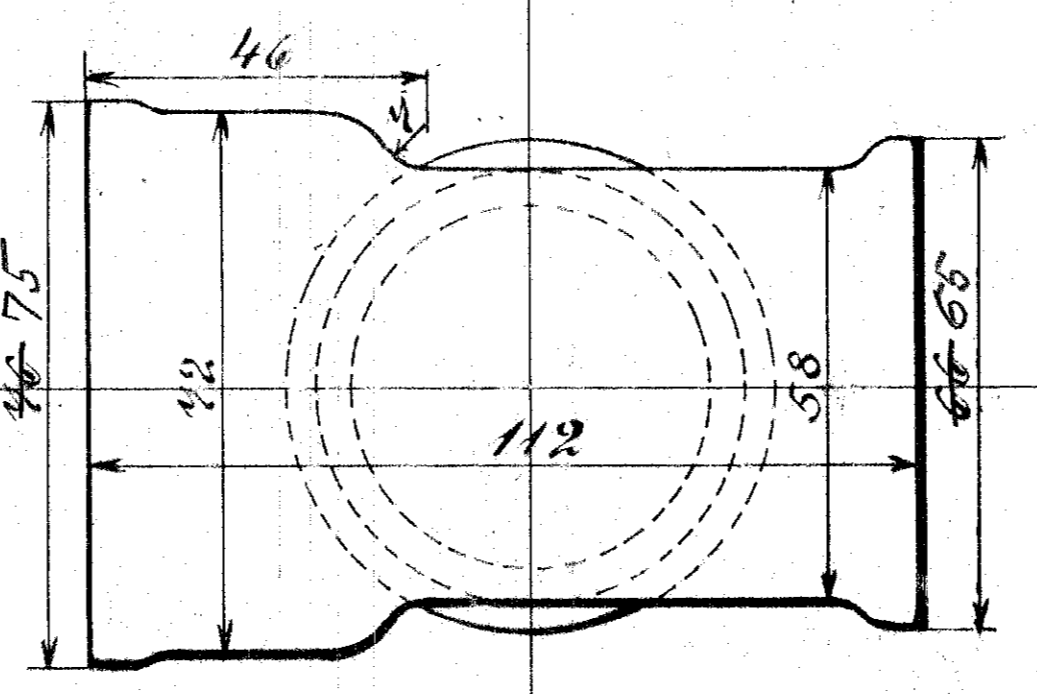
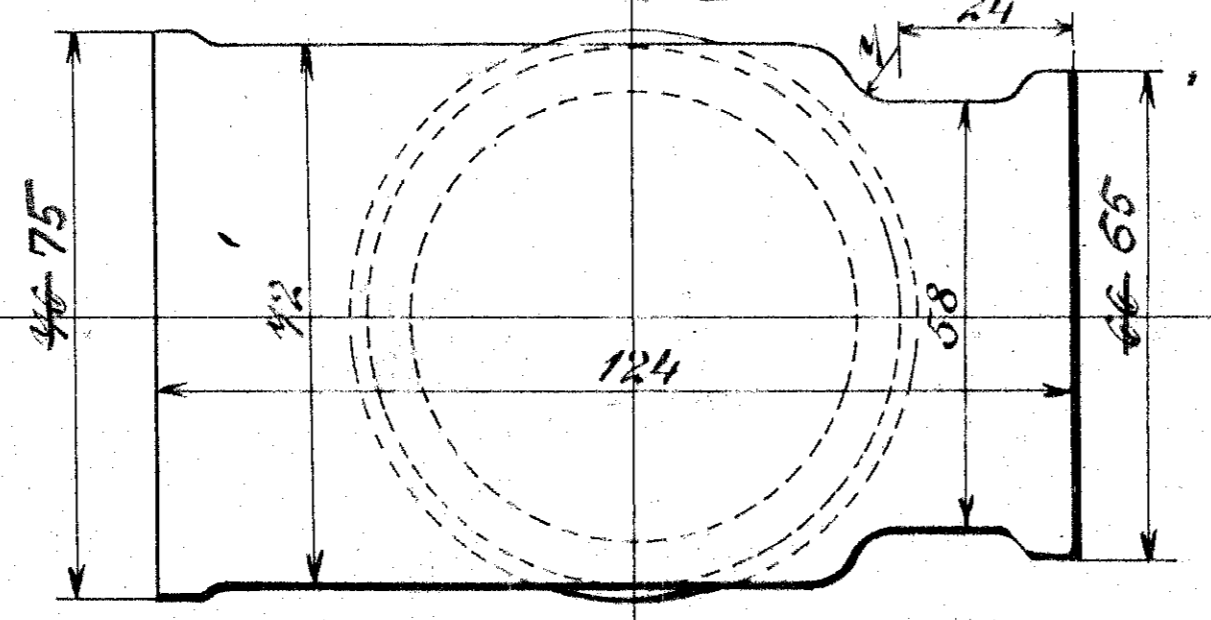
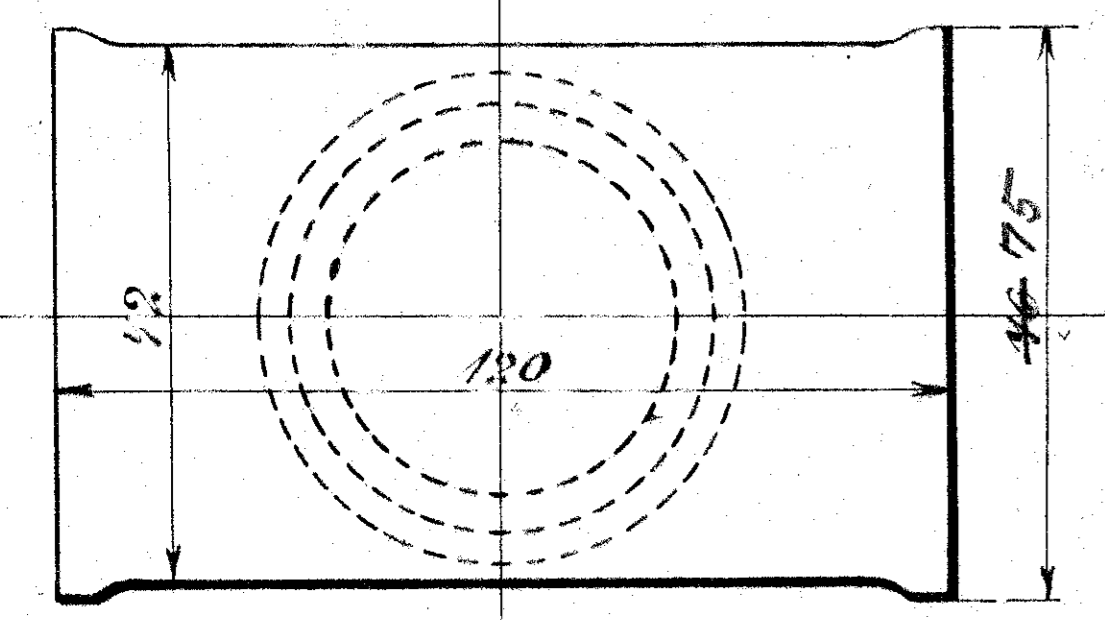
Model No. 1589z.



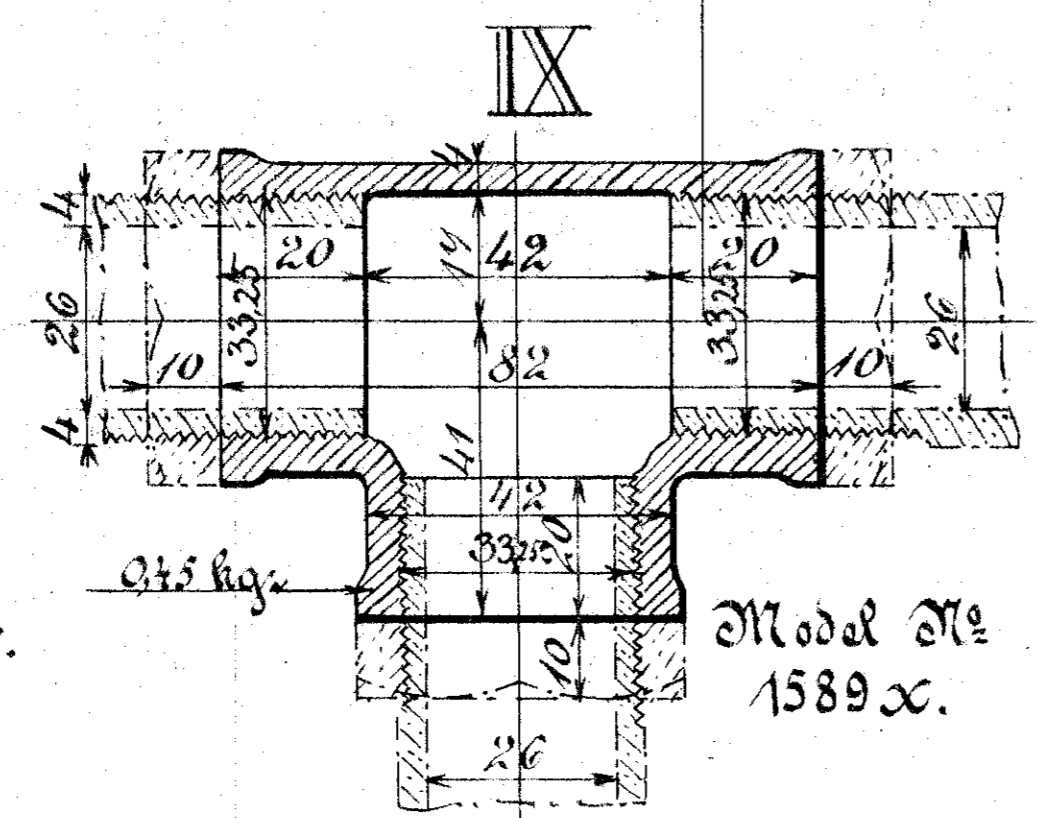
Model No. 1586z.



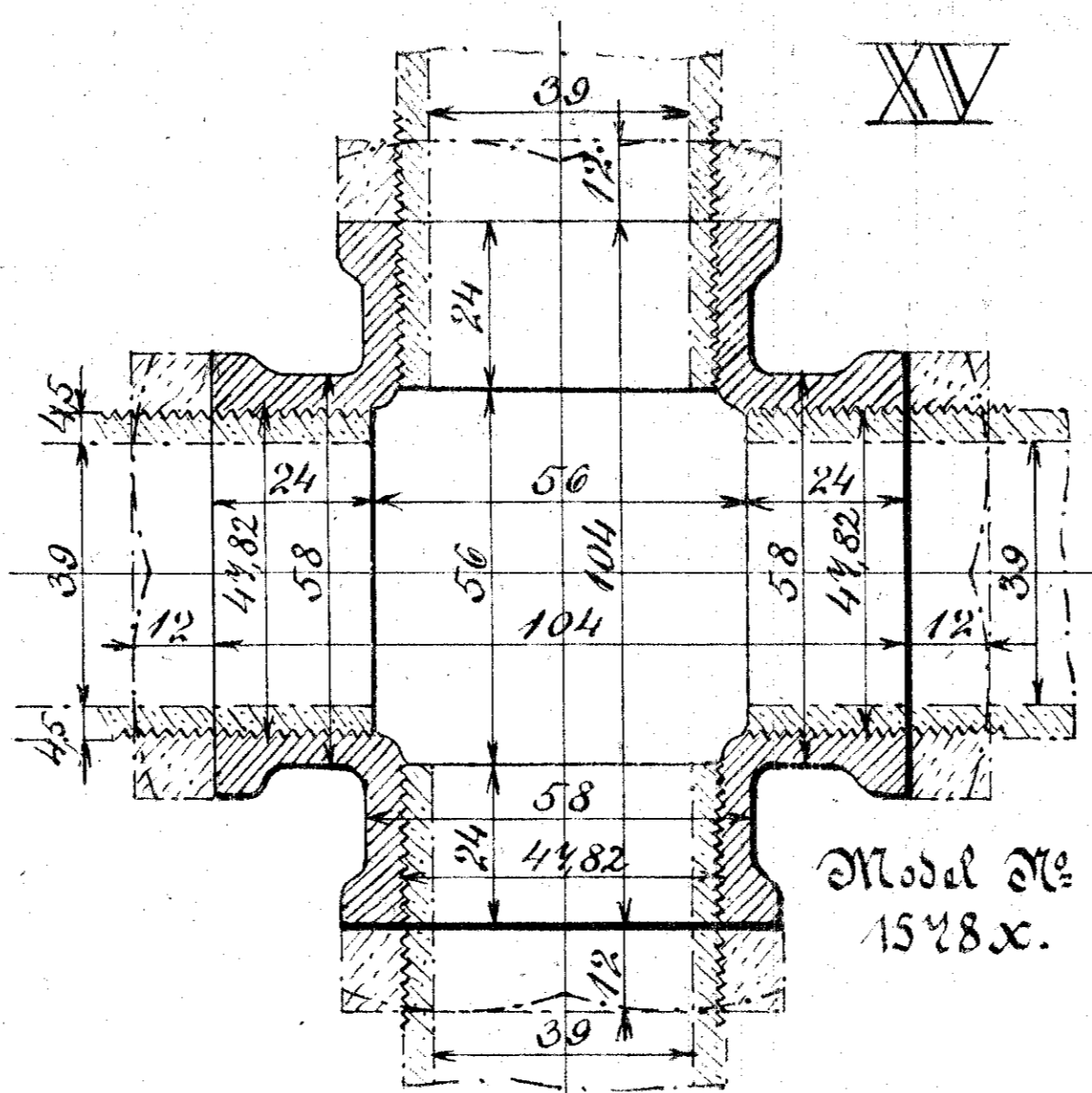
Model No. 1587x.
Model No.



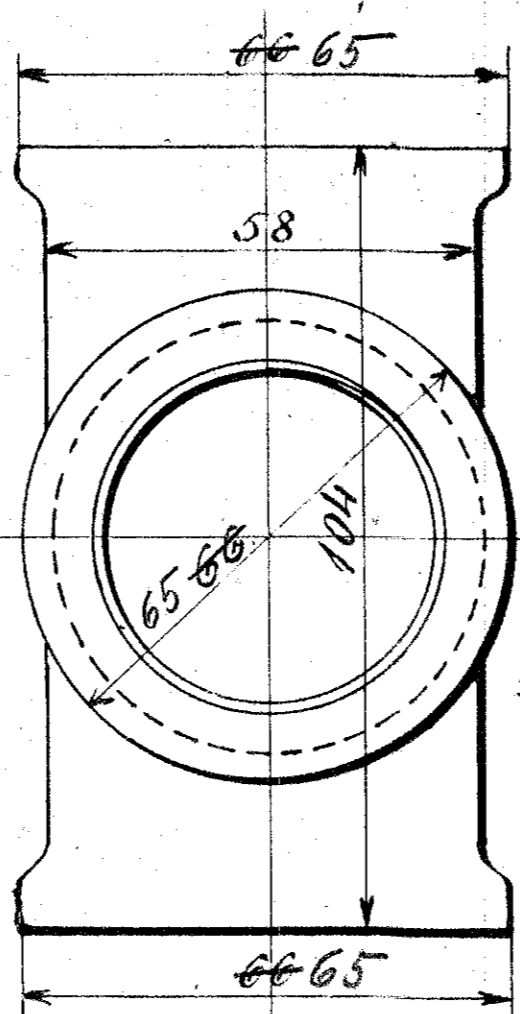
Model No. 1587x.



Model No. 1589x.

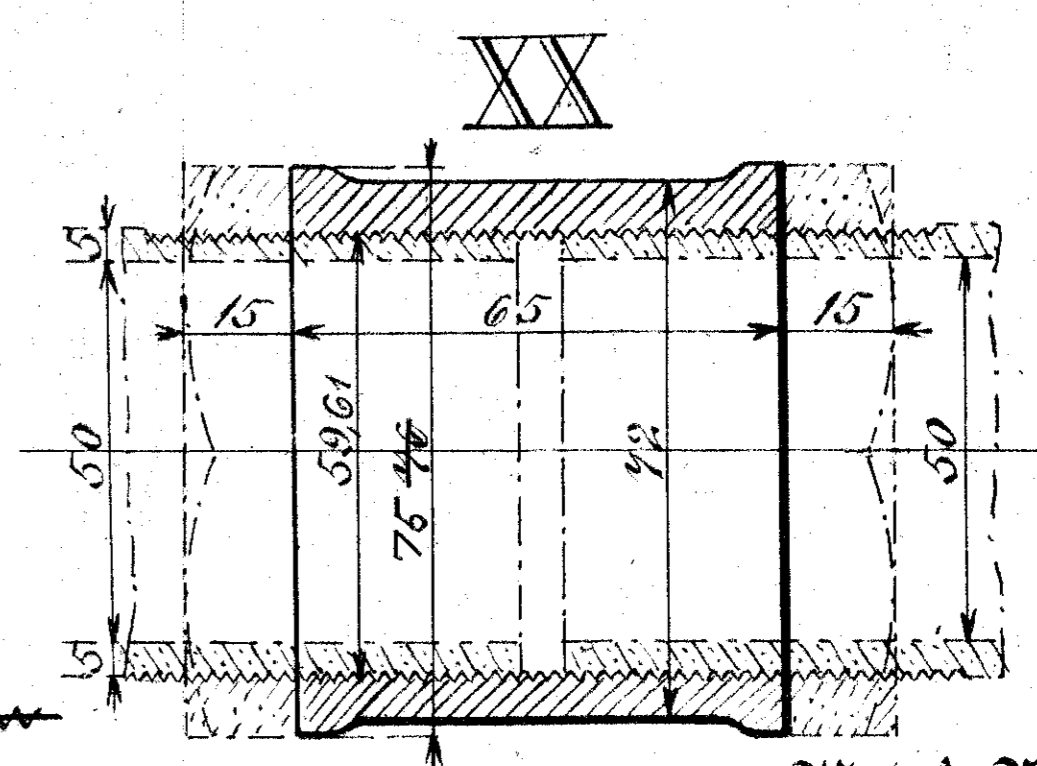


Model No. 1588x.

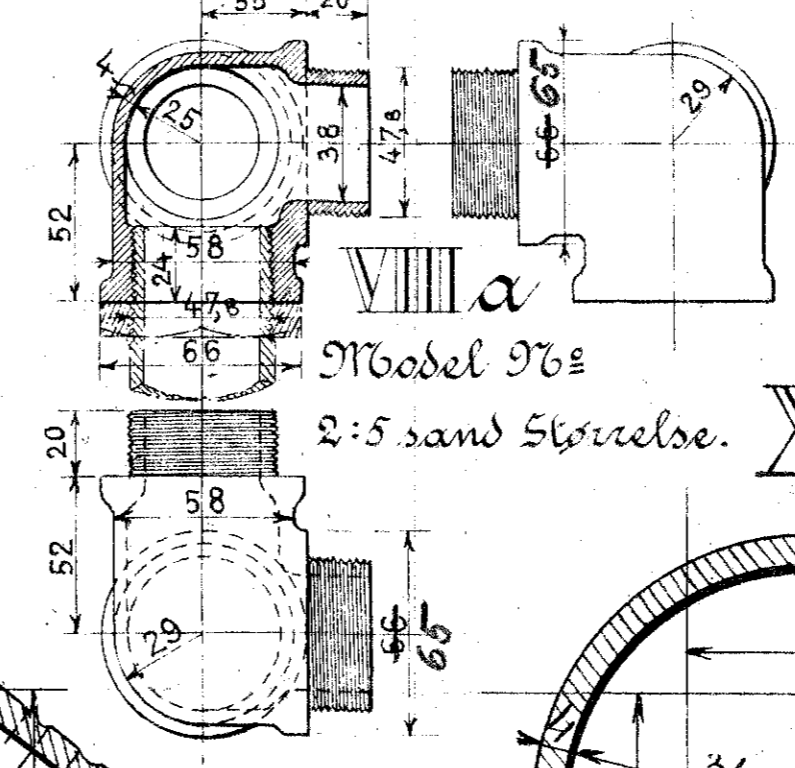
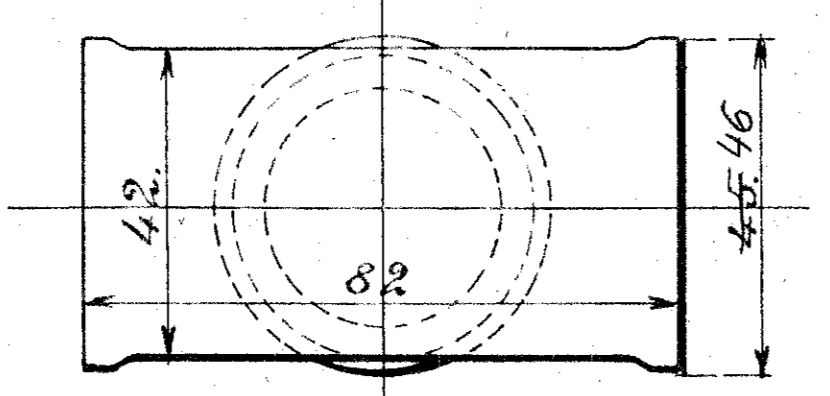
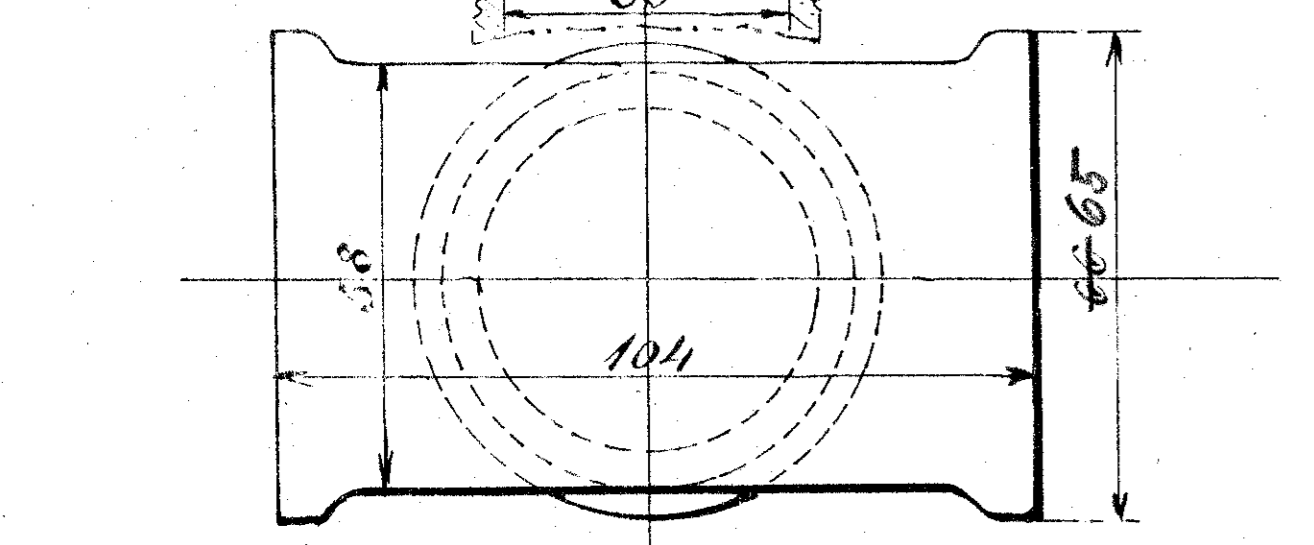
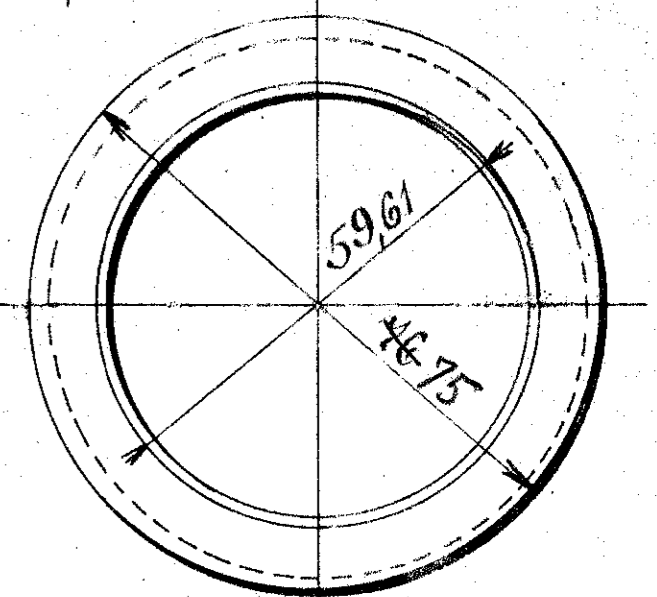


Alle Skærestykker
have 11 gevind
paa 1" engl.

Alle Stykker indtages
Ciffer VIII indføres af
kammerbart Skøbejern.

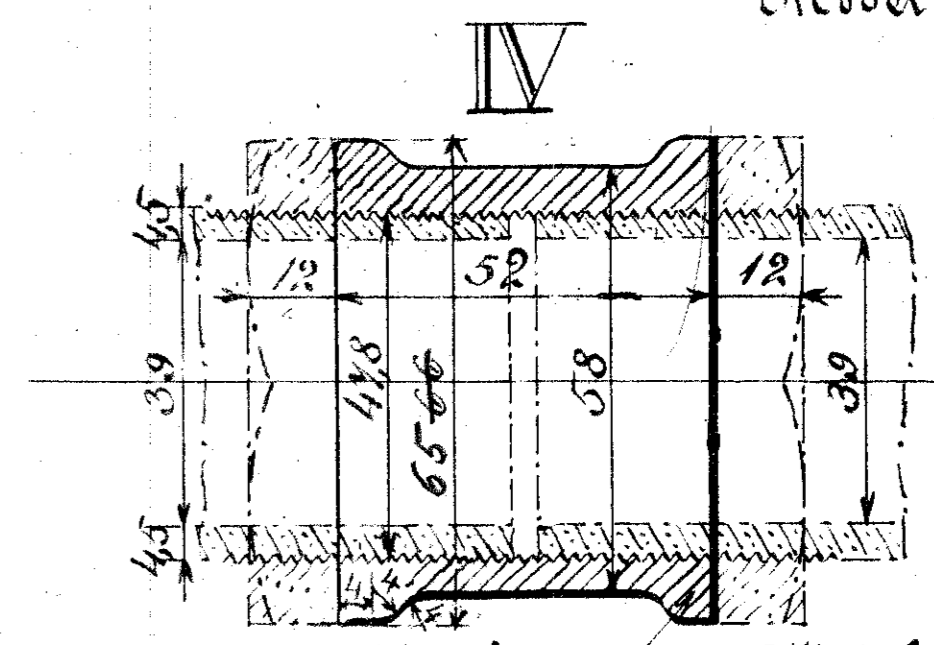


Model No. 1587z.

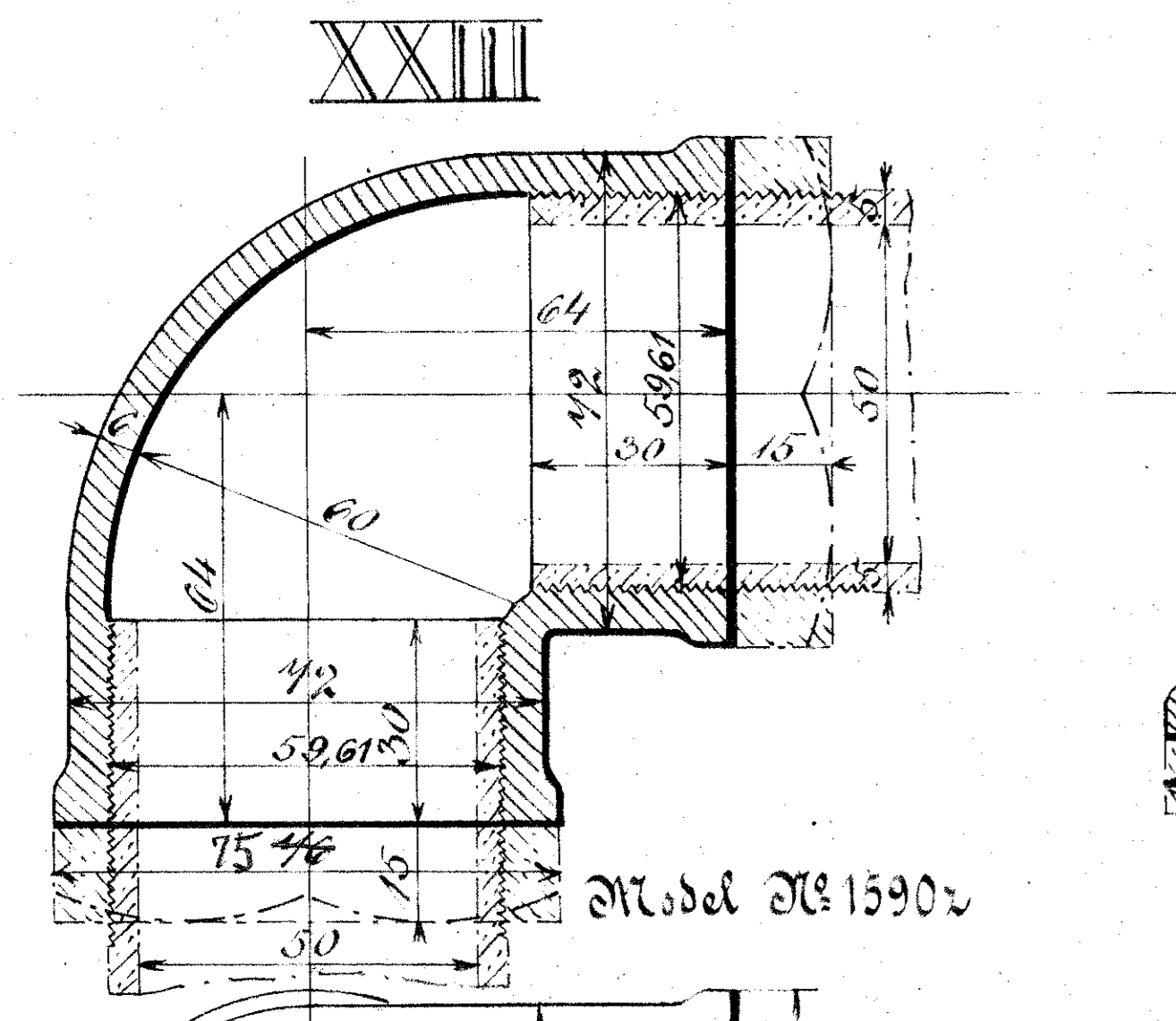
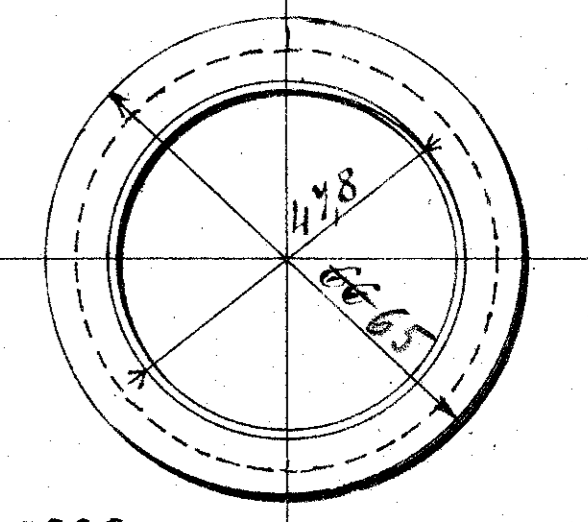


Model No. 97z.

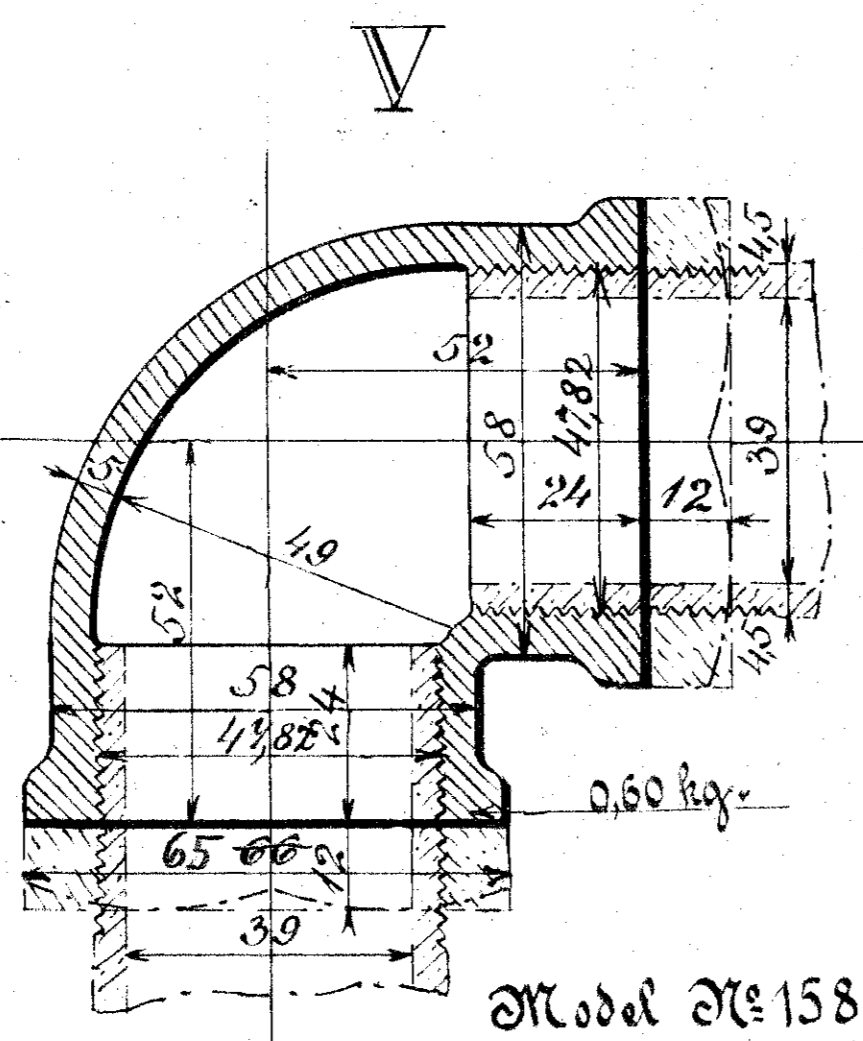
2:5 sand Skærelse.



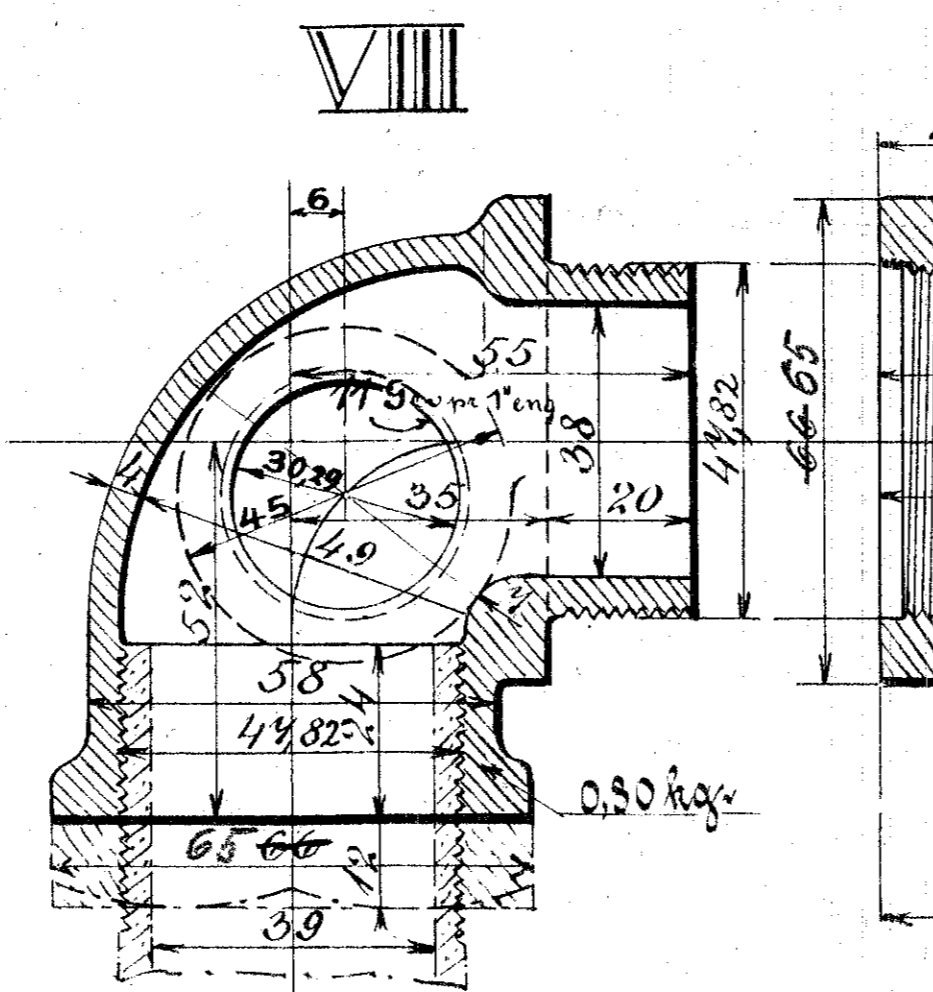
Model No. 1585x.



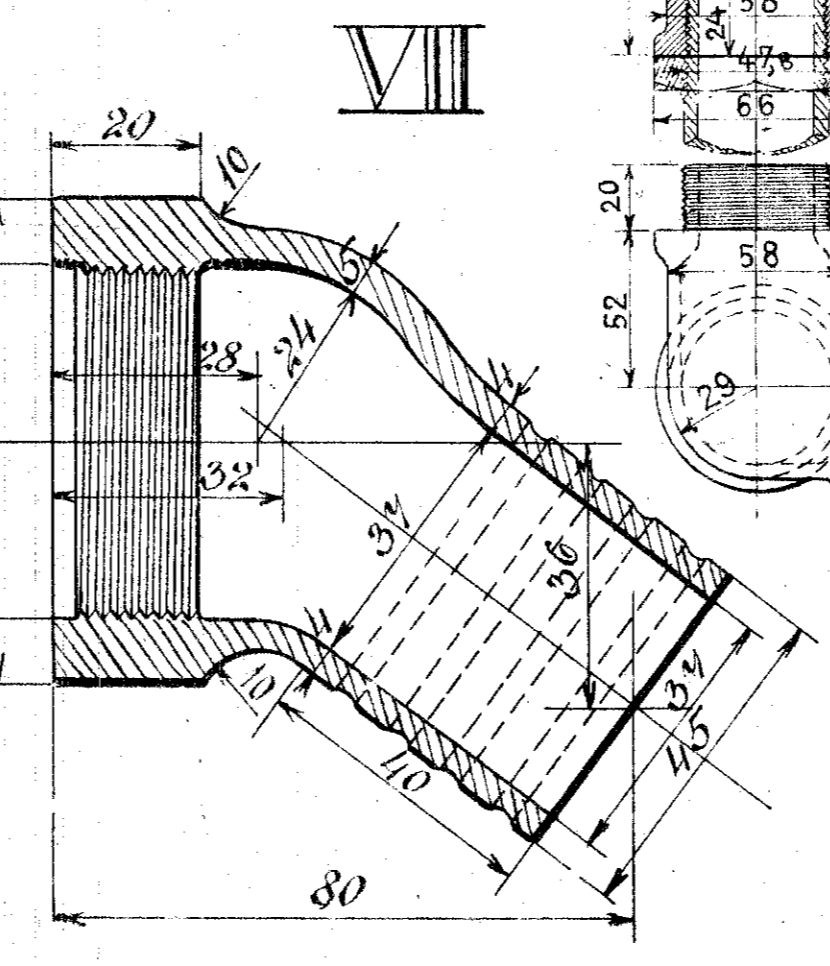
Model No. 1590z.



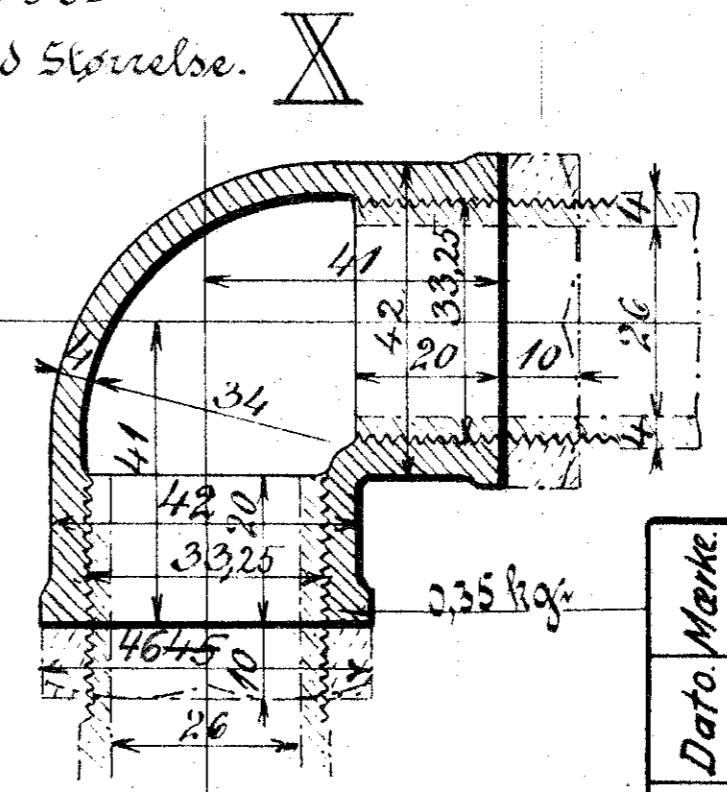
Model No. 1586x.



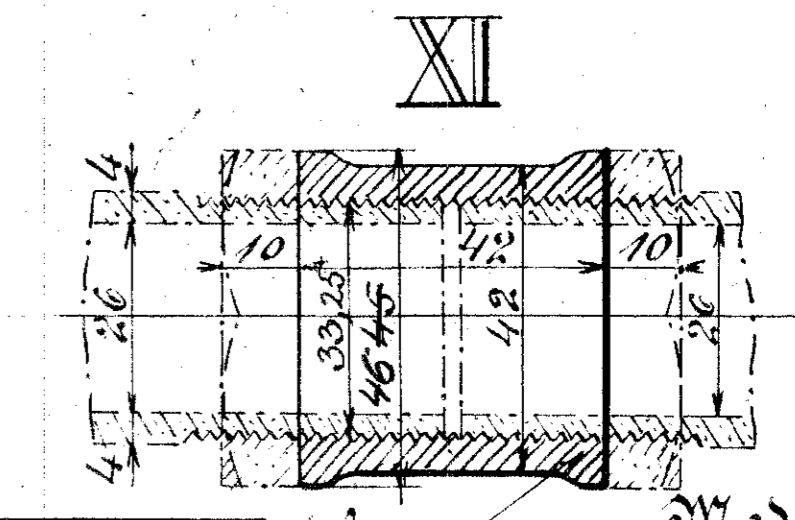
Model No. 1582z.



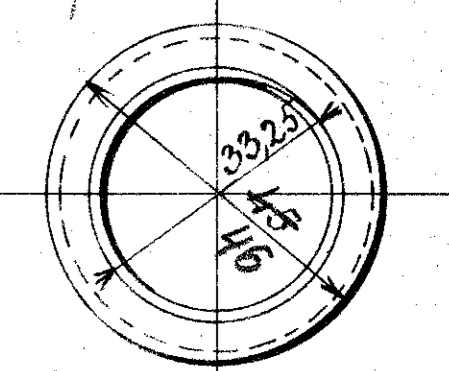
Model No. 1590x.



Model No. 1581y.



Model No. 1588x.



Danske Statsbaner-Maskinafdelingen

Samlingsstykker
til
Vakuümledning.

I

Kjøbenhavn Oktober 1896

Maschinechefen.

Dato	Medarbejder
28. 10.	E.P.P.
29. 10.	S.
31. 10.	S.

Forandringer.

Kraesterne paa VIII forandrede.

Medarbejder efter Dansk Standard

den 4. 10. 97. Zeman.

St. L. 8.